



Update from CDC: Health Care Provider Education

Temeika L. Fairley, PhD

Division of Cancer Prevention and Control

ACBCYW Meeting

September 13, 2024

The Breast Cancer Education and Awareness Requires Learning Young Act (EARLY Act)

Increase awareness of early-onset breast cancer (EOBC) risk: young women and HCPs

Advisory Committee on Breast Cancer in Young Women (ACBCYW)

Applied **public health research program** about breast cancer in young women

Grant program to support to young women living with breast cancer



ACBCYW Recommendations

Target audience of healthcare providers:

- Primary care physicians and other practicing providers
- Professional societies
- Health professions students (e.g., nursing/NP, physician assistant and medical schools, etc.)
- Healthcare plans
- Insurance providers



CHAIR

Ann H. Partridge, MD, MPH

MEMBERS

Raquel D. Arias, MD
Ulrike Boehmer, PhD
Otis W. Brawley, MD
Sue Friedman, DVM
Generosa Grana, MD
Susan E. Kutner, MD
Brandon Hayes-Lattin, MD
Karen Kelly Thomas, PhD, RN
Karen Meneses, PhD, RN
Lisa A. Newman, MD, MPH
Jeanne L. Steiner, DO
Donald Warne, MD, MPH

DESIGNATED FEDERAL OFFICIAL

Temeika L. Fairley, PhD

EX-OFFICIOS

Jennifer Crosswell MD, MPH
Susan Karol, MD
Jung-Min Lee, MD
Nancy L. Lee, MD
Morissa Rice, MHA
Gayle Vaday, PhD

LIASION REPRESENTATIVES

Lindsay Avner
Susan Brown, MS, RN
Shonta Chambers, MSW
Noreen Fraser
Arin Ahlum Hanson, MPH
Marc Hurlbert, PhD
Maimah Karmo
Ngina Lythcott, PhD
Devon McGoldrick, MPH
Jennifer Merschdorf, MBA
Rochelle L. Shoretz, JD
Marisa Weiss, MD

May 20, 2015

The Honorable Sylvia M. Burwell
Secretary
U.S Department of Health and Human Services
200 Independence Avenue, SW
Washington, DC 20201

Dear Madam Secretary:

I am writing on behalf of the Centers for Disease Control and Prevention (CDC) Advisory Committee on Breast Cancer in Young Women (ACBCYW). As you know, the ACBCYW was established pursuant to Section 10413, Part V of the Patient Protection and Affordable Care Act (which established Section 399NN of the Public Health Service Act, as amended); Public Law 111-148. The ACBCYW recommends several initiatives in an effort to improve awareness, early detection, prevention, and care for the general population of young women in the United States.

Breast cancer in young women is a complex public health problem and several relevant features warrant attention. First, although the diagnosis of this disease in women under 45 years of age is not common, breast cancers are detected in more than 24,000 young women annually. Furthermore, the total number of women aged 20-45 years has grown by approximately ten million over the past three decades, and we are therefore seeing an increasing volume of women in this age range diagnosed with breast cancer. Historically, we have seen that younger breast cancer patients experienced worse survival rates compared to older patients but advances in treatment have reduced these differences. Unfortunately however, recent and alarming data suggest that the proportion of young women diagnosed with metastatic breast cancer is increasing. Lastly, the breast cancer burden of young women is also associated with race/ethnicity-specific susceptibility, with African American women more likely to be diagnosed with breast cancer at young ages compared to White American/Caucasian women, and African American women with breast cancer at any age have higher mortality risk compared to Caucasian women in the United States.

The Advisory Committee on Breast Cancer in Young Women provides advice and guidance to the Secretary, HHS, the Assistant Secretary for Health, and the Director, CDC regarding the formative research, development, implementation and evaluation of evidence-based activities designed to prevent breast cancer (particularly among those at heightened risk) and promote the early detection and support to young women who develop the disease.

ACBCYW Recommendations...

- The following strategies should be considered to reach healthcare providers:
 - Training programs and online education
 - Media outreach: newsletters, email blasts, social networks that connect patients with providers
 - Organization meetings and conferences for providers
 - Licensing boards and accrediting bodies
 - Integration into curricula of students in health professional schools
 - Insurance providers
 - Health plan medical directors and national partners (e.g., Aetna, United Health and Cigna)
 - EMR innovations at point-of-care

Multiple Approaches to Support YBCS and MBC Patients: Health Care Provider Training Opportunities

- 92 health care provider training and educational opportunities
 - These training and educational opportunities were attended live by nearly 4,000 individuals, and recordings were viewed by more than 2,000 individuals.



Multiple Approaches to Support YBCS and MBC Patients: Health Care Provider Training Topics



Multiple Approaches to Support YBCS and MBC Patients: Health Care Provider Training Opportunities



The screenshot shows the Sharsheret website header with the logo and tagline "We stand with Israel." and navigation links for BRCA/GENETICS, BREAST CANCER, OVARIAN CANCER, and GET INVOLVED. The main heading is "Cultural Competency Training". The text below describes training opportunities for health care providers, including doctors, nurses, social workers, genetic counselors, and patient navigators. It states that trainings are free and can be presented in-person or online. CE credits are available through ACCME, ANCC, ASWB, and NYSW. The flagship training is *The Impact of Culturally Competent Cancer Care*.

SHARSHERET
We stand with Israel.

BRCA/GENETICS BREAST CANCER OVARIAN CANCER GET INVOLVED

Cultural Competency Training

Sharsheret is pleased to provide multiple training opportunities for health care providers, including doctors, nurses, social workers, genetic counselors, patient navigators and more.

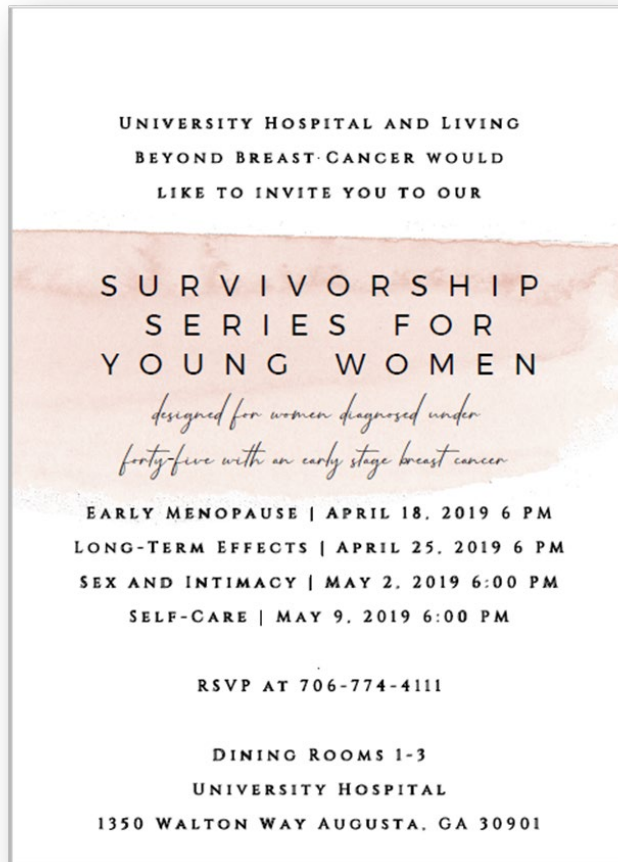
The trainings are free and can be presented in-person or over an online portal.

CE credits may be available through ACCME, ANCC, ASWB, and NYSW.

Sharsheret's flagship training is *The Impact of Culturally Competent Cancer Care*, described below. Scroll further down for additional training opportunities.

Sharsheret presented **10 cultural competency trainings for health care facilities and programs to train health care providers, including genetic counseling students and social workers**, on the unique issues that affect Jewish women facing breast cancer and the effect of culturally competent cancer care for all.

Multiple Approaches to Support YBCS and MBC Patients: Health Care Provider Training Topics



Living Beyond Breast Cancer: Survivorship Series

- Training program for oncology nurse navigators to provide in-person survivor support for young women diagnosed with breast cancer

Health Care Provider Training

- **2017 Medscape 1-credit CME course (2017, 2020)**
 - About 15,000 learners
 - More than 7,000 test takers
 - More than 7,000 CME certificates issued
 - About 11,000 CME credits earned
 - Reached mostly nurses (2017)
 - 2020 1-credit CME targeted HCPs
 - Positive feedback from those who completed the CME training



Health Care Provider Training: National Association of Chronic Disease Directors and Family Medicine Education Consortium



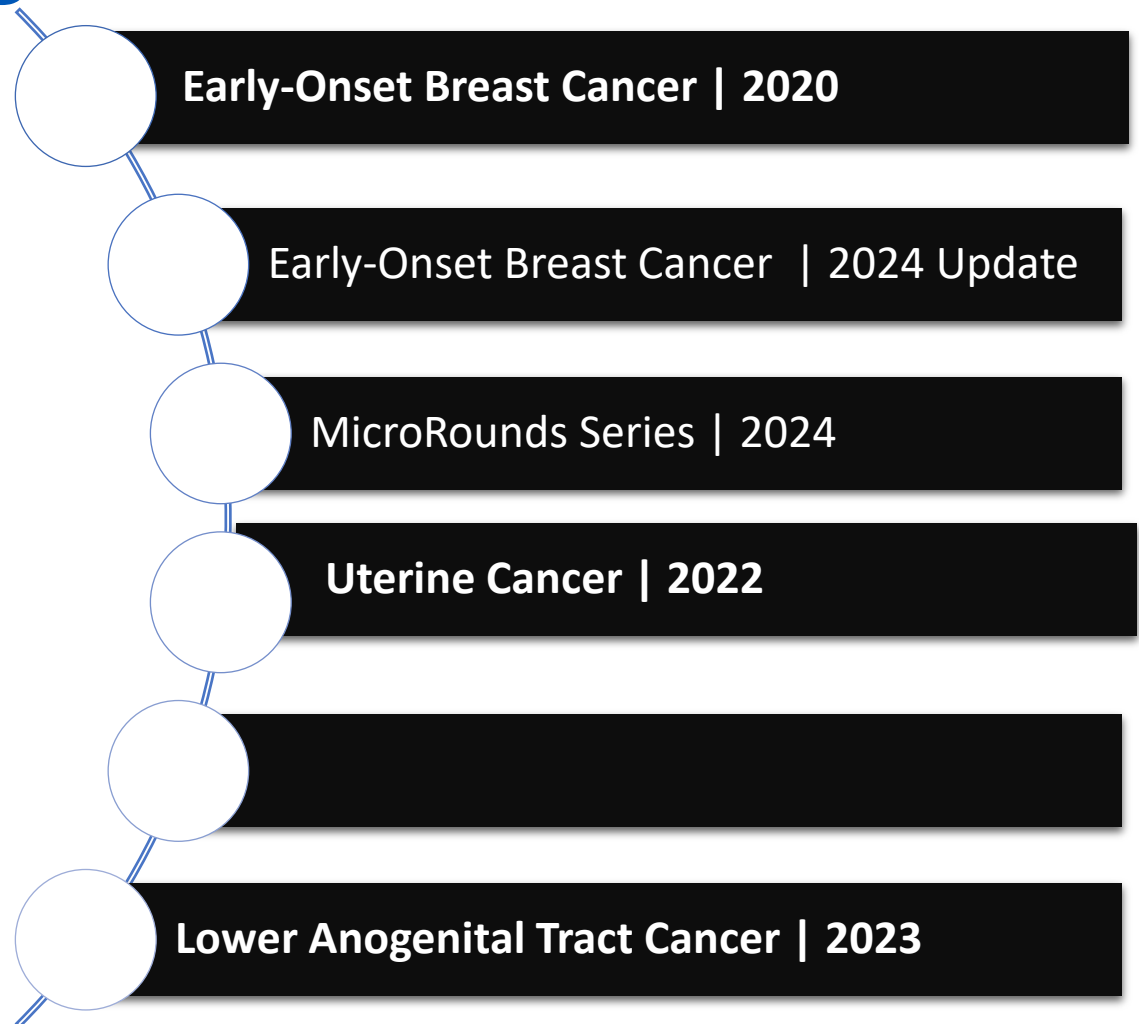
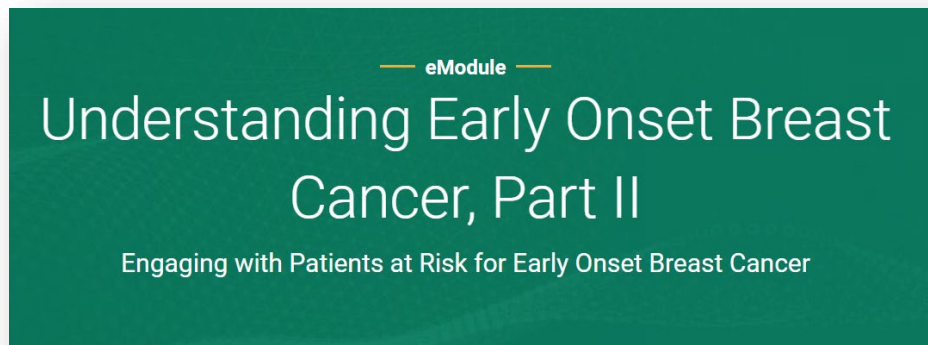
CME Modules (0.25 units):

- Narrative Practice/Medicine Background and Use in Family Medicine
- Narrative Practice/Medicine as a Tool to Support Patients with Hereditary Cancer Risk
- Setting up the Family Practice for HBC Risk Assessment, Testing and Counseling (Part A and Part B)
- Working with Genetic Counselors
- Common Patient Questions about Insurance, Privacy, and Disclosure
- Hereditary Breast Cancer Discussions with Family Members

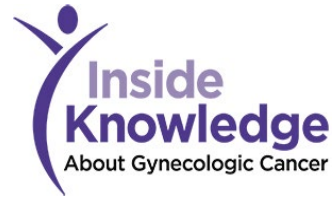
Purpose: Improve family medicine health care providers' skills and confidence in managing patients who may have a higher risk of hereditary cancer due to genetic factors. Uses *Bring Your Brave* resources for training purposes.

Health Care Provider Training: American College of Obstetricians and Gynecologists

- Series of free, CME-accredited online courses available on www.acog.org.
- Journal articles published in *Obstetrics & Gynecology*.



Stakeholder Organizations



ACOG



BLACK WOMEN'S
HEALTH IMPERATIVE



NACCHO
National Association of County & City Health Officials



NATIONAL ASSOCIATION OF
Community Health Centers®

National Society of
Genetic
Counselors



NMA
National
Medical
Association
Since 1895



NPWH
NURSE PRACTITIONERS
IN WOMEN'S HEALTH
Caring for Women



AAFP



prevent
cancer®
FOUNDATION



APIAHF
ASIAN & PACIFIC ISLANDER
AMERICAN HEALTH FORUM



ACMG



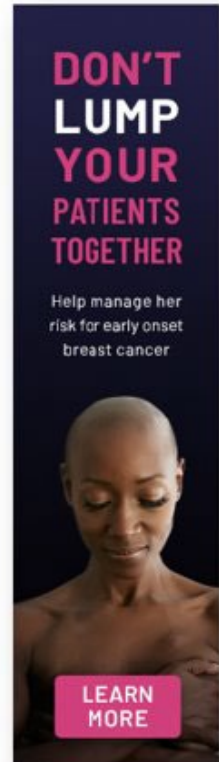
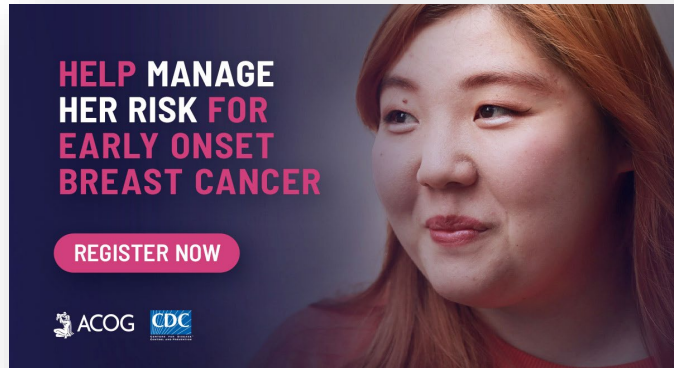
ASCO®

National
LGBT
Cancer
Network

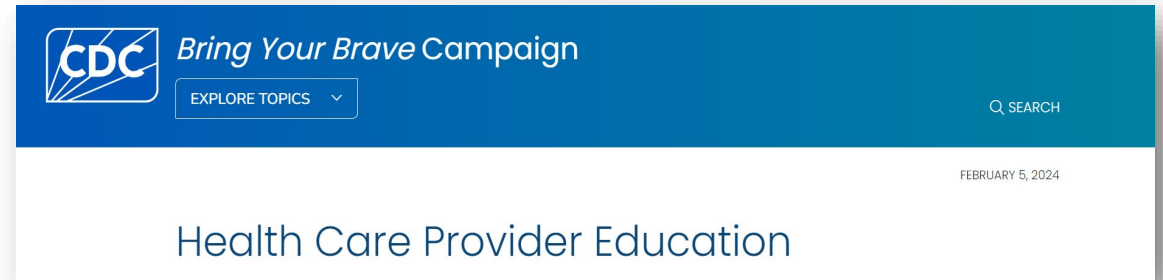


Hispanic Health Council
Health. Hope. Community.

Outreach and Dissemination



Social Media & Paid Ads



Exhibits, Presentations, and Digital Sponsorships

Program Metrics

	<u>Early-Onset Breast Cancer</u> <u>(Parts 1 and 2)</u>	<u>Uterine Cancer</u>	<u>Ovarian</u> <u>Cancer</u>	<u>Lower</u> <u>Anogenital</u> <u>Tract Cancer</u>
Registrations	5,087	1,785	1,028	349
Course Completions	4,271	1,030	684	335
CME Credits Awarded	21,357	2,814	3,619	1,540
Nursing CEU Credits Awarded	1,477	2,296	1,092	497

What's *next*?



ACBCYW Recommendations

- Target audience of healthcare providers:
 - Health professions students
 - Healthcare plans
 - Provider insurance
- Primary care physicians and other practicing providers
- Professional societies



CHAIR
Ann H. Partridge, MD, MPH

MEMBERS
Raquel D. Arias, MD
Ulrike Boehmer, PhD
Otis W. Brawley, MD
Sue Friedman, DVM
Generosa Grana, MD
Susan E. Kutner, MD
Brandon Hayes-Lattin, MD
Karen Kelly Thomas, PhD, RN
Karen Meneses, PhD, RN
Lisa A. Newman, MD, MPH
Jeanne L. Steiner, DO
Donald Warne, MD, MPH

DESIGNATED FEDERAL OFFICIAL
Temeika L. Fairley, PhD

EX-OFFICIOS
Jennifer Crowell MD, MPH
Susan Karol, MD
Jung-Min Lee, MD
Nancy L. Lee, MD
Morissa Rice, MHA
Gayle Vaday, PhD

LIASION REPRESENTATIVES
Lindsay Avner
Susan Brown, MS, RN
Shonta Chambers, MSW
Noreen Fraser
Arin Ahlum Hanson, MPH
Marc Hurlbert, PhD
Maimah Karmo
Njima Lythcott, PhD
Devon McGoldrick, MPH
Jennifer Merschdorf, MBA
Rochelle L. Shoretz, JD
Marisa Weiss, MD

May 20, 2015

The Honorable Sylvia M. Burwell
Secretary
U.S. Department of Health and Human Services
200 Independence Avenue, SW
Washington, DC 20201

Dear Madam Secretary:

I am writing on behalf of the Centers for Disease Control and Prevention (CDC) Advisory Committee on Breast Cancer in Young Women (ACBCYW). As you know, the ACBCYW was established pursuant to Section 10413, Part V of the Patient Protection and Affordable Care Act (which established Section 399NN of the Public Health Service Act, as amended); Public Law 111-148. The ACBCYW recommends several initiatives in an effort to improve awareness, early detection, prevention, and care for the general population of young women in the United States.

Breast cancer in young women is a complex public health problem and several relevant features warrant attention. First, although the diagnosis of this disease in women under 45 years of age is not common, breast cancers are detected in more than 24,000 young women annually. Furthermore, the total number of women aged 20-45 years has grown by approximately ten million over the past three decades, and we are therefore seeing an increasing volume of women in this age range diagnosed with breast cancer. Historically, we have seen that younger breast cancer patients experienced worse survival rates compared to older patients but advances in treatment have reduced these differences. Unfortunately however, recent and alarming data suggest that the proportion of young women diagnosed with metastatic breast cancer is increasing. Lastly, the breast cancer burden of young women is also associated with race/ethnicity-specific susceptibility, with African American women more likely to be diagnosed with breast cancer at young ages compared to White American/Caucasian women, and African American women with breast cancer at any age have higher mortality risk compared to Caucasian women in the United States.

The Advisory Committee on Breast Cancer in Young Women provides advice and guidance to the Secretary, HHS, the Assistant Secretary for Health, and the Director, CDC regarding the formative research, development, implementation and evaluation of evidence-based activities designed to prevent breast cancer (particularly among those at heightened risk) and promote the early detection and support to young women who develop the disease.

ACBCYW Recommendations...

Systems??

The following strategies should be considered to reach healthcare providers

- Licensing boards and accrediting bodies
- Integration into curricula of students in health professional schools
- Provider Insurance
- Health Plan Medical Directors & National partners (e.g., Aetna, United Health and Cigna)
- EMR innovations at point-of-care
- ~~• Training programs & Online education~~
- ~~• Media outreach: Newsletters, E-mail blasts, Social networks that connect patients with providers~~
- ~~• Organizations meetings and conferences for providers~~

Thank You!

1-800-CDC-INFO (232-4636)

TTY: 1-888-232-6348

Follow us on X (Twitter) @CDC_Cancer

The findings and conclusions in this report are those of the authors and do not necessarily represent the official position of the U. S. Centers for Disease Control and Prevention.