



2023

Behavioral Risk Factor Surveillance System

Asthma Call-back Survey

Summary Data Quality Report



**National
Asthma
Control
Program**

Version 1.0.0
09/16/2024

ACKNOWLEDGMENTS

The Asthma Call-back Survey (ACBS) is funded by the National Asthma Control Program (NACP) in the Asthma and Air Quality Branch (AAQB) of the National Center for Environmental Health (NCEH). The state health departments jointly administer the ACBS with the National Center for Chronic Disease Prevention and Health Promotion (NCCDPHP), Division of Population Health (DPH).

The NCEH and NCCDPHP greatly appreciate the efforts of the BRFSS staff in each ACBS-participating state.

Hailay Desta Teklehaimanot, MD, MSc, DSc
Branch Chief
Asthma and Air Quality Branch
Division of Environmental Health Science and Practice
National Center for Environmental Health
Centers for Disease Control and Prevention
4770 Buford Hwy, NE
Mailstop S106-6
Atlanta, GA 30341 USA

Phone: (770) 488-3885
E-mail: urr6@cdc.gov

Machell G. Town, PhD
Branch Chief
Population Health Surveillance Branch
Division of Population Health
National Center for Chronic Disease Prevention and Health Promotion
Centers for Disease Control and Prevention
4770 Buford Hwy, NE
Mailstop S107-6
Atlanta, GA 30341 USA

Phone: (770) 488-4681
E-mail: mpt2@cdc.gov

2023 Asthma Call-back Survey (ACBS) Summary Data Quality Report

Introduction

Procedures for interview disposition and response rates for the Behavioral Risk Factor Surveillance System (BRFSS) Asthma Call-back Survey (ACBS) follow the usual BRFSS procedures; however, some additions and adaptations are required for the call-back survey. Disposition codes, disposition code categories, and response rates are discussed in the sections below. Figure 1 (on page 7) is a flow chart that describes the eligibility paths BRFSS respondents with asthma follow through the ACBS process.

Because asthma characteristics vary by season, a seasonal analysis must consider any state for which interviewing was not conducted throughout the year. States may have interrupted interviewing due to contract interruptions with their data collection company. In addition, some ACBS interviews are finalized in the first few months of the next calendar year. If a state has less than 6 complete months of child or adult data, the data from that state are not considered sufficiently comparable with the data from other states and are excluded from the public release file and the response rate calculations. If a state has fewer than seventy-five (75) complete child interviews, reliable weights cannot be calculated, and the child data from that state are excluded from the public release file. Also, if a state has fewer than two hundred (200) complete adult interviews, reliable weights cannot be calculated, and the adult data for that state are excluded from the public release file.

Appendix A (starting on page 11) presents tables showing disposition code categories, response rates, and completed interviews by month for each state participating in the ACBS each year. Appendix B (starting on page 18) provides additional instructions on assigning the ACBS-specific disposition codes. Appendix C (starting on page 22) presents the ACBS nonresponse bias analysis plan and supporting tables showing demographic breakout and prevalence for each state. Details on BRFSS response rates and procedures can be found in the BRFSS Summary Data Quality Report for each survey year at [CDC - BRFSS Annual Survey Data](#).

Disposition Codes

The BRFSS disposition codes are used for the ACBS; however, a few additional codes are needed to account for situations specific to a call-back survey. In the list below, disposition codes added to the ACBS are underlined and bolded. There are no equivalent BRFSS codes for ACBS-specific codes. Detailed descriptions of the ACBS codes can be found in Appendix B.

The ACBS 4-digit disposition codes for 2023 are:

I. Eligible, contacted: complete interview

1100 Complete.

1200 Partial complete (through the end of section 8).

II. Eligible, contacted: refusal or termination

- 4413** Refused to participate in the call-back during the BRFSS interview.
- 2112** Refused to begin the ACBS interview after contacted.
- 2120** Terminated within the questionnaire during the ACBS interview before section 9.
- 2211** Refused to allow combining ACBS responses with BRFSS responses.
- 2212** Refused to answer the “ever had asthma” question during the ACBS interview.

III. Eligible, lost to follow-up because unable to contact or communicate with the BRFSS respondent with asthma

- 2111 Hang up or termination before respondent contacted. Household contacted but ACBS respondent not contacted.
- 2210 Selected respondent never reached or reached but did not begin interview during interviewing period. Selected respondent away from residence during the entire interviewing period.
- 2320 Selected respondent physically or mentally unable to complete an interview during the entire interviewing period.
- 2330 Language problem after respondent selection.

- 3100 Contact, hang-up or termination, unknown if private residence.
- 3130 No answer.
- 3140 Telephone answering device, unknown if private residence.
- 3200 Hang-up or termination, known household. Household contact, eligibility undetermined.
- 3322 Physical or mental impairment.
- 3330 Language problem.

- 4100 Household members away from residence during entire interviewing period.
- 4800 No call attempt made, due to reaching agreed-upon maximum
- 4900 Miscellaneous, non-eligible (for ACBS miscellaneous non-contact).

- 4306** Selected ACBS respondent no longer living in the BRFSS household.

Temporary codes: should be resolved prior to submission

- 5050 Hang-up, unknown if housing unit.
- 5100 Appointment.
- 5111 Household-level refusal.
- 5112 Refusal: hang-up or termination.
- 5120 Break off/termination in questionnaire before Section 9.
- 5130 No answer.
- 5140 Answering machine, unknown if private residence.
- 5220 Answering machine, message confirming residential status.
- 5320 Physical or mental impairment.
- 5330 Language problem.
- 5550 Busy.
- 5560 Unsafe location for interview.

IV. Eligible, lost to follow-up for technical reasons

- 3150 Telecommunication technological barrier, unknown if private residence.
- 3700 On never-call list.

- 4200 Dedicated fax/data/modem line with no human contact.
- 4300 Telephone number no longer in service or changed. Non-working/disconnected number.
- 4400 Busy/Fast busy/Circuit busy.
- 4430 Call forwarding/Pager.
- 4450 Landline sample number connects to cell phone.
- 4460 Cell phone sample number connects to landline.
- 4470 Cell phone respondent also has landline, less than 90% of all calls on cell phone.
- 4500 Not a private residence – business.
- 4510 Not a private residence – group home.

- 5150 Technological barrier other than answering machine—unknown if private residence.
- 5200 Fax/Data/Modem.
- 5300 Phone number temporarily out of service. Possible non-working number.
- 5400 Technological barrier other than answering machine with message confirming residential status. Fast busy. Circuit busy.
- 5599 Mistaken Ctrl-End.
- 5700 Supervisor attention needed.
- 5900 Null attempt.
- 9999 Missing disposition code.

V. Ineligible: all codes specific to ACBS (no BRFSS equivalent)

- 2290 Most-knowledgeable person is not parent or guardian.
- 2291 No parent or legal guardian in the household (child ineligible).
- 4480 Not recruited for call-back at BRFSS interview (excluded by state).
- 4490 Random child/adult selection: adult ineligible, child selected.
- 4491 Random child/adult selection: child ineligible, adult selected.

- 4405 Out-of-state when ACBS records are not transferred to state of residence.
- 4700 Household, no eligible respondent (respondent does not have asthma).
- 4411 Selected respondent not eligible for follow-up.
- 4412 Transferred from BRFSS but not attempted (excluded by state).
- 4471 Misdiagnosed asthma in respondent.

Definitions and Labels for Disposition Code Categories

Because the ACBS is a call-back interview, all those identified with asthma at the BRFSS interview are, with a few notable exceptions, eligible for the call-back survey. The ACBS eligibility flow chart (Figure 1) summarizes how BRFSS respondents are categorized for ACBS response rate calculation.

ACBS interviews are considered complete (COIN) if the respondents finish the entire interview or if they complete through section 8 of the ACBS interview. ACBS interviews are refusals if the respondent refuses participation at either the BRFSS interview or at the time of the ACBS interview. Terminations are ACBS interviews that start but are terminated during the interview before completing section 8 (Medication Section).

The disposition codes that relate to contact problems or technology issues are considered “eligible but lost to follow-up.” If they had been contacted, a small proportion of those eligible but lost to follow-up might have been ineligible.

BRFSS respondents with asthma who are considered ineligible for the ACBS include those who are not asked to participate at the time of the BRFSS interview. Each year, between 10% and 15% of those technically eligible are not asked to participate in the call-back survey.

Respondents might not be asked for several reasons:

- States with split samples may include respondents in the call-back only if they are in specified splits of the BRFSS sample. Counts for states that exclude split-sample respondents are excluded from the following tables and rate calculations.
- The BRFSS respondent may partially complete the BRFSS interview but terminate before the call-back request.
- Specific state BRFSS call-back contracts may limit the number of call-back interviews due to budgetary constraints.
- States may stop conducting call-back interviews during contract negotiations.

BRFSS respondents with asthma who are asked to participate in the ACBS but are later classified as ineligible include:

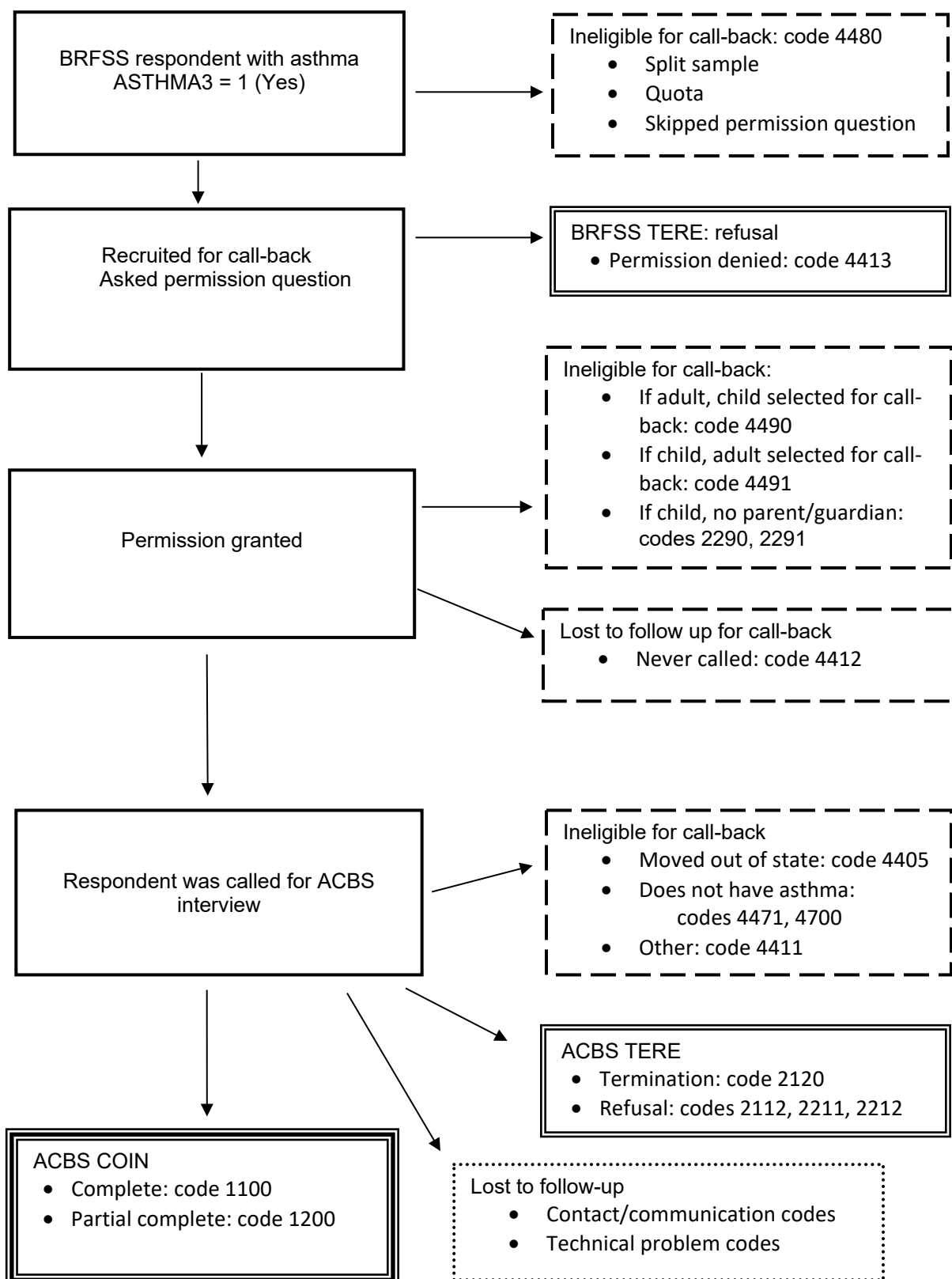
- Respondents in households where both the selected adult and selected child in the household have asthma. When both have asthma, only one is eligible for the ACBS.
- Respondents who move out-of-state between the BRFSS interview and the ACBS interview in states that are not transferring ACBS interview data or to/from states not participating in the ACBS.
- Respondents who indicate, at the time of the ACBS interview, that the reported diagnosis of asthma was an error.
- Child respondents for whom the adult BRFSS respondent is not the child’s parent or guardian.
- Some respondents in states that have reached a pre-specified quota for ACBS interviews.

The following table indicates how disposition codes are grouped into response rate categories shown in the eligibility flow chart (Figure 1):

Table 1: Disposition Code Categories

Category	Disposition Codes	Notes
Eligible COIN Completed interview	1100, 1200	Through section 8
Eligible TERE Terminations and refusals	<u>4413</u>	At BRFSS interview
	<u>2112, 2120, 2211, 2212,</u>	At ACBS
Eligible, lost to follow-up Not interviewed	2111, 2210, 2320, 2330, 3100, 3130, 3140, 3200, 3322, 3330, 4100, 4900, <u>4306</u> , 5050, 5100, 5111, 5112, 5120, 5130, 5140, 5220, 5320, 5330, 5550, 5560	Unable to contact or communicate with eligible respondent
	3150, 3700, 4200, 4300, 4400, 4430, 4450, 4460, 4470, 4500, 4510, 5400, 5150, 5200, 5300, 5599, 5700, 5900, <u>9999</u>	Technical problems
Ineligible	<u>2290, 2291, 4480, 4490, 4491</u>	At BRFSS interview
	<u>4405, 4700, 4411, 4471</u>	At ACBS
	<u>4412, 4800</u>	No ACBS attempt

Figure 1: ACBS Eligibility Flow Chart:



ACBS Response Rates

The ACBS Interview Completion Rate is the proportion of completed interviews among eligible respondents who are contacted for and started the ACBS interview. Those who refuse at the initial BRFSS interview (4413), are ineligible, and those never contacted are excluded from the denominator. This rate is based on actual contacts with the eligible respondents at the time of the call-back interview. The numerator of the rate includes completed interviews (COIN). The denominator of the rate includes completed interviews (COIN), plus the number contacted later for the ACBS interview who refused or terminated the interview (disposition codes 2112, 2120, 2211, and 2212).

The ACBS Cooperation Rate is the proportion of completed interviews among all eligible respondents who are recruited and contacted for the ACBS interview. Eligible respondents who refuse the call-back at the time of the BRFSS interview are included. Non-contacts are excluded from the denominator, but contacts with communication problems specific to the respondent with asthma are included. The numerator of the rate consists of completed interviews (COIN). The denominator of the rate includes completed interviews (COIN), plus refusals and terminations (TERE), plus the number of non-interviews that involved language problems with the respondent with asthma (2330) or physical/mental impairment of the respondent with asthma (2320). A Cooperation Rate below sixty-five percent (65%) may indicate some problem with interviewing techniques.

The Refusal Rate is the percentage of all eligible respondents who refuse to be interviewed or terminate an interview early in the questionnaire. The numerator includes terminations and refusals (TERE). The denominator is the same as for the CASRO rate (below). The denominator includes completed interviews (COIN), terminations and refusals (TERE), and a proportion of those eligible, but lost to follow-up. The proportion represents an estimate of the number of those lost to follow-up who would be expected to remain eligible if they had been contacted. The proportion of cases lost to follow-up that are estimated to be eligible is the same as the proportion of cases not lost to follow-up that are eligible. A Refusal Rate above thirty-five percent (35%) indicates some problem with interviewing techniques.

The Council of American Survey Research Organizations (CASRO) rate is a measure of respondent cooperation and is generally defined as the proportion of all eligible respondents in the sample for whom an interview has been completed. The numerator of the CASRO rate includes completed interviews (COIN). The denominator includes completed interviews (COIN), terminations and refusals (TERE), and a proportion of those eligible, but lost to follow-up. The proportion represents an estimate of the number of those lost to follow-up who would be expected to remain eligible if they had been contacted. The proportion of cases lost to follow-up that are estimated to be eligible is the same as the proportion of cases not lost to follow-up that are eligible. A CASRO rate below forty percent (40%) should be cause for a review of data collection practices that could affect it, especially sample management and interviewer recruitment, retention, training, supervision, and monitoring.

ACBS response rate formulae are specified below. ACBS response rate tables, including response rates for each state/area participating in the ACBS, can be found in Appendix A. Details on ACBS-specific disposition codes can be found in Appendix B.

Response Rate Formulae for the ACBS

ACBS Interview Completion Rate:

$$\frac{1100 + 1200}{1100 + 1200 + \underline{2112} + \underline{2120} + \underline{2211} + \underline{2212}}$$

ACBS Cooperation Rate:

$$\frac{1100 + 1200}{1100 + 1200 + \underline{2112} + \underline{2120} + \underline{2211} + \underline{2212} + \underline{4413} + 2320 + 2330}$$

ACBS CASRO Rate:

$$\frac{1100 + 1200}{[1100 + 1200 + \underline{2112} + \underline{2120} + \underline{2211} + \underline{2212} + \underline{4413}] + P * [\text{Eligible lost}]}$$

ACBS Refusal Rate:

$$\frac{\underline{2112} + \underline{2120} + \underline{2211} + \underline{2212} + \underline{4413}}{[1100 + 1200 + \underline{2120} + \underline{2211} + \underline{2212} + \underline{2112} + \underline{4413}] + P * [\text{Eligible lost}]}$$

Where:

P (Proportion) = (COIN + ACBS TERE) / (COIN + ACBS TERE + Ineligible)

$$\frac{[(1100+1200) + (\underline{2112} + \underline{2120} + \underline{2211} + \underline{2212})]}{[(1100+1200) + (\underline{2112} + \underline{2120} + \underline{2211} + \underline{2212}) + \underline{4405} + \underline{4700} + \underline{4411} + \underline{4471} + \underline{2291} + \underline{2290} + \underline{4480} + \underline{4490} + \underline{4491} + \underline{4412})]}$$

Eligible lost = 2111, 2210, 2220, 2320, 2330, 3100, 3130, 3140, 3200, 3322, 3330, 4100, 4900, 4306, 5050, 5100, 5111, 5112, 5120, 5130, 5140, 5220, 5320, 5330, 5550, 5560, 3150, 3700, 4200, 4300, 4400, 4430, 4450, 4460, 4470, 4500, 4510, 5400, 5150, 5200, 5300, 5599, 5700, 5900, 5999.

ACBS Nonresponse Bias

The ACBS uses post-stratification weighting to ensure the sample conforms to the state estimated asthma population with respect to geography, age, sex, race, ethnicity, and other characteristics. Nonresponse bias, however, cannot be completely removed. In order to communicate the potential impact of nonresponse bias on the ACBS analysis results, in Appendix C two groups of tables are being provided (see Appendix C). The first group of tables present ACBS unweighted frequencies for respondents, non-respondents, and BRFSS-eligible asthma respondents by age, sex, and race/ethnicity demographic categories for each state. The second group of tables report current asthma prevalence (Appendix C). ACBS respondents are those respondents who completed or partially completed the interview. Nonresponse for the ACBS is influenced by eligible BRFSS respondents for which no interview was conducted such as: (1) refusals, terminations, and non-consent; (2) lost to follow-up due to non-contact or communication; and (3) lost to follow-up due to technological circumstances. BRFSS-eligible respondents are individuals on the BRFSS survey who answered, “Yes” to the question, “Has a doctor, nurse, or other health professional EVER told you that you had asthma?” A respondent is classified as current prevalence if that person also responded “Yes” to the question: “Do you still have asthma?”

Appendix A:

List of Tables in the 2023 BRFSS ACBS Summary Data Quality Report

Landline and Cell Phone Samples

Table 1.1 ACBS 2023 Disposition Categories by State/Territory: Adult Landline and Cell Phone Sample

Table 1.2 ACBS 2023 Disposition Categories by State/Territory: Child Landline and Cell Phone Sample

Table 2.1 ACBS 2023 Response Rates by State/Territory: Adult Landline and Cell Phone Sample

Table 2.2 ACBS 2023 Response Rates by State/Territory: Child Landline and Cell Phone Sample

Table 3.1 ACBS 2023 Completed Interviews by State/Territory and Month: Adult Landline and Cell Phone Sample

Table 3.2 ACBS 2023 Completed Interviews by State/Territory and Month: Child Landline and Cell Phone Sample

Note:

In this document, the term "state" is used to refer to all areas participating in the ACBS

Table 1.1 ACBS 2023 Disposition Categories by State/Territory: Adult Landline Cell Phone Sample

State	BRFSS Asthma	Ineligible Not Recruited		Recruited for Call-back				Ineligible		Total Called	Eligible				Ineligible
				Refused BRFSS TERE		Agreed		Child Selected	Never Called		COIN	ACBS TERE	Lost to Follow up		
													Contact	Technical	
Arizona	1771	788	44.49%	149	8.41%	834	47.09%	0	1	833	595	65	153	11	9
California	1453	402	27.67%	223	15.35%	828	56.99%	0	57	771	505	42	215	9	0
Connecticut	1455	409	28.11%	111	7.63%	935	64.26%	0	11	924	679	78	161	4	2
Florida	1583	460	29.06%	204	12.89%	919	58.05%	0	4	915	576	128	189	16	6
Georgia	1038	335	32.27%	82	7.90%	621	59.83%	0	9	612	433	62	106	7	4
Hawaii	1187	146	12.30%	344	28.98%	697	58.72%	0	39	658	292	12	344	7	3
Indiana	1652	335	20.28%	216	13.08%	1101	66.65%	0	25	1076	766	104	190	4	12
Iowa	1097	90	8.20%	308	28.08%	699	63.72%	0	0	699	410	36	247	3	3
Kansas	1303	91	6.98%	315	24.17%	897	68.84%	0	157	740	349	19	341	19	12
Kentucky	740	259	35.00%	47	6.35%	434	58.65%	0	33	401	306	38	48	7	2
Maine	2105	270	12.83%	436	20.71%	1399	66.46%	0	56	1343	536	14	712	76	5
Massachusetts	1553	241	15.52%	321	20.67%	991	63.81%	0	57	934	351	10	486	80	7
Michigan	1556	253	16.26%	213	13.69%	1090	70.05%	0	22	1068	765	80	212	6	5
Minnesota	1716	451	26.28%	247	14.39%	1018	59.32%	0	37	981	619	41	306	15	0
Missouri	994	91	9.15%	288	28.97%	615	61.87%	0	37	578	285	22	249	14	8
Montana	1043	60	5.75%	247	23.68%	736	70.57%	0	170	566	232	28	279	19	8
Nebraska	1438	116	8.07%	365	25.38%	957	66.55%	0	34	923	478	68	352	14	10
New Hampshire	984	152	15.45%	124	12.60%	708	71.95%	0	16	692	556	46	80	2	8
New Jersey	1097	273	24.89%	102	9.30%	722	65.82%	0	12	710	491	90	126	3	0
New Mexico	379	51	13.46%	130	34.30%	198	52.24%	0	5	193	96	16	76	2	3
New York*	827	156	18.86%	61	7.38%	610	73.76%	0	8	602	435	75	83	4	5
Ohio	1934	847	43.80%	195	10.08%	892	46.12%	0	59	833	544	54	224	5	6
Oregon	1097	130	11.85%	259	23.61%	708	64.54%	0	267	441	178	6	215	41	1
Rhode Island	919	350	38.08%	92	10.01%	477	51.90%	0	7	470	322	34	111	3	0
Texas	1257	367	29.20%	280	22.28%	610	48.53%	0	25	585	282	19	261	23	0
Utah	1668	140	8.39%	430	25.78%	1098	65.83%	0	67	1031	626	23	360	15	7
Vermont	1227	203	16.54%	134	10.92%	890	72.53%	0	9	881	686	65	120	5	5
Wisconsin	1816	427	23.51%	312	17.18%	1077	59.31%	0	91	986	578	41	361	6	0
Puerto Rico	961	21	2.19%	152	15.82%	788	82.00%	0	39	749	439	31	224	33	22
Total	37850	7914	19.87%	6387	17.30%	23549	62.82%	0	1354	22195	13410	1347	6831	453	153

Notes:

*States included only in version 1 of sample split: New York

Table 1.2 ACBS 2023 Disposition Categories by State/Territory: Child Landline and Cell Phone Sample

State	BRFSS Asthma	Ineligible Not Recruited		Recruited for Call-back				Ineligible		Total Called	Eligible				Ineligible
				Refused BRFSS TERE	Agreed	Child Selected	Never Called	COIN	ACBS TERE		Lost to Follow-up				
											Contact	Technical			
States included in public release file because of more than 75 completes															
Connecticut	214	39	18.22%	11	5.14%	164	76.64%	0	5	159	94	22	41	0	2
Florida	196	48	24.49%	23	11.73%	125	63.78%	0	6	119	79	16	14	2	1
Indiana	275	48	17.45%	40	14.55%	187	68.00%	0	5	182	114	16	49	2	1
New Jersey	175	23	13.14%	16	9.14%	136	77.71%	0	1	135	77	24	32	1	1
Texas	221	44	19.91%	28	12.67%	149	67.42%	0	4	145	80	10	53	1	1
Utah	293	32	10.92%	54	18.43%	207	70.65%	0	2	205	100	9	69	5	2
Vermont	146	18	12.33%	15	10.27%	113	77.40%	0	3	110	80	8	20	1	1
States excluded from public release file because of less than 75 completes															
California	194	45	23.20%	25	12.89%	124	63.92%	0	0	124	62	10	41	2	0
Georgia	171	21	12.28%	24	14.04%	126	73.68%	0	5	121	63	19	37	1	1
Hawaii	213	37	17.37%	54	25.35%	122	57.28%	0	0	122	44	1	58	3	0
Illinois	100	16	16.00%	17	17.00%	67	67.00%	0	2	65	20	8	33	1	0
Kansas	224	27	12.05%	33	14.73%	164	73.21%	0	21	143	59	3	73	0	1
Kentucky	74	10	13.51%	12	16.22%	52	70.27%	0	1	51	26	9	15	1	0
Maine	184	0	0.00%	40	21.74%	144	78.26%	0	0	144	41	0	93	9	1
Massachusetts	203	6	2.96%	58	28.57%	139	68.47%	0	0	139	40	1	81	16	1
Michigan	163	15	9.20%	20	12.27%	128	78.53%	0	5	123	65	5	50	2	1
Minnesota	192	23	11.98%	42	21.88%	127	66.15%	0	0	127	67	7	49	2	0
Missouri	147	0	0.00%	46	31.29%	101	68.71%	0	0	101	37	8	55	1	0
Montana	148	16	10.81%	21	14.19%	111	75.00%	0	26	85	23	4	42	3	1
Nebraska	205	21	10.24%	38	18.54%	146	71.22%	0	0	146	49	13	72	1	3
New Hampshire	94	22	23.40%	14	14.89%	58	61.70%	0	1	57	35	9	8	0	0
New Mexico	59	13	22.03%	9	15.25%	37	62.71%	0	1	36	13	4	9	2	2
New York*	129	16	12.40%	9	6.98%	104	80.62%	0	4	100	68	14	14	2	2
Ohio	250	62	24.80%	37	14.80%	151	60.40%	0	21	130	63	11	52	3	1
Rhode Island	115	15	13.04%	13	11.30%	87	75.65%	0	1	86	53	11	19	2	1
Wisconsin	176	23	13.07%	32	18.18%	121	68.75%	0	4	117	55	7	47	1	0
Puerto Rico	224	11	4.91%	35	15.63%	178	79.46%	0	0	178	73	7	45	7	2
State Total	4385	617	13.69%	699	15.84%	3069	70.47%	0	114	2955	1452	242	1079	63	24

Notes:

States that did not collect child data: Arizona, Iowa, and Oregon

*State included only in version 1 of sample split for children: New York

Table 2.1 ACBS 2023 Response Rates by State/Territory: Adult Landline and Cell Phone Sample

STATE	COMPLETION RATE	COOPERATION RATE	REFUSAL RATE	CASRO RATE
Arizona	90.15%	73.10%	24.23%	67.37%
California	92.32%	65.58%	29.72%	56.63%
Connecticut	89.70%	77.42%	19.41%	69.72%
Florida	81.82%	63.30%	32.20%	55.87%
Georgia	87.47%	75.04%	22.38%	67.30%
Hawaii	96.05%	44.99%	41.16%	33.76%
Indiana	88.05%	70.28%	26.19%	62.69%
Iowa	91.93%	54.23%	35.80%	42.67%
Kansas	94.84%	50.29%	37.36%	39.04%
Kentucky	88.95%	78.26%	20.21%	72.74%
Maine	97.45%	54.36%	30.45%	36.27%
Massachusetts	97.23%	50.00%	33.48%	35.50%
Michigan	90.53%	72.31%	23.98%	62.62%
Minnesota	93.79%	68.25%	26.38%	56.71%
Missouri	92.83%	47.82%	39.88%	36.67%
Montana	89.23%	45.76%	41.50%	35.01%
Nebraska	87.55%	52.47%	36.24%	40.01%
New Hampshire	92.36%	76.58%	21.53%	70.43%
New Jersey	84.51%	71.26%	24.95%	63.80%
New Mexico	85.71%	39.67%	49.81%	32.75%
New York*	85.29%	75.39%	21.37%	68.36%
Ohio	90.97%	68.60%	28.18%	61.56%
Oregon	96.74%	40.09%	50.58%	33.97%
Rhode Island	90.45%	70.93%	24.95%	63.77%
Texas	93.69%	47.47%	42.45%	40.04%
Utah	96.46%	58.02%	33.28%	46.00%
Vermont	91.34%	77.51%	20.27%	69.86%
Wisconsin	93.38%	62.08%	31.22%	51.11%
Puerto Rico	93.40%	70.47%	21.76%	52.21%

TOTAL**91.15%****61.94%****30.72%****52.15%****Notes:**

*States included only in version 1 of sample split: New York

Table 2.2 ACBS 2023 Response Rates by State/Territory: Child Landline and Cell Phone Sample

State	Completion Rate	Cooperation Rate	Refusal Rate	Casro Rate
States included in public release file because of more than 75 completes				
Connecticut	81.03%	72.87%	21.11%	60.12%
Florida	83.16%	66.95%	30.54%	61.87%
Indiana	87.69%	65.90%	27.18%	55.33%
New Jersey	76.24%	64.17%	27.88%	53.68%
Texas	88.89%	66.67%	24.84%	52.30%
Utah	91.74%	61.35%	29.73%	47.20%
Vermont	90.91%	77.67%	19.20%	66.78%
States excluded from public release file because of less than 75 completes				
California	86.11%	63.92%	28.79%	51.00%
Georgia	76.83%	58.88%	31.95%	46.81%
Hawaii	97.78%	44.44%	43.30%	34.64%
Illinois	71.43%	44.44%	38.80%	31.04%
Kansas	95.16%	60.82%	27.00%	44.24%
Kentucky	74.29%	55.32%	35.49%	43.94%
Maine	100.00%	50.00%	22.15%	22.71%
Massachusetts	97.56%	39.22%	32.44%	22.00%
Michigan	92.86%	72.22%	19.23%	50.00%
Minnesota	90.54%	57.76%	31.79%	43.47%
Missouri	82.22%	40.66%	36.73%	25.17%
Montana	85.19%	47.92%	39.80%	36.61%
Nebraska	79.03%	49.00%	34.42%	33.07%
New Hampshire	79.55%	60.34%	36.57%	55.65%
New Mexico	76.47%	50.00%	42.21%	42.21%
New York*	82.93%	73.12%	22.20%	65.63%
Ohio	85.14%	56.76%	35.10%	46.07%
Rhode Island	82.81%	67.09%	25.64%	56.63%
Wisconsin	88.71%	58.51%	31.20%	44.00%
Puerto Rico	91.25%	63.48%	28.89%	50.22%
Total	85.76%	58.87%	30.53%	46.01%

Notes:

States that did not collect child data: Arizona, Iowa, and Oregon

*State included only in version 1 of sample split for children: New York

Table 3.1 ACBS 2023 Completed Interviews by State/Territory and Month: Adult Landline and Cell Phone Sample

STATE	2023												2024				TOTAL
	2023JAN	2023FEB	2023MAR	2023APR	2023MAY	2023JUN	2023JUL	2023AUG	2023SEP	2023OCT	2023NOV	2023DEC	2024JAN	2024FEB	2024MAR	2024APR	
Arizona	.	.	112	121	142	90	8	9	13	8	23	68	3	.	.	.	597
California	.	49	55	45	52	65	56	39	26	32	26	11	5	44	.	.	505
Connecticut	.	55	54	17	303	251	.	.	.	680
Florida	36	91	83	67	61	24	49	65	57	22	7	14	576
Georgia	18	63	63	49	56	45	24	5	5	45	27	25	8	.	.	.	433
Hawaii	.	11	9	18	29	27	43	30	22	17	36	14	30	6	.	.	292
Indiana	24	180	91	133	120	79	90	51	768
Iowa	9	48	34	44	36	42	46	29	32	47	30	13	410
Kansas	.	.	35	48	36	14	27	68	.	63	25	4	.	25	4	.	349
Kentucky	152	154	306
Maine	.	.	.	63	47	58	29	40	46	65	78	66	44	.	.	.	536
Massachusetts	.	.	.	118	23	14	27	25	19	32	47	21	25	.	.	.	351
Michigan	41	117	148	82	59	63	79	38	30	30	34	27	19	.	.	.	767
Minnesota	.	.	39	37	42	89	65	56	50	63	82	96	619
Missouri	.	.	.	65	15	44	9	19	23	31	15	28	36	.	.	.	285
Montana	161	22	49	232
Nebraska	.	.	.	41	48	41	27	14	55	53	66	34	27	68	4	.	478
New Hampshire	10	142	90	23	44	31	.	.	.	60	71	72	14	.	.	.	557
New Jersey	5	34	65	24	38	37	39	36	45	52	51	49	16	.	.	.	491
New York*	.	26	60	35	31	41	33	39	42	39	46	34	9	.	.	.	435
Ohio	.	83	157	31	9	.	3	27	18	63	79	67	7	.	.	.	544
Rhode Island	23	62	76	35	38	15	14	7	4	4	2	21	21	.	.	.	322
Texas	.	48	33	27	22	32	32	27	12	18	9	22	282
Utah	.	.	48	31	54	49	55	79	82	47	59	74	39	9	.	.	626
Vermont	36	139	73	58	67	46	41	29	66	67	46	19	687
Wisconsin	4	83	41	26	37	32	33	52	48	30	30	6	155	1	.	.	578
Puerto Rico	19	78	53	41	44	41	7	.	118	36	2	439
STATE TOTAL RELEASE	182	1051	1275	1105	1010	1098	908	919	856	1172	1194	1349	709	271	44	2	13145

Notes:

*States included only in version 1 of sample split: New York

Table 3.2 ACBS 2023 Completed Interviews by State/Territory and Month: Child Landline and Cell Phone Sample

STATE	2023												2024					
	2023JAN	2023FEB	2023MAR	2023APR	2023MAY	2023JUN	2023JUL	2023AUG	2023SEP	2023OCT	2023NOV	2023DEC	2024JAN	2024FEB	2024MAR	2024APR	2024May	TOTAL
States included in public release file because of having more than 75 completes																		
Connecticut	.	9	12	8	39	26	94
Florida	1	11	11	5	6	3	2	11	11	8	4	5	78
Indiana	2	28	19	24	17	8	12	4	114
New Jersey	1	2	11	3	8	4	7	7	10	8	10	5	76
Texas	2	15	15	9	7	8	13	6	1	1	2	1	80
Utah	.	.	8	2	4	14	9	9	13	7	8	15	6	5	.	.	.	100
Vermont	8	13	14	9	4	4	8	2	5	7	5	1	80
States excluded from public release file because of having less than 75 completes																		
California	.	1	4	5	9	11	10	4	4	1	6	1	1	5	.	.	.	62
Georgia	.	5	11	7	10	7	5	3	3	7	.	5	63
Hawaii	.	4	3	1	1	4	4	8	3	5	1	7	2	1	.	.	.	44
Illinois	.	.	.	2	2	2	3	.	2	2	3	2	1	1	.	.	.	20
Kansas	.	.	7	9	5	3	3	14	.	9	6	1	.	1	1	.	.	59
Kentucky	13	11	2	26
Maine	.	.	.	8	1	3	.	2	5	9	7	4	2	41
Massachusetts	.	.	.	10	5	1	3	3	3	1	10	4	40
Michigan	2	13	10	9	5	9	8	2	2	1	2	2	65
Minnesota	.	.	4	4	3	6	10	8	4	4	9	15	67
Missouri	.	.	.	10	1	7	3	.	4	4	1	2	5	37
Montana	20	3	23
Nebraska	10	6	1	.	5	2	7	8	3	6	1	.	.	49
New Hampshire	1	7	3	5	.	3	.	.	.	4	1	6	4	34
New Mexico	2	.	1	3	.	2	.	.	2	3	.	.	.	13
New York*	.	5	11	7	7	3	4	6	5	5	11	2	1	67
Ohio	.	7	9	2	2	.	3	4	1	5	15	13	2	63
Rhode Island	1	10	13	6	5	2	2	1	1	3	3	5	1	53
Wisconsin	.	5	4	8	.	1	3	8	6	3	1	.	15	1	.	.	.	55
Puerto Rico	18	10	7	1	9	.	.	15	.	10	2	72
STATE TOTAL RE	16	107	150	129	99	129	139	135	112	107	166	161	73	38	2	10	2	1575
Note:																		
States that did not collect child data: Arizona, Iowa, and Oregon																		
*State included only in version 1 of sample split: New York																		

Appendix B: Instructions for Assigning Additional ACBS Disposition Codes

Following are descriptions of the ACBS disposition codes adapted from standard BRFSS disposition codes and the ACBS disposition codes added to the standard set of BRFSS disposition codes. For detailed definitions for the standard BRFSS disposition codes, see the Summary Data Quality Report for each survey year [CDC - BRFSS Annual Survey Data](#).

I. Eligible, contacted: complete interview

1100 Complete

Definition: Respondent completes the ACBS interview through the last question.

1200 Partial complete

Definition: Respondent completes the ACBS interview at least through the end of Section 8 (medications).

II. Eligible, contacted: refusal or termination

4413 Refused to participate in the call-back during the BRFSS interview

Definition: During the BRFSS interview, respondents who indicate they have ever been told by a doctor that they have asthma are asked if they will participate in an additional survey at a later date. Some state Institutional Review Boards (IRBs) require that the content of the additional survey (asthma) be disclosed; other state IRBs require that the specific content not be disclosed. Some states have multiple call-back surveys in the field and do not specify the content of any of the call-back interviews. If a respondent refuses to participate in the call-back survey, that record is assigned disposition code 4413.

2112 Refused to begin the ACBS interview after contacted

Definition: If the selected respondent is contacted for the ACBS interview but refuses to begin the interview, then the record is assigned code 2112.

2120 Terminated within the questionnaire during the ACBS interview

Definition: If the respondent is contacted for the ACBS and terminates after the interview begins (section 3) but before completing section 8, then record is considered incomplete and is assigned disposition code 2120.

2211 Refused to allow combining ACBS responses with BRFSS responses

Definition: Some states require that the respondent provide active approval to combine their responses from the initial BRFSS interview with their responses from the ACBS interview. This approval may be requested at either the initial BRFSS interview or at the beginning of the ACBS interview. If the respondent does not approve combining data from the two interviews, the record is assigned disposition code 2211.

2212 Refused to answer the “ever had asthma” question during the ACBS interview

Definition: The selected respondent is contacted for the ACBS interview but refuses to answer the initial asthma question. If the respondent answers "don't know" or "refused" to the ACBS question EVER-ASTH (2.1) "Have you ever been told by a doctor or other health professional that (you have/sample child has) asthma?", then the record is assigned code 2212.

III. Eligible, lost to follow-up because unable to contact or communicate with the BRFSS respondent

4306 Selected ACBS respondent no longer living in the BRFSS household

Definition: The BRFSS respondent with asthma left the BRFSS household between the BRFSS interview and the ACBS interview. If the selected respondent (from the BRFSS) no longer lives in the BRFSS household but did live in the household during the BRFSS interview, then attempts should be made to obtain new contact information for the selected respondent, and the follow-up should be conducted using the new telephone number. If this is not possible or the household refuses to provide new contact information, then the record is assigned disposition code 4306.

Refer to the Annual Survey Data and Documentation for each survey year for the definitions of all other codes in this category
(http://www.cdc.gov/brfss/annual_data/annual_data.htm).

IV. Eligible, lost to follow-up for technical reasons

Refer to the Annual Survey Data and Documentation for each survey year for the definitions of all codes in this category
(http://www.cdc.gov/brfss/annual_data/annual_data.htm).

V. Ineligible

2290 The person the most knowledgeable about the selected child with asthma is not the parent or legal guardian (child ineligible)

Definition: This code applies only to the child ACBS interview. The child selected during the BRFSS interview is eligible for the ACBS (the BRFSS respondent indicated that the selected child has an asthma diagnosis). The ACBS child protocol allows a parent or guardian to transfer the interview to a more knowledgeable proxy respondent. If the BRFSS respondent is not the parent or guardian of the selected child with asthma, but the parent or guardian is present to transfer to the person most knowledgeable about the child's health, but the most knowledgeable person is not available, then the child is ineligible for the ACBS. The child record is assigned disposition code 2290

2291 No parent or legal guardian in the household (child ineligible)

Definition: This code applies only to the child ACBS interview. The child selected during the BRFSS interview is eligible for the ACBS (the BRFSS respondent

indicated that the selected child has an asthma diagnosis); however, ACBS child protocol requires that the BRFSS respondent must be the parent or guardian of the child to provide proxy responses for the child or to approve transfer to a more-knowledgeable proxy respondent. If there is no parent or guardian of the selected child with asthma in the household, the child is ineligible for the ACBS. The child record is assigned disposition code 2291.

4405 Out-of-state

Definition: The BRFSS question that determines eligibility for the ACBS is “Have you ever been told by a doctor, nurse, or other health professional that (you have/the sample child has) asthma?” Respondents who answer “yes” are eligible for the ACBS. If the respondent is a state resident at the time of the BRFSS interview but moves to an out-of-state residence between the BRFSS interview and the ACBS interview, the respondent is not eligible for the ACBS if either the new state or the old state is not participating in record transfers, and the record is assigned disposition code 4405.

4700 Household, no eligible respondent (respondent does not have asthma)

Definition: The BRFSS question that determines eligibility for the ACBS is “Have you ever been told by a doctor, nurse, or other health professional that (you have/the sample child has) asthma?” Respondents who answer “yes” are eligible for the ACBS. If the respondent informs the ACBS interviewer that the recorded response from the BRFSS interview was in error and terminates the call, then the respondent is not eligible for the ACBS, and the record is assigned disposition code 4700.

4411 Selected respondent not eligible for follow-up

Definition: If the respondent disagrees with the recorded response to the asthma question from the BRFSS interview and answers “no” to the ACBS question EVER-ASTH (2.1) “Have you ever been told by a doctor or other health professional that (you have/the sample child has) asthma?”, then the respondent is not eligible for the ACBS, and the record is assigned disposition code 4411.

4412 Transferred from BRFSS but not attempted (excluded by state)

Definition: The BRFSS question that determines eligibility for the ACBS is “Have you ever been told by a doctor, nurse, or other health professional that (you have/the sample child has) asthma?” Respondents who answer “yes” are eligible for the ACBS. Eligible respondents are then asked for permission to call back. Those that agree should be called for the ACBS interview, but if a respondent eligible to be called is transferred from BRFSS to the ACBS but never called, then the record is assigned disposition code 4412.

4471 Misdiagnosed asthma in respondent (2008 and later)

Definition: The BRFSS question that determines eligibility for the ACBS is “Have you ever been told by a doctor, nurse, or other health professional that (you have/the sample child has) asthma?” Respondents who answer “yes” are eligible for the

ACBS. The initial diagnosis, however, could have been in error and changed. This misdiagnosis is not captured by the BRFSS or ACBS. If the respondent informs the interviewer of the misdiagnosis, the respondent is not eligible for the ACBS, and the record is assigned disposition code 4471.

4480 Not recruited for call-back at BRFSS interview (excluded by state)

Definition: The BRFSS question that determines eligibility for the ACBS is “Have you ever been told by a doctor, nurse, or other health professional that (you have/the sample child has) asthma?” Respondents who answer “yes” are eligible for the ACBS. Eligible respondents are then asked for permission to call back. Those who agree should be called for the ACBS interview. However, if a respondent eligible to be called is not transferred from BRFSS to the ACBS and is never called, then the record is assigned disposition code 4480.

4490 Random child/adult selection: adult ineligible, child selected

Definition: If both the BRFSS respondent and the randomly selected child in the household have asthma and the BRFSS respondent agrees to the call-back interview, one or the other is randomly selected to be eligible for the call-back. If the child is selected, the adult is ineligible, and the adult record is assigned disposition code 4490.

4491 Random child/adult selection: child ineligible, adult selected

Definition: If both the BRFSS respondent and the randomly selected child in the household have asthma and the BRFSS respondent agrees to the call-back interview, one or the other is randomly selected to be eligible for the call-back. If the adult is selected, the child is ineligible, and the child record is assigned disposition code 4491.

Appendix C:
Asthma Call-back Survey (ACBS)
Non-response Bias Analysis

Two sets of data tables follow for adult and child participants. The first table reports ACBS unweighted frequencies for respondents, non-respondents, and BRFSS-eligible asthma respondents by age, sex, and race/ethnicity demographic categories for each state. The second table reports estimated current asthma percentage among individuals who have ever been diagnosed with asthma.

- Table 1A. Percentage of ACBS adult respondents, non-respondents, and BRFSS-eligible asthma respondents by demographic groups and state/territory
- Table 1B. Percentage of ACBS child respondents (0-17 years), non-respondents, and BRFSS-eligible asthma respondents by demographic groups and state/territory
- Table 2A. Estimated percentage of current asthma status among adults ever diagnosed with asthma by state/territory
- Table 2B. Estimated percentage of current asthma status among children (0-17 years) ever diagnosed with asthma by state/territory

Notes:
For tables in Appendix C denominator excludes: Respondents with do not know/refused/missing responses.

Table 1A. Percentage of ACBS adult (aged ≥ 18) respondents, non-respondents, and BRFSS-eligible asthma respondents by demographic groups and state/territory											
		Eligible Asthma Respondents				Non-Respondents		Respondents			
State	Demographics	Sample size (unweighted)	Percent (unweighted)	Weighted total	Percent (weighted)	Sample size (unweighted)	Percent (unweighted)	Sample size (unweighted)	Percent (unweighted)	Weighted total	Percent (weighted)
States/areas total	Male	13,657	37.5	9,330,759	40.1	8,289	37.8	5,368	37.2	9,327,635	40.1
	Female	22,720	62.5	13,927,128	59.9	13,639	62.2	9,081	62.8	13,941,501	59.9
	Age 18 to 24	2,531	7.1	3,489,650	15.2	1,603	7.5	928	6.5	3,443,246	14.9
	Age 25 to 34	4,217	11.8	4,050,176	17.7	2,667	12.4	1,550	10.8	4,105,695	17.8
	Age 35 to 44	4,814	13.4	3,540,009	15.5	3,228	15	1,586	11.1	3,478,520	15.1
	Age 45 to 54	5,334	14.9	3,345,204	14.6	3,296	15.3	2,038	14.2	3,490,915	15.1
	Age 55 to 64	6,662	18.6	3,614,286	15.8	3,761	17.5	2,901	20.3	3,635,616	15.8
	Age 65 or older	12,250	34.2	4,857,102	21.2	6,940	32.3	5,310	37.1	4,898,199	21.2
	White - Non-Hispanic	26,452	74.1	13,081,643	57.4	15,461	72	10,991	77.2	14,063,824	61.2
	Black - Non-Hispanic	2,345	6.6	2,760,811	12.1	1,485	6.9	860	6	2,443,245	10.6
	Other race only, Non-Hispanic	1,669	4.7	1,587,575	7	1,153	5.4	516	3.6	1,459,262	6.4
	Multiracial, Non-Hispanic	1,220	3.4	862,440	3.8	787	3.7	433	3	910,550	4
	Hispanic	4,013	11.2	4,506,354	19.8	2,577	12	1,436	10.1	4,093,577	17.8
Arizona	Male	631	35.6	323,427	38.3	393	35.4	238	36.1	324,401	38.3
	Female	1,140	64.4	521,772	61.7	718	64.6	422	63.9	522,260	61.7
	Age 18 to 24	97	5.6	126,791	15.3	59	5.4	38	5.8	126,791	15.2
	Age 25 to 34	173	10	150,301	18.1	116	10.7	57	8.8	150,301	18
	Age 35 to 44	185	10.7	133,173	16	126	11.6	59	9.1	131,585	15.8
	Age 45 to 54	238	13.7	108,394	13	156	14.4	82	12.6	106,310	12.7
	Age 55 to 64	315	18.1	116,403	14	187	17.2	128	19.7	121,624	14.6
	Age 65 or older	728	41.9	196,255	23.6	441	40.6	287	44.1	197,945	23.7
	White - Non-Hispanic	1,211	70.4	489,368	59.2	730	67.8	481	74.8	539,517	64.7
	Black - Non-Hispanic	50	2.9	54,019	6.5	39	3.6	11	1.7	32,852	3.9
	Other race only, Non-Hispanic	130	7.6	48,328	5.8	89	8.3	41	6.4	42,828	5.1
	Multiracial, Non-Hispanic	41	2.4	27,847	3.4	27	2.5	14	2.2	25,367	3
	Hispanic	287	16.7	207,375	25.1	191	17.8	96	14.9	193,388	23.2
California	Male	637	43.8	1,653,939	43.7	395	43.6	242	44.2	1,653,939	43.7
	Female	816	56.2	2,129,444	56.3	511	56.4	305	55.8	2,129,444	56.3
	Age 18 to 24	123	8.6	576,215	15.5	79	9	44	8	576,215	15.2
	Age 25 to 34	162	11.3	607,211	16.4	97	11	65	11.9	607,211	16
	Age 35 to 44	215	15	662,579	17.9	139	15.8	76	13.9	696,383	18.4
	Age 45 to 54	198	13.9	538,831	14.5	136	15.4	62	11.3	564,215	14.9
	Age 55 to 64	245	17.1	586,242	15.8	145	16.4	100	18.3	590,350	15.6
	Age 65 or older	486	34	737,308	19.9	286	32.4	200	36.6	749,009	19.8
	White - Non-Hispanic	765	53.6	1,401,508	37.5	448	50.5	317	58.7	1,728,067	46.3
	Black - Non-Hispanic	123	8.6	307,752	8.2	83	9.3	40	7.4	251,805	6.7
	Other race only, Non-Hispanic	134	9.4	641,593	17.2	88	9.9	46	8.5	531,304	14.2
	Multiracial, Non-Hispanic	48	3.4	154,560	4.1	32	3.6	16	3	163,381	4.4
	Hispanic	358	25.1	1,232,625	33	237	26.7	121	22.4	1,058,964	28.4

Table 1A. Percentage of ACBS adult (aged ≥ 18) respondents, non-respondents, and BRFSS-eligible asthma respondents by demographic groups and state/territory											
		Eligible Asthma Respondents				Non-Respondents		Respondents			
State	Demographics	Sample size (unweighted)	Percent (unweighted)	Weighted total	Percent (weighted)	Sample size (unweighted)	Percent (unweighted)	Sample size (unweighted)	Percent (unweighted)	Weighted total	Percent (weighted)
Connecticut	Male	562	38.6	184,166	40.4	264	37.8	298	39.3	184,166	40.4
	Female	894	61.4	272,009	59.6	434	62.2	460	60.7	272,009	59.6
	Age 18 to 24	91	6.4	69,792	15.6	46	6.8	45	6	69,792	15.5
	Age 25 to 34	170	11.9	81,696	18.3	75	11	95	12.8	81,696	18.1
	Age 35 to 44	219	15.4	70,841	15.8	125	18.4	94	12.6	70,689	15.7
	Age 45 to 54	230	16.2	60,891	13.6	137	20.1	93	12.5	61,500	13.6
	Age 55 to 64	310	21.8	79,646	17.8	131	19.3	179	24.1	80,928	18
	Age 65 or older	404	28.4	84,216	18.8	166	24.4	238	32	85,945	19.1
	White - Non-Hispanic	1,043	73.5	267,568	60.2	452	66.6	591	79.8	296,954	66.3
	Black - Non-Hispanic	116	8.2	65,496	14.7	63	9.3	53	7.2	68,895	15.4
	Other race only, Non-Hispanic	35	2.5	16,844	3.8	25	3.7	10	1.3	4,424	1
	Multiracial, Non-Hispanic	34	2.4	15,224	3.4	15	2.2	19	2.6	17,531	3.9
	Hispanic	192	13.5	79,596	17.9	124	18.3	68	9.2	60,170	13.4
Florida	Male	550	34.7	747,818	39.8	303	34.4	247	35.1	747,818	39.8
	Female	1,033	65.3	1,129,725	60.2	577	65.6	456	64.9	1,129,879	60.2
	Age 18 to 24	87	5.6	226,107	12.2	51	5.9	36	5.2	226,107	12.1
	Age 25 to 34	164	10.5	345,741	18.6	108	12.6	56	8	345,741	18.4
	Age 35 to 44	157	10.1	216,734	11.7	88	10.2	69	9.9	220,192	11.7
	Age 45 to 54	211	13.6	243,229	13.1	126	14.7	85	12.2	252,314	13.5
	Age 55 to 64	310	19.9	310,052	16.7	157	18.3	153	22	308,933	16.5
	Age 65 or older	628	40.3	516,662	27.8	330	38.4	298	42.8	521,297	27.8
	White - Non-Hispanic	1,151	74.5	1,034,420	56.5	628	73.1	523	76.1	1,052,969	56.5
	Black - Non-Hispanic	141	9.1	239,361	13.1	86	10	55	8	228,627	12.3
	Other race only, Non-Hispanic	59	3.8	77,876	4.3	31	3.6	28	4.1	100,610	5.4
	Multiracial, Non-Hispanic	41	2.7	66,329	3.6	19	2.2	22	3.2	56,986	3.1
	Hispanic	154	10	412,777	22.5	95	11.1	59	8.6	423,255	22.7
Georgia	Male	351	33.8	442,279	39.4	192	35.4	159	32.1	441,247	39.3
	Female	687	66.2	681,358	60.6	351	64.6	336	67.9	681,732	60.7
	Age 18 to 24	63	6.2	161,241	14.4	30	5.7	33	6.7	161,264	14.4
	Age 25 to 34	124	12.1	255,482	22.9	74	14	50	10.1	254,883	22.8
	Age 35 to 44	117	11.4	163,117	14.6	62	11.7	55	11.2	162,952	14.6
	Age 45 to 54	161	15.7	173,714	15.6	78	14.7	83	16.8	175,056	15.6
	Age 55 to 64	163	15.9	153,779	13.8	84	15.8	79	16	154,403	13.8
	Age 65 or older	395	38.6	208,679	18.7	202	38.1	193	39.1	210,432	18.8
	White - Non-Hispanic	629	61.6	542,366	48.9	305	57.3	324	66.3	573,188	51.7
	Black - Non-Hispanic	295	28.9	427,090	38.5	177	33.3	118	24.1	348,931	31.5
	Other race only, Non-Hispanic	21	2.1	21,493	1.9	8	1.5	13	2.7	28,983	2.6
	Multiracial, Non-Hispanic	32	3.1	47,195	4.3	16	3	16	3.3	71,305	6.4
	Hispanic	44	4.3	71,163	6.4	26	4.9	18	3.7	85,724	7.7

Table 1A. Percentage of ACBS adult (aged ≥ 18) respondents, non-respondents, and BRFSS-eligible asthma respondents by demographic groups and state/territory											
		Eligible Asthma Respondents				Non-Respondents		Respondents			
State	Demographics	Sample size (unweighted)	Percent (unweighted)	Weighted total	Percent (weighted)	Sample size (unweighted)	Percent (unweighted)	Sample size (unweighted)	Percent (unweighted)	Weighted total	Percent (weighted)
Hawaii	Male	462	38.9	76,147	42.2	343	38.8	119	39.3	76,147	42.2
	Female	726	61.1	104,301	57.8	542	61.2	184	60.7	104,345	57.8
	Age 18 to 24	94	8	21,953	12.3	80	9.2	14	4.7	16,229	9.1
	Age 25 to 34	147	12.5	32,653	18.3	118	13.5	29	9.6	38,377	21.4
	Age 35 to 44	155	13.2	26,441	14.8	124	14.2	31	10.3	26,441	14.7
	Age 45 to 54	170	14.5	25,498	14.3	136	15.6	34	11.3	26,308	14.7
	Age 55 to 64	209	17.8	31,884	17.9	141	16.2	68	22.6	32,176	17.9
	Age 65 or older	398	33.9	39,685	22.3	273	31.3	125	41.5	39,791	22.2
	White - Non-Hispanic	281	23.9	28,573	16	190	21.7	91	30.2	36,598	20.3
	Black - Non-Hispanic	12	1	1,974	1.1	11	1.3	1	0.3	469	0.3
	Other race only, Non-Hispanic	431	36.6	76,577	43	339	38.7	92	30.6	66,250	36.8
	Multiracial, Non-Hispanic	308	26.1	47,353	26.6	230	26.2	78	25.9	48,494	26.9
	Hispanic	146	12.4	23,723	13.3	107	12.2	39	13	28,446	15.8
Indiana	Male	601	36.4	327,356	38.9	315	40.2	286	32.9	327,698	38.9
	Female	1,051	63.6	513,955	61.1	468	59.8	583	67.1	515,669	61.1
	Age 18 to 24	121	7.5	137,885	16.7	58	7.6	63	7.3	137,885	16.5
	Age 25 to 34	203	12.5	149,686	18.1	107	14	96	11.2	150,866	18.1
	Age 35 to 44	222	13.7	129,490	15.7	121	15.9	101	11.8	131,266	15.7
	Age 45 to 54	273	16.9	129,143	15.6	116	15.2	157	18.3	131,988	15.8
	Age 55 to 64	310	19.1	133,456	16.1	140	18.4	170	19.8	135,166	16.2
	Age 65 or older	491	30.3	146,938	17.8	220	28.9	271	31.6	148,186	17.7
	White - Non-Hispanic	1,278	79.1	637,041	77.2	570	75.2	708	82.5	673,922	80.7
	Black - Non-Hispanic	181	11.2	92,006	11.1	99	13.1	82	9.6	61,420	7.4
	Other race only, Non-Hispanic	33	2	18,242	2.2	17	2.2	16	1.9	22,937	2.7
	Multiracial, Non-Hispanic	31	1.9	21,989	2.7	14	1.8	17	2	34,508	4.1
	Hispanic	93	5.8	56,310	6.8	58	7.7	35	4.1	42,718	5.1
Iowa	Male	411	37.5	122,655	39.9	249	38.2	162	36.3	122,655	39.9
	Female	686	62.5	184,797	60.1	402	61.8	284	63.7	184,797	60.1
	Age 18 to 24	110	10.1	47,384	15.5	72	11.1	38	8.6	47,384	15.5
	Age 25 to 34	165	15.1	56,502	18.5	97	15	68	15.3	56,502	18.5
	Age 35 to 44	156	14.3	50,729	16.6	97	15	59	13.3	50,775	16.6
	Age 45 to 54	162	14.9	43,981	14.4	95	14.7	67	15.1	43,971	14.4
	Age 55 to 64	178	16.3	44,535	14.6	99	15.3	79	17.8	44,695	14.6
	Age 65 or older	319	29.3	62,705	20.5	186	28.8	133	30	62,726	20.5
	White - Non-Hispanic	856	78.8	252,141	82.9	485	75.3	371	83.9	270,794	88.7
	Black - Non-Hispanic	70	6.4	12,584	4.1	46	7.1	24	5.4	8,551	2.8
	Other race only, Non-Hispanic	23	2.1	9,209	3	14	2.2	9	2	2,380	0.8
	Multiracial, Non-Hispanic	32	2.9	16,322	5.4	19	3	13	2.9	16,207	5.3
	Hispanic	105	9.7	13,724	4.5	80	12.4	25	5.7	7,499	2.5

Table 1A. Percentage of ACBS adult (aged ≥ 18) respondents, non-respondents, and BRFSS-eligible asthma respondents by demographic groups and state/territory											
		Eligible Asthma Respondents				Non-Respondents		Respondents			
State	Demographics	Sample size (unweighted)	Percent (unweighted)	Weighted total	Percent (weighted)	Sample size (unweighted)	Percent (unweighted)	Sample size (unweighted)	Percent (unweighted)	Weighted total	Percent (weighted)
Kansas	Male	528	40.5	129,230	41.3	386	41.3	142	38.6	129,230	41.3
	Female	775	59.5	183,604	58.7	549	58.7	226	61.4	183,604	58.7
	Age 18 to 24	116	9	56,063	18.1	92	10	24	6.6	44,433	14.3
	Age 25 to 34	159	12.4	48,707	15.7	123	13.4	36	9.8	60,337	19.4
	Age 35 to 44	216	16.8	59,425	19.2	167	18.2	49	13.4	57,930	18.7
	Age 45 to 54	182	14.2	41,469	13.4	134	14.6	48	13.1	42,952	13.8
	Age 55 to 64	224	17.4	47,916	15.5	147	16	77	21	48,165	15.5
	Age 65 or older	389	30.2	56,232	18.2	257	27.9	132	36.1	56,779	18.3
	White - Non-Hispanic	1,090	84.6	236,002	76.4	769	83.4	321	87.7	238,046	76.5
	Black - Non-Hispanic	47	3.6	16,487	5.3	40	4.3	7	1.9	16,790	5.4
	Other race only, Non-Hispanic	37	2.9	13,186	4.3	29	3.1	8	2.2	13,283	4.3
	Multiracial, Non-Hispanic	44	3.4	14,859	4.8	33	3.6	11	3	8,191	2.6
	Hispanic	70	5.4	28,485	9.2	51	5.5	19	5.2	34,685	11.2
Kentucky	Male	255	34.5	204,145	35.7	145	36.4	110	32.2	204,145	35.6
	Female	485	65.5	367,113	64.3	253	63.6	232	67.8	369,441	64.4
	Age 18 to 24	44	6	80,655	14.3	30	7.7	14	4.1	69,047	12.1
	Age 25 to 34	74	10.1	85,385	15.1	43	11	31	9.1	96,993	17
	Age 35 to 44	64	8.8	74,602	13.2	41	10.5	23	6.8	74,602	13.1
	Age 45 to 54	121	16.6	94,101	16.6	64	16.3	57	16.8	95,864	16.8
	Age 55 to 64	143	19.6	95,564	16.9	70	17.9	73	21.5	95,823	16.8
	Age 65 or older	285	39	135,375	23.9	144	36.7	141	41.6	138,091	24.2
	White - Non-Hispanic	590	80.9	466,515	82.8	310	79.3	280	82.8	488,673	85.6
	Black - Non-Hispanic	69	9.5	42,907	7.6	41	10.5	28	8.3	40,695	7.1
	Other race only, Non-Hispanic	14	1.9	12,137	2.2	8	2	6	1.8	7,279	1.3
	Multiracial, Non-Hispanic	30	4.1	21,391	3.8	17	4.3	13	3.8	20,287	3.6
	Hispanic	26	3.6	20,226	3.6	15	3.8	11	3.3	13,896	2.4
Maine	Male	679	32.2	74,583	36.2	486	31.2	193	35.1	74,583	36.2
	Female	1,427	67.8	131,547	63.8	1,070	68.8	357	64.9	131,602	63.8
	Age 18 to 24	99	4.8	24,749	12.2	76	5	23	4.2	24,749	12.1
	Age 25 to 34	166	8	32,318	15.9	131	8.6	35	6.4	33,745	16.5
	Age 35 to 44	275	13.3	38,569	19	232	15.2	43	7.9	37,196	18.2
	Age 45 to 54	284	13.7	29,068	14.3	230	15.1	54	9.9	30,138	14.7
	Age 55 to 64	386	18.6	31,211	15.4	273	17.9	113	20.8	30,746	15
	Age 65 or older	860	41.5	46,804	23.1	584	38.3	276	50.7	47,870	23.4
	White - Non-Hispanic	1,921	92.4	180,554	88.5	1,414	92.2	507	93	188,922	92.6
	Black - Non-Hispanic	8	0.4	1,151	0.6	6	0.4	2	0.4	1,811	0.9
	Other race only, Non-Hispanic	46	2.2	6,538	3.2	39	2.5	7	1.3	1,940	1
	Multiracial, Non-Hispanic	63	3	8,973	4.4	43	2.8	20	3.7	6,998	3.4
	Hispanic	41	2	6,711	3.3	32	2.1	9	1.7	4,322	2.1

Table 1A. Percentage of ACBS adult (aged ≥ 18) respondents, non-respondents, and BRFSS-eligible asthma respondents by demographic groups and state/territory											
		Eligible Asthma Respondents				Non-Respondents		Respondents			
State	Demographics	Sample size (unweighted)	Percent (unweighted)	Weighted total	Percent (weighted)	Sample size (unweighted)	Percent (unweighted)	Sample size (unweighted)	Percent (unweighted)	Weighted total	Percent (weighted)
Massachusetts	Male	624	40.2	376,253	40	477	40	147	40.8	376,478	40
	Female	929	59.8	565,055	60	716	60	213	59.2	565,111	60
	Age 18 to 24	131	8.6	127,989	13.9	101	8.7	30	8.5	127,989	13.8
	Age 25 to 34	225	14.8	169,026	18.4	174	15	51	14.4	169,788	18.3
	Age 35 to 44	236	15.6	159,789	17.4	196	16.9	40	11.3	169,402	18.2
	Age 45 to 54	222	14.6	121,943	13.3	174	15	48	13.6	122,369	13.2
	Age 55 to 64	269	17.7	143,132	15.6	206	17.7	63	17.8	143,866	15.5
	Age 65 or older	433	28.6	196,528	21.4	311	26.8	122	34.5	196,571	21.1
	White - Non-Hispanic	1,132	74.5	636,522	69.2	859	73.6	273	77.6	655,400	70.4
	Black - Non-Hispanic	87	5.7	62,298	6.8	66	5.7	21	6	60,263	6.5
	Other race only, Non-Hispanic	76	5	68,611	7.5	59	5.1	17	4.8	62,224	6.7
	Multiracial, Non-Hispanic	41	2.7	34,138	3.7	28	2.4	13	3.7	40,392	4.3
	Hispanic	183	12	118,915	12.9	155	13.3	28	8	112,900	12.1
Michigan	Male	571	36.7	521,334	40.2	264	37	307	36.5	521,334	39.9
	Female	985	63.3	776,483	59.8	450	63	535	63.5	783,669	60.1
	Age 18 to 24	112	7.3	213,524	16.7	56	8	56	6.7	217,333	16.9
	Age 25 to 34	195	12.7	248,271	19.4	88	12.6	107	12.8	250,001	19.5
	Age 35 to 44	195	12.7	188,116	14.7	116	16.6	79	9.5	188,891	14.7
	Age 45 to 54	236	15.4	177,744	13.9	118	16.9	118	14.2	175,269	13.7
	Age 55 to 64	284	18.5	197,401	15.5	109	15.6	175	21	199,451	15.5
	Age 65 or older	509	33.2	252,149	19.7	211	30.2	298	35.8	252,286	19.7
	White - Non-Hispanic	1,236	81	946,900	74.6	546	78.8	690	82.8	1,021,352	78.9
	Black - Non-Hispanic	159	10.4	174,834	13.8	84	12.1	75	9	141,628	10.9
	Other race only, Non-Hispanic	42	2.8	48,531	3.8	25	3.6	17	2	26,072	2
	Multiracial, Non-Hispanic	36	2.4	35,953	2.8	16	2.3	20	2.4	36,259	2.8
	Hispanic	53	3.5	62,836	5	22	3.2	31	3.7	69,458	5.4
Minnesota	Male	669	39	195,123	38.4	419	39.7	250	37.9	191,288	38.1
	Female	1,047	61	312,507	61.6	637	60.3	410	62.1	311,357	61.9
	Age 18 to 24	122	7.2	69,725	14	79	7.7	43	6.5	68,829	13.7
	Age 25 to 34	220	13.1	100,235	20.1	141	13.8	79	12	100,547	20
	Age 35 to 44	225	13.4	82,800	16.6	140	13.7	85	12.9	83,707	16.7
	Age 45 to 54	254	15.1	67,134	13.5	158	15.4	96	14.5	71,994	14.3
	Age 55 to 64	329	19.5	86,277	17.3	204	19.9	125	18.9	84,138	16.7
	Age 65 or older	534	31.7	92,954	18.6	302	29.5	232	35.2	93,430	18.6
	White - Non-Hispanic	1,435	85.3	389,000	77.9	855	83.2	580	88.5	402,579	80.9
	Black - Non-Hispanic	61	3.6	29,905	6	44	4.3	17	2.6	27,407	5.5
	Other race only, Non-Hispanic	78	4.6	41,201	8.3	59	5.7	19	2.9	25,018	5
	Multiracial, Non-Hispanic	48	2.9	20,372	4.1	31	3	17	2.6	20,222	4.1
	Hispanic	61	3.6	18,861	3.8	39	3.8	22	3.4	22,413	4.5

Table 1A. Percentage of ACBS adult (aged ≥ 18) respondents, non-respondents, and BRFSS-eligible asthma respondents by demographic groups and state/territory											
		Eligible Asthma Respondents				Non-Respondents		Respondents			
State	Demographics	Sample size (unweighted)	Percent (unweighted)	Weighted total	Percent (weighted)	Sample size (unweighted)	Percent (unweighted)	Sample size (unweighted)	Percent (unweighted)	Weighted total	Percent (weighted)
Missouri	Male	379	38.1	250,467	39.2	262	38.1	117	38.2	250,467	39.2
	Female	615	61.9	388,454	60.8	426	61.9	189	61.8	388,498	60.8
	Age 18 to 24	91	9.3	101,657	16.2	65	9.6	26	8.7	112,847	18.1
	Age 25 to 34	131	13.4	114,897	18.3	92	13.5	39	13	102,747	16.5
	Age 35 to 44	138	14.1	106,745	17	106	15.6	32	10.7	102,860	16.5
	Age 45 to 54	143	14.6	85,564	13.7	106	15.6	37	12.4	88,347	14.2
	Age 55 to 64	156	16	85,649	13.7	98	14.4	58	19.4	85,709	13.8
	Age 65 or older	319	32.6	132,192	21.1	212	31.2	107	35.8	130,745	21
	White - Non-Hispanic	738	75.5	451,409	71.7	505	74.8	233	76.9	473,104	74.9
	Black - Non-Hispanic	153	15.6	86,801	13.8	109	16.1	44	14.5	73,023	11.6
	Other race only, Non-Hispanic	22	2.2	19,530	3.1	18	2.7	4	1.3	4,439	0.7
	Multiracial, Non-Hispanic	32	3.3	34,220	5.4	22	3.3	10	3.3	41,683	6.6
	Hispanic	33	3.4	37,325	5.9	21	3.1	12	4	39,651	6.3
Montana	Male	445	42.7	57,565	41.8	336	42.9	109	41.9	57,565	41.7
	Female	598	57.3	80,315	58.2	447	57.1	151	58.1	80,463	58.3
	Age 18 to 24	66	6.4	16,686	12.3	54	7	12	4.6	13,491	9.8
	Age 25 to 34	100	9.7	20,792	15.3	73	9.5	27	10.4	23,986	17.4
	Age 35 to 44	145	14.1	24,865	18.3	116	15.1	29	11.2	21,265	15.4
	Age 45 to 54	144	14	23,932	17.6	113	14.7	31	11.9	28,980	21
	Age 55 to 64	159	15.4	18,030	13.3	118	15.3	41	15.8	18,345	13.3
	Age 65 or older	416	40.4	31,686	23.3	296	38.4	120	46.2	31,961	23.2
	White - Non-Hispanic	831	80.8	106,434	78.1	622	80.8	209	81	110,000	81.4
	Black - Non-Hispanic	5	0.5	1,734	1.3	4	0.5	1	0.4	689	0.5
	Other race only, Non-Hispanic	96	9.3	9,917	7.3	73	9.5	23	8.9	7,307	5.4
	Multiracial, Non-Hispanic	58	5.6	9,650	7.1	39	5.1	19	7.4	9,605	7.1
	Hispanic	38	3.7	8,484	6.2	32	4.2	6	2.3	7,527	5.6
Nebraska	Male	545	37.9	70,835	40.7	332	37.2	213	39	70,835	40.6
	Female	893	62.1	103,371	59.3	560	62.8	333	61	103,437	59.4
	Age 18 to 24	122	8.6	26,190	15.2	80	9.1	42	7.7	26,190	15
	Age 25 to 34	182	12.8	29,814	17.3	122	13.9	60	11	29,814	17.1
	Age 35 to 44	227	15.9	34,430	20	167	19	60	11	34,962	20.1
	Age 45 to 54	224	15.7	26,278	15.3	132	15	92	16.8	27,234	15.6
	Age 55 to 64	250	17.6	24,706	14.3	146	16.6	104	19	25,047	14.4
	Age 65 or older	419	29.4	30,857	17.9	231	26.3	188	34.4	31,025	17.8
	White - Non-Hispanic	1,184	82.9	133,679	77.1	717	80.9	467	86.2	137,898	79.5
	Black - Non-Hispanic	54	3.8	12,110	7	43	4.9	11	2	8,567	4.9
	Other race only, Non-Hispanic	46	3.2	7,813	4.5	29	3.3	17	3.1	9,398	5.4
	Multiracial, Non-Hispanic	37	2.6	7,145	4.1	19	2.1	18	3.3	9,400	5.4
	Hispanic	107	7.5	12,543	7.2	78	8.8	29	5.4	8,122	4.7

Table 1A. Percentage of ACBS adult (aged ≥ 18) respondents, non-respondents, and BRFSS-eligible asthma respondents by demographic groups and state/territory											
		Eligible Asthma Respondents				Non-Respondents		Respondents			
State	Demographics	Sample size (unweighted)	Percent (unweighted)	Weighted total	Percent (weighted)	Sample size (unweighted)	Percent (unweighted)	Sample size (unweighted)	Percent (unweighted)	Weighted total	Percent (weighted)
New Hampshire	Male	337	34.2	76,497	40.2	129	33.7	208	34.6	76,925	40.1
	Female	647	65.8	113,949	59.8	254	66.3	393	65.4	114,979	59.9
	Age 18 to 24	30	3.1	20,318	10.8	13	3.5	17	2.9	23,289	12.2
	Age 25 to 34	60	6.2	35,368	18.8	29	7.8	31	5.3	33,855	17.8
	Age 35 to 44	107	11.1	39,275	20.9	50	13.4	57	9.7	39,275	20.6
	Age 45 to 54	111	11.5	25,469	13.5	45	12	66	11.2	25,815	13.6
	Age 55 to 64	211	21.9	34,084	18.1	83	22.2	128	21.7	34,231	18
	Age 65 or older	445	46.2	33,811	18	154	41.2	291	49.3	33,882	17.8
	White - Non-Hispanic	906	93.7	163,912	87.3	341	91.4	565	95.1	169,115	90
	Black - Non-Hispanic	8	0.8	4,325	2.3	3	0.8	5	0.8	5,727	3
	Other race only, Non-Hispanic	18	1.9	5,658	3	8	2.1	10	1.7	6,565	3.5
	Multiracial, Non-Hispanic	16	1.7	5,327	2.8	9	2.4	7	1.2	2,986	1.6
	Hispanic	19	2	8,436	4.5	12	3.2	7	1.2	3,571	1.9
New Jersey	Male	451	41.1	354,220	38.8	209	40.5	242	41.7	354,082	38.8
	Female	646	58.9	557,719	61.2	307	59.5	339	58.3	557,893	61.2
	Age 18 to 24	97	9.1	149,221	16.9	44	8.8	53	9.3	149,142	16.7
	Age 25 to 34	127	11.9	135,693	15.3	65	13	62	10.9	135,704	15.2
	Age 35 to 44	158	14.8	136,424	15.4	92	18.4	66	11.6	139,769	15.7
	Age 45 to 54	169	15.8	160,841	18.2	79	15.8	90	15.8	157,499	17.7
	Age 55 to 64	186	17.4	134,488	15.2	88	17.6	98	17.2	134,297	15.1
	Age 65 or older	332	31.1	168,425	19	132	26.4	200	35.1	175,817	19.7
	White - Non-Hispanic	667	62.8	456,142	51.6	280	55.9	387	69	535,714	60.1
	Black - Non-Hispanic	132	12.4	135,151	15.3	69	13.8	63	11.2	103,320	11.6
	Other race only, Non-Hispanic	65	6.1	95,450	10.8	35	7	30	5.3	105,561	11.8
	Multiracial, Non-Hispanic	26	2.4	19,801	2.2	15	3	11	2	20,557	2.3
	Hispanic	172	16.2	177,920	20.1	102	20.4	70	12.5	126,080	14.1
New York	Male	319	38.6	850,052	37.1	119	37.5	200	39.2	850,052	37.1
	Female	508	61.4	1,443,372	62.9	198	62.5	310	60.8	1,443,372	62.9
	Age 18 to 24	88	10.8	403,623	17.9	35	11.4	53	10.5	424,416	18.7
	Age 25 to 34	122	15	420,946	18.7	49	15.9	73	14.5	400,153	17.7
	Age 35 to 44	98	12.1	291,109	12.9	46	14.9	52	10.3	270,482	11.9
	Age 45 to 54	133	16.4	302,442	13.4	52	16.9	81	16.1	333,514	14.7
	Age 55 to 64	153	18.8	361,074	16	52	16.9	101	20	361,074	15.9
	Age 65 or older	218	26.8	474,549	21.1	74	24	144	28.6	475,362	21
	White - Non-Hispanic	490	60.6	1,170,116	51.7	174	56.3	316	63.2	1,250,566	55.2
	Black - Non-Hispanic	99	12.2	364,838	16.1	40	12.9	59	11.8	311,066	13.7
	Other race only, Non-Hispanic	40	4.9	188,938	8.4	16	5.2	24	4.8	216,223	9.5
	Multiracial, Non-Hispanic	26	3.2	65,196	2.9	9	2.9	17	3.4	75,258	3.3
	Hispanic	154	19	473,607	20.9	70	22.7	84	16.8	411,412	18.2

Table 1A. Percentage of ACBS adult (aged ≥ 18) respondents, non-respondents, and BRFSS-eligible asthma respondents by demographic groups and state/territory											
		Eligible Asthma Respondents				Non-Respondents		Respondents			
State	Demographics	Sample size (unweighted)	Percent (unweighted)	Weighted total	Percent (weighted)	Sample size (unweighted)	Percent (unweighted)	Sample size (unweighted)	Percent (unweighted)	Weighted total	Percent (weighted)
Ohio	Male	723	37.4	549,934	38.9	504	37.7	219	36.6	550,012	38.8
	Female	1,211	62.6	865,091	61.1	832	62.3	379	63.4	866,217	61.2
	Age 18 to 24	112	5.9	197,202	14.2	72	5.5	40	6.8	197,210	14.2
	Age 25 to 34	212	11.1	256,849	18.5	151	11.5	61	10.4	256,869	18.5
	Age 35 to 44	235	12.3	223,415	16.1	183	13.9	52	8.8	224,472	16.2
	Age 45 to 54	308	16.2	199,161	14.3	217	16.5	91	15.5	193,638	14
	Age 55 to 64	413	21.7	227,744	16.4	275	20.9	138	23.5	231,922	16.7
	Age 65 or older	624	32.8	286,314	20.6	418	31.8	206	35	283,816	20.4
	White - Non-Hispanic	1,595	83.9	988,954	71.1	1,098	83.8	497	84.2	1,033,391	74.3
	Black - Non-Hispanic	163	8.6	235,560	16.9	118	9	45	7.6	214,989	15.5
	Other race only, Non-Hispanic	48	2.5	39,223	2.8	29	2.2	19	3.2	33,981	2.4
	Multiracial, Non-Hispanic	54	2.8	58,415	4.2	39	3	15	2.5	46,662	3.4
	Hispanic	41	2.2	69,639	5	27	2.1	14	2.4	61,173	4.4
Rhode Island	Male	315	34.3	53,002	37.1	201	35.6	114	32.1	53,002	37.1
	Female	604	65.7	89,875	62.9	363	64.4	241	67.9	89,919	62.9
	Age 18 to 24	46	5.1	18,884	13.3	30	5.4	16	4.5	15,698	11
	Age 25 to 34	102	11.2	27,120	19.1	66	11.8	36	10.2	30,306	21.3
	Age 35 to 44	104	11.4	22,491	15.8	74	13.3	30	8.5	22,682	15.9
	Age 45 to 54	132	14.5	20,880	14.7	79	14.2	53	15	20,880	14.7
	Age 55 to 64	215	23.6	24,834	17.5	127	22.8	88	24.9	24,962	17.5
	Age 65 or older	311	34.2	28,013	19.7	181	32.5	130	36.8	27,951	19.6
	White - Non-Hispanic	705	78.7	99,451	71.7	415	75.6	290	83.6	104,996	76.2
	Black - Non-Hispanic	37	4.1	7,749	5.6	25	4.6	12	3.5	4,999	3.6
	Other race only, Non-Hispanic	25	2.8	6,764	4.9	15	2.7	10	2.9	11,048	8
	Multiracial, Non-Hispanic	12	1.3	2,176	1.6	8	1.5	4	1.2	3,363	2.4
	Hispanic	117	13.1	22,474	16.2	86	15.7	31	8.9	13,394	9.7
Texas	Male	484	38.5	997,768	42.1	365	38.2	119	39.5	997,768	42.1
	Female	773	61.5	1,374,159	57.9	591	61.8	182	60.5	1,374,159	57.9
	Age 18 to 24	105	8.5	375,843	16	81	8.7	24	8	326,786	14
	Age 25 to 34	151	12.2	340,435	14.5	117	12.5	34	11.4	389,492	16.7
	Age 35 to 44	168	13.6	320,632	13.7	141	15.1	27	9	236,119	10.1
	Age 45 to 54	186	15.1	392,351	16.8	144	15.4	42	14	454,978	19.5
	Age 55 to 64	202	16.4	374,312	16	141	15.1	61	20.4	375,653	16.1
	Age 65 or older	422	34.2	538,277	23	311	33.3	111	37.1	545,684	23.4
	White - Non-Hispanic	705	58.8	1,075,152	47.6	523	57.7	182	62.5	1,081,945	46.5
	Black - Non-Hispanic	122	10.2	321,189	14.2	86	9.5	36	12.4	376,425	16.2
	Other race only, Non-Hispanic	33	2.8	74,422	3.3	25	2.8	8	2.7	98,909	4.3
	Multiracial, Non-Hispanic	37	3.1	92,379	4.1	26	2.9	11	3.8	113,893	4.9
	Hispanic	301	25.1	696,002	30.8	247	27.2	54	18.6	653,403	28.1

Table 1A. Percentage of ACBS adult (aged ≥ 18) respondents, non-respondents, and BRFSS-eligible asthma respondents by demographic groups and state/territory											
		Eligible Asthma Respondents				Non-Respondents		Respondents			
State	Demographics	Sample size (unweighted)	Percent (unweighted)	Weighted total	Percent (weighted)	Sample size (unweighted)	Percent (unweighted)	Sample size (unweighted)	Percent (unweighted)	Weighted total	Percent (weighted)
Utah	Male	732	43.9	169,137	43.3	424	41.6	308	47.5	168,973	43.2
	Female	936	56.1	221,323	56.7	595	58.4	341	52.5	221,747	56.8
	Age 18 to 24	172	10.4	71,553	18.4	110	10.9	62	9.6	71,733	18.4
	Age 25 to 34	269	16.3	82,834	21.3	174	17.3	95	14.7	83,567	21.5
	Age 35 to 44	271	16.4	65,974	17	175	17.4	96	14.9	66,378	17
	Age 45 to 54	261	15.8	60,714	15.6	166	16.5	95	14.7	62,261	16
	Age 55 to 64	230	13.9	48,053	12.4	135	13.4	95	14.7	47,253	12.1
	Age 65 or older	451	27.3	58,924	15.2	248	24.6	203	31.4	58,325	15
	White - Non-Hispanic	1,392	85	301,069	78.4	826	82.7	566	88.6	324,867	84.6
	Black - Non-Hispanic	13	0.8	6,519	1.7	10	1	3	0.5	5,281	1.4
	Other race only, Non-Hispanic	49	3	18,889	4.9	35	3.5	14	2.2	15,242	4
	Multiracial, Non-Hispanic	31	1.9	13,963	3.6	21	2.1	10	1.6	8,866	2.3
	Hispanic	153	9.3	43,461	11.3	107	10.7	46	7.2	29,610	7.7
Vermont	Male	454	37	36,523	41.3	181	37.9	273	36.4	36,523	41.3
	Female	773	63	51,929	58.7	296	62.1	477	63.6	51,996	58.7
	Age 18 to 24	45	3.7	9,967	11.4	17	3.6	28	3.8	9,967	11.4
	Age 25 to 34	130	10.7	15,062	17.2	54	11.5	76	10.3	15,062	17.2
	Age 35 to 44	177	14.6	14,489	16.6	82	17.4	95	12.8	14,489	16.5
	Age 45 to 54	168	13.9	12,020	13.7	82	17.4	86	11.6	11,780	13.5
	Age 55 to 64	252	20.8	14,791	16.9	86	18.3	166	22.4	15,142	17.3
	Age 65 or older	439	36.3	21,160	24.2	149	31.7	290	39.1	21,144	24.1
	White - Non-Hispanic	1,107	91.4	77,546	88.5	430	91.1	677	91.6	77,925	89.4
	Black - Non-Hispanic	16	1.3	2,167	2.5	6	1.3	10	1.4	1,876	2.2
	Other race only, Non-Hispanic	33	2.7	2,785	3.2	15	3.2	18	2.4	2,083	2.4
	Multiracial, Non-Hispanic	25	2.1	2,319	2.6	10	2.1	15	2	2,218	2.5
	Hispanic	30	2.5	2,845	3.2	11	2.3	19	2.6	3,095	3.5
Wisconsin	Male	686	37.8	277,056	40.5	446	37.3	240	38.8	277,056	40.5
	Female	1,130	62.2	406,530	59.5	751	62.7	379	61.2	406,530	59.5
	Age 18 to 24	89	5	93,444	13.9	58	4.9	31	5	93,444	13.7
	Age 25 to 34	134	7.5	101,488	15.1	88	7.5	46	7.4	101,488	14.8
	Age 35 to 44	205	11.4	121,590	18	132	11.3	73	11.8	121,590	17.8
	Age 45 to 54	254	14.2	98,502	14.6	161	13.7	93	15	103,739	15.2
	Age 55 to 64	356	19.9	110,534	16.4	231	19.7	125	20.2	113,032	16.5
	Age 65 or older	753	42	148,567	22	502	42.8	251	40.5	150,294	22
	White - Non-Hispanic	1,507	84.5	546,415	81	966	82.4	541	88.4	594,090	87.4
	Black - Non-Hispanic	122	6.8	53,831	8	86	7.3	36	5.9	46,139	6.8
	Other race only, Non-Hispanic	35	2	17,820	2.6	25	2.1	10	1.6	12,975	1.9
	Multiracial, Non-Hispanic	37	2.1	19,346	2.9	30	2.6	7	1.1	9,929	1.5
	Hispanic	83	4.7	37,532	5.6	65	5.5	18	2.9	16,312	2.4

Table 1A. Percentage of ACBS adult (aged ≥ 18) respondents, non-respondents, and BRFSS-eligible asthma respondents by demographic groups and state/territory											
		Eligible Asthma Respondents				Non-Respondents		Respondents			
State	Demographics	Sample size (unweighted)	Percent (unweighted)	Weighted total	Percent (weighted)	Sample size (unweighted)	Percent (unweighted)	Sample size (unweighted)	Percent (unweighted)	Weighted total	Percent (weighted)
Puerto Rico	Male	256	26.6	209,245	36.9	150	30.5	106	22.6	209,245	36.9
	Female	705	73.4	357,374	63.1	341	69.5	364	77.4	357,374	63.1
	Age 18 to 24	58	6.1	64,987	11.5	35	7.2	23	4.9	64,987	11.5
	Age 25 to 34	150	15.7	105,663	18.7	95	19.4	55	11.8	105,663	18.7
	Age 35 to 44	144	15	82,166	14.5	90	18.4	54	11.5	82,166	14.5
	Age 45 to 54	159	16.6	81,912	14.5	62	12.7	97	20.7	81,999	14.5
	Age 55 to 64	204	21.3	98,488	17.4	88	18	116	24.8	98,488	17.4
	Age 65 or older	242	25.3	131,835	23.3	119	24.3	123	26.3	131,835	23.3
	White - Non-Hispanic	7	0.7	2,885	0.5	3	0.6	4	0.9	3,231	0.6
	Black - Non-Hispanic	2	0.2	977	0.2	1	0.2	1	0.2	999	0.2
	Hispanic	952	99.1	562,757	99.3	487	99.2	465	98.9	562,389	99.3
Notes:											
*State included only in version 1 of sample split: New York											

Table 1B. Percentage of ACBS child (aged 0-17 years) respondents, non-respondents, and BRFSS-eligible asthma respondents by demographic groups and state/territory											
		Eligible Asthma Respondents				Non-Respondents		Respondents			
State	Demographics	Sample size (unweighted)	Percent (unweighted)	Weighted total	Percent (weighted)	Sample size (unweighted)	Percent (unweighted)	Sample size (unweighted)	Percent (unweighted)	Weighted total	Percent (weighted)
States/areas total	Boy	872	58.5	924,966	53.9	459	59.3	413	57.7	936,337	54.2
	Girl	618	41.5	790,225	46.1	315	40.7	303	42.3	789,880	45.8
	Age 0 to 4	121	9.2	223,480	14.9	58	8.9	63	9.5	174,670	10.9
	Age 5 to 9	305	23.2	455,021	30.3	150	23	155	23.3	517,200	32.1
	Age 10 to 14	456	34.6	422,759	28.1	223	34.2	233	35.1	608,928	37.8
	Age 15 to 17	435	33	401,359	26.7	222	34	213	32.1	308,960	19.2
	White only	1,079	73.6	1,051,478	64.2	562	74.6	517	72.5	1,205,409	74
	Black or African American only	192	13.1	324,882	19.8	95	12.6	97	13.6	250,822	15.4
	Other Races and Multiracial	195	13.3	261,445	16	96	12.7	99	13.9	173,150	10.6
Connecticut	Boy	126	59.7	39,012	53.5	61	61.6	65	58	38,714	53.2
	Girl	85	40.3	33,913	46.5	38	38.4	47	42	34,110	46.8
	Age 0 to 4	16	8.2	5,734	8.4	9	10.6	7	6.4	2,455	3.5
	Age 5 to 9	43	22.1	19,536	28.6	18	21.2	25	22.7	20,588	29.7
	Age 10 to 14	76	39	22,906	33.5	38	44.7	38	34.5	19,229	27.8
	Age 15 to 17	60	30.8	20,104	29.4	20	23.5	40	36.4	27,015	39
	White only	151	72.9	44,295	61.3	72	74.2	79	71.8	40,660	56.9
	Black or African American only	26	12.6	15,547	21.5	11	11.3	15	13.6	17,794	24.9
	Other Races and Multiracial	30	14.5	12,444	17.2	14	14.4	16	14.5	12,963	18.2
Florida	Boy	107	55.4	290,601	67	56	56.6	51	54.3	294,594	67.4
	Girl	86	44.6	143,333	33	43	43.4	43	45.7	142,707	32.6
	Age 0 to 4	15	9.1	36,165	10.7	9	11.5	6	6.9	8,287	2.2
	Age 5 to 9	44	26.7	84,598	24.9	19	24.4	25	28.7	118,856	32.2
	Age 10 to 14	53	32.1	116,837	34.4	23	29.5	30	34.5	179,201	48.6
	Age 15 to 17	53	32.1	101,608	30	27	34.6	26	29.9	62,386	16.9
	White only	128	67.4	265,454	63.3	68	70.1	60	64.5	268,757	62
	Black or African American only	35	18.4	97,021	23.1	16	16.5	19	20.4	111,913	25.8
	Other Races and Multiracial	27	14.2	57,118	13.6	13	13.4	14	15.1	52,607	12.1

Table 1B. Percentage of ACBS child (aged 0-17 years) respondents, non-respondents, and BRFSS-eligible asthma respondents by demographic groups and state/territory											
		Eligible Asthma Respondents				Non-Respondents		Respondents			
State	Demographics	Sample size (unweighted)	Percent (unweighted)	Weighted total	Percent (weighted)	Sample size (unweighted)	Percent (unweighted)	Sample size (unweighted)	Percent (unweighted)	Weighted total	Percent (weighted)
Indiana	Boy	150	55.6	75,934	57	80	56.7	70	54.3	76,985	57.4
	Girl	120	44.4	57,327	43	61	43.3	59	45.7	57,224	42.6
	Age 0 to 4	30	12.4	21,400	17.6	13	10.5	17	14.5	24,959	20
	Age 5 to 9	53	22	38,477	31.7	28	22.6	25	21.4	36,144	28.9
	Age 10 to 14	81	33.6	38,140	31.5	44	35.5	37	31.6	41,222	33
	Age 15 to 17	77	32	23,243	19.2	39	31.5	38	32.5	22,703	18.2
	White only	191	71.3	87,827	67.2	104	74.8	87	67.4	91,407	68.1
	Black or African American only	48	17.9	21,952	16.8	24	17.3	24	18.6	15,141	11.3
	Other Races and Multiracial	29	10.8	20,952	16	11	7.9	18	14	27,660	20.6
New Jersey	Boy	100	58.8	105,508	59.5	41	58.6	59	59	109,968	60.5
	Girl	70	41.2	71,718	40.5	29	41.4	41	41	71,720	39.5
	Age 0 to 4	14	9.7	31,182	19.1	3	5.3	11	12.5	33,134	19
	Age 5 to 9	29	20	46,950	28.7	14	24.6	15	17	53,545	30.6
	Age 10 to 14	58	40	43,154	26.4	21	36.8	37	42	48,403	27.7
	Age 15 to 17	44	30.3	42,213	25.8	19	33.3	25	28.4	39,649	22.7
	White only	95	55.9	87,308	51.1	40	57.1	55	55	99,369	59.3
	Black or African American only	38	22.4	46,556	27.3	16	22.9	22	22	28,511	17
	Other Races and Multiracial	37	21.8	36,974	21.6	14	20	23	23	39,569	23.6
Texas	Boy	124	56.6	358,860	44.3	73	56.6	51	56.7	360,580	44.5
	Girl	95	43.4	450,529	55.7	56	43.4	39	43.3	450,573	55.5
	Age 0 to 4	19	10.3	120,794	16.5	8	7.6	11	13.8	98,507	12.5
	Age 5 to 9	43	23.2	242,113	33.1	26	24.8	17	21.3	262,790	33.3
	Age 10 to 14	65	35.1	181,828	24.9	35	33.3	30	37.5	300,837	38.1
	Age 15 to 17	58	31.4	186,344	25.5	36	34.3	22	27.5	126,827	16.1
	White only	141	67.8	492,938	65.1	75	61.5	66	76.7	634,448	86.3
	Black or African American only	35	16.8	141,641	18.7	24	19.7	11	12.8	73,404	10
	Other Races and Multiracial	32	15.4	122,735	16.2	23	18.9	9	10.5	27,183	3.7

Table 1B. Percentage of ACBS child (aged 0-17 years) respondents, non-respondents, and BRFSS-eligible asthma respondents by demographic groups and state/territory											
		Eligible Asthma Respondents				Non-Respondents		Respondents			
State	Demographics	Sample size (unweighted)	Percent (unweighted)	Weighted total	Percent (weighted)	Sample size (unweighted)	Percent (unweighted)	Sample size (unweighted)	Percent (unweighted)	Weighted total	Percent (weighted)
Utah	Boy	187	65.4	48,412	63.5	114	63.7	73	68.2	48,856	63.6
	Girl	99	34.6	27,807	36.5	65	36.3	34	31.8	27,971	36.4
	Age 0 to 4	16	6.3	6,546	9.7	10	6.5	6	6.1	6,414	9
	Age 5 to 9	54	21.3	20,180	29.8	32	20.8	22	22.2	22,048	31
	Age 10 to 14	77	30.4	15,963	23.6	48	31.2	29	29.3	14,773	20.8
	Age 15 to 17	106	41.9	24,965	36.9	64	41.6	42	42.4	27,821	39.2
	White only	246	87.5	63,314	84.8	154	89	92	85.2	60,639	80.1
	Black or African American only	7	2.5	1,519	2	3	1.7	4	3.7	3,446	4.6
	Other Races and Multiracial	28	10	9,804	13.1	16	9.2	12	11.1	11,587	15.3
Vermont	Boy	78	55.3	6,639	54.3	34	59.6	44	52.4	6,638	54.3
	Girl	63	44.7	5,598	45.7	23	40.4	40	47.6	5,576	45.7
	Age 0 to 4	11	8.3	1,660	14.3	6	12	5	6	915	7.6
	Age 5 to 9	39	29.3	3,167	27.2	13	26	26	31.3	3,229	27
	Age 10 to 14	46	34.6	3,931	33.8	14	28	32	38.6	5,263	44
	Age 15 to 17	37	27.8	2,881	24.8	17	34	20	24.1	2,558	21.4
	White only	127	89.4	10,343	83.4	49	89.1	78	89.7	10,128	82.2
	Black or African American only	3	2.1	646	5.2	1	1.8	2	2.3	613	5
	Other Races and Multiracial	12	8.5	1,418	11.4	5	9.1	7	8	1,581	12.8

Notes:
This table contains only states included in public-release file

Table 2A. Estimated percentage of current asthma status among adults (≥18 years) ever diagnosed with asthma by state/territory								
<i>State</i>	<i>ACBS Sample size</i>	<i>Current Prevalence (weighted percent)</i>	<i>Standard Error</i>	<i>CI ACBS</i>	<i>BRFSS Sample size</i>	<i>Current Prevalence (weighted percent)</i>	<i>Standard Error</i>	<i>CI BRFSS</i>
States/areas total	12,602	67.1	1.02	(65.0 - 69.0)	34,352	67.4	0.57	(66.2 - 68.5)
Arizona	583	66.3	3.07	(60.0 - 72.0)	1,719	67.8	1.77	(64.2 - 71.1)
California	500	60.1	3.25	(53.6 - 66.2)	1,405	61.4	1.95	(57.5 - 65.1)
Connecticut	670	69.6	2.71	(64.1 - 74.6)	1,425	67.9	1.95	(64.0 - 71.6)
Florida	562	67.2	4.05	(58.8 - 74.6)	1,526	68.8	2.72	(63.3 - 73.9)
Georgia	423	63.4	3.7	(55.9 - 70.3)	1,014	65.9	2.28	(61.3 - 70.2)
Hawaii	289	60.3	4.88	(50.5 - 69.4)	1,173	63.5	2.13	(59.2 - 67.6)
Indiana	738	72.1	2.18	(67.7 - 76.2)	1,596	71.8	1.47	(68.8 - 74.5)
Iowa	401	69.2	3.08	(62.9 - 74.9)	1,077	70	1.87	(66.2 - 73.6)
Kansas	314	77.2	3.22	(70.3 - 82.9)	1,251	70.7	1.75	(67.2 - 74.0)
Kentucky	301	70.2	4.31	(61.1 - 77.9)	724	75.5	2.63	(70.0 - 80.3)
Maine	526	70.8	3.25	(64.0 - 76.7)	2,040	72.6	1.47	(69.6 - 75.4)
Massachusetts	335	76.5	3.13	(69.8 - 82.1)	1,507	70.5	1.77	(66.9 - 73.9)
Michigan	747	65.5	2.61	(60.2 - 70.4)	1,506	67.1	1.8	(63.5 - 70.6)
Minnesota	612	77	2.48	(71.7 - 81.5)	1,670	73	1.72	(69.5 - 76.2)
Missouri	277	75.5	3.64	(67.7 - 81.9)	965	72.1	2.04	(67.9 - 75.9)
Nebraska	470	77.9	2.62	(72.4 - 82.6)	1,405	72.9	1.67	(69.5 - 76.1)
New Hampshire	546	67.6	3.36	(60.8 - 73.9)	962	69.8	2.35	(65.0 - 74.2)
New Jersey	476	63.5	3.12	(57.2 - 69.4)	1,069	69.4	2.01	(65.3 - 73.2)
New York	423	66.5	3.59	(59.1 - 73.1)	803	67.2	2.51	(62.1 - 71.9)
Ohio	531	71	3.03	(64.7 - 76.6)	1,871	72.5	1.56	(69.3 - 75.4)
Rhode Island	318	70.9	4.66	(61.0 - 79.1)	901	75.2	2.15	(70.7 - 79.1)
Texas	278	65.3	5.54	(53.8 - 75.2)	1,222	61.1	2.4	(56.3 - 65.6)
Utah	603	72.1	2.46	(67.0 - 76.6)	1,613	69.6	1.51	(66.5 - 72.5)
Vermont	667	65.3	2.53	(60.2 - 70.1)	1,185	68.1	1.97	(64.1 - 71.8)
Wisconsin	573	73.5	2.58	(68.2 - 78.3)	1,762	74.1	1.47	(71.1 - 76.9)
Puerto Rico	439	64	3.19	(57.6 - 70.0)	961	66.7	2.02	(62.7 - 70.5)
Notes:								
This table contains only states included in public-release file.								

Table 2B. Estimated percentage of current asthma status among children (0-17 years) ever diagnosed with asthma by state/territory								
<i>State</i>	<i>ACBS Sample size</i>	<i>Current Prevalence (weighted percent)</i>	<i>Standard Error</i>	<i>CI ACBS</i>	<i>BRFSS Sample size</i>	<i>Current Prevalence (weighted percent)</i>	<i>Standard Error</i>	<i>CI BRFSS</i>
States/areas total	604	62.9	5.25	(52.2 - 72.5)	1,472	65.7	3.74	(58.1 - 72.6)
Connecticut	90	69.9	6.87	(55.0 - 81.5)	212	71.5	4.43	(62.1 - 79.3)
Florida	77	47.6	9.3	(30.4 - 65.4)	190	56.3	7.14	(42.2 - 69.5)
Indiana	114	68	6.14	(55.0 - 78.7)	267	74	3.61	(66.3 - 80.4)
New Jersey	75	72.8	7.08	(57.0 - 84.4)	173	67.6	6.1	(54.7 - 78.2)
Texas	79	65.5	9.32	(45.8 - 81.0)	212	67.5	6.8	(53.1 - 79.2)
Utah	95	84.3	4.5	(73.3 - 91.3)	279	78.4	3.05	(71.8 - 83.8)
Vermont	74	69	7.31	(53.2 - 81.3)	139	66.8	5.25	(55.9 - 76.2)
Notes:	This table contains only states included in public-release file							