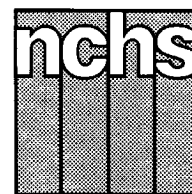


Monthly Vital Statistics Report



Provisional Data From the CENTERS FOR DISEASE CONTROL AND PREVENTION/National Center for Health Statistics

Births, Marriages, Divorces, and Deaths for April 1994

Mortality Surveillance System pages 4-7
Diabetes mellitus: 45-74 years of age by race and sex
State Maps pages 8 and 9
Diabetes mellitus by sex

Births

According to provisional reports, an estimated 302,000 births occurred in the United States during April 1994. This was an 8-percent decrease from the provisional number of births reported for April 1993 (328,000). The birth rate, 14.1 live births per 1,000 population, was 9 percent lower than the rate of 15.5 for April 1993. The fertility rate, 62.0 live births per 1,000 women aged 15-44 years, was 8 percent lower than the comparable rate for April 1993 (67.5). The seasonally adjusted fertility rate (63.6) was also 8 percent lower than the comparable rate for April 1993 (69.1).

During the first 4 months of 1994, an estimated 1,301,000 births occurred, a 1-percent decrease from the 1,320,000 reported for the first 4 months of 1993. The birth rate for this period decreased by 3 percent from 15.6 in 1993 to 15.2 in 1994. The fertility rate for January-April 1994 was 66.8, 2 percent lower than the rate for the comparable period of 1993 (68.0).

An estimated 4,020,000 live births occurred in the 12-month period ending with April 1994, a decline of 1 percent from the 4,075,000 births reported for the same period a year earlier. The birth rate of 15.5 was 3 percent lower than the rate of 15.9 for the preceding 12 months. The

Provisional Vital Statistics for the United States

[Rates for infant deaths are deaths under 1 year per 1,000 live births; fertility rates are live births per 1,000 women aged 15-44 years; all other rates per 1,000 total population. Data are subject to monthly reporting variation; see Technical notes]

Item	April				January-April				12 months ending with April				
	Number		Rate		Number		Rate		Number		Rate		
	1994	1993	1994	1993	1994	1993	1994	1993	1994	1993	1994	1993	1992
Live births	302,000	328,000	14.1	15.5	1,301,000	1,320,000	15.2	15.6	4,020,000	4,075,000	15.5	15.9	16.3
Fertility rate	62.0	67.5	66.8	68.0	68.0	69.0	69.7
Deaths	182,000	196,000	8.5	9.3	810,000	798,000	9.5	9.4	2,280,000	2,207,000	8.8	8.6	8.6
Infant deaths	2,500	2,800	7.9	8.6	10,600	11,500	8.1	8.6	32,400	33,700	8.2	8.3	8.8
Natural increase	120,000	132,000	5.6	6.2	491,000	522,000	5.7	6.2	1,740,000	1,868,000	6.7	7.3	7.7
Marriages	175,000	174,000	8.3	8.3	585,000	589,000	7.0	7.0	2,330,000	2,352,000	9.0	9.2	9.4
Divorces	99,000	98,000	4.6	4.6	389,000	390,000	4.6	4.6	1,186,000	1,203,000	4.6	4.7	4.8
Population base (in millions)	260.0	257.2	258.9	256.1	253.2

NOTES: Figures include revisions received from the States. Twelve-month figures for the current year reflect revisions received for previous months, and figures for earlier years may differ from those previously published.



U.S. DEPARTMENT OF HEALTH AND HUMAN SERVICES
Public Health Service
Centers for Disease Control and Prevention
National Center for Health Statistics



fertility rate for the most recent 12-month period was 68.0, 1 percent lower than the rate for the 12 months ending with April 1993 (69.0). These lower rates continue the generally downward trend observed since early 1991.

Natural increase

As a result of natural increase, the excess of births over deaths, an estimated 120,000 people or 5.6 persons per 1,000 population were added to the population during April 1994.

For the 12-month period ending with April 1994, 1,740,000 persons were added to the population. This represented a rate of natural increase of 6.7, 8 percent lower than the rate of 7.3 for the preceding 12-month period. The decline in the rate of natural increase was due to a decrease in the birth rate and a rise in the death rate.

Marriages

There were an estimated 175,000 marriages performed in April 1994 compared with 174,000 in April a year earlier. The marriage rate per 1,000 population for April was 8.3 in 1993 and 1994.

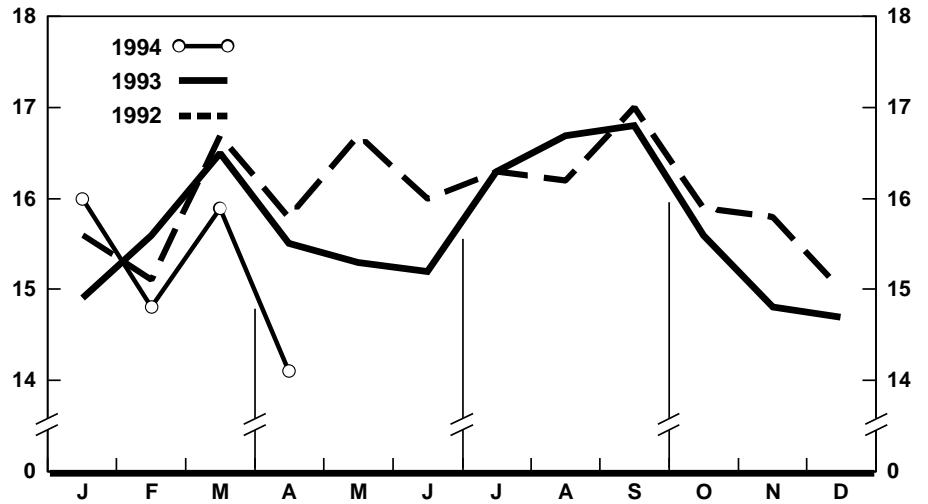
Despite the slight increase for April, the cumulative number of marriages for January–April was 1 percent lower in 1994 (585,000) than in 1993 (589,000). The marriage rate for the 4-month period was 7.0 for both years.

The number of marriages for the 12-month period ending with April 1994 (2,330,000) was 1 percent lower than for the same period a year earlier (2,352,000). The marriage rate for the current 12-month period was 9.0, 2-percent lower than the rate for the preceding 12 months (9.2).

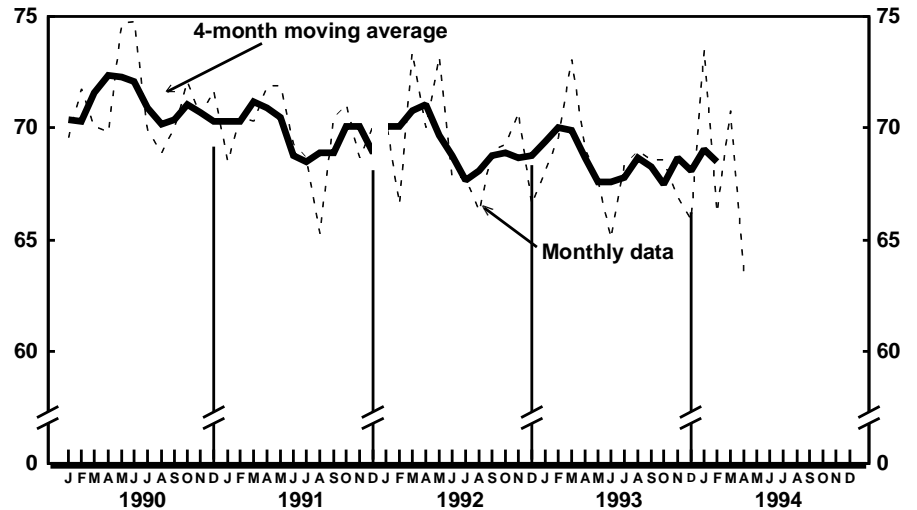
Divorces

Divorces granted in April 1994 numbered 99,000, a slight increase over the number for April 1993 (98,000). The divorce rate for April remained unchanged at 4.6 per 1,000 population.

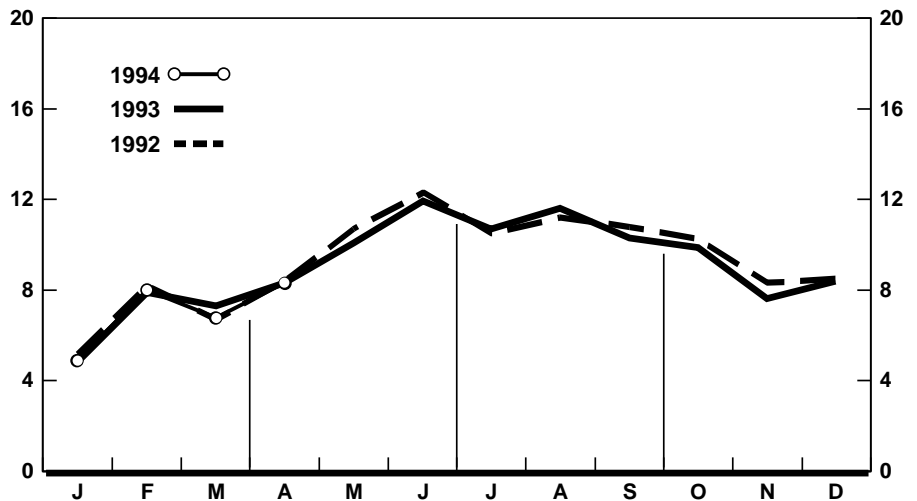
For the first 4 months of 1994, the number of divorces and the divorce rate were virtually unchanged from the comparable period in 1993. The number of divorces dropped less than 1 percent,



Provisional birth rates per 1,000 population by month: United States, 1992-94



Provisional seasonally adjusted fertility rates per 1,000 women aged 15-44 years: United States, 1990-94



Provisional marriage rates per 1,000 population by month: United States, 1992-94

1994 was 515.3 per 100,000 U.S. standard million population, 2 percent higher than the rate of 504.9 for the 12-month period ending with March 1993. Age-adjusted death rates control for changes and variations in the age composition of the population; therefore, they are better indicators than crude rates for showing changes in mortality risk over time and for showing differences between race-sex groups within the population. Among the race-sex groups, the estimated age-adjusted death rates increased for white males, white females, and black males. By age the death rate for the total population increased for the following age groups: 25–34 years, 45–54 years, 65–74 years, 75–84 years, and 85 years and over.

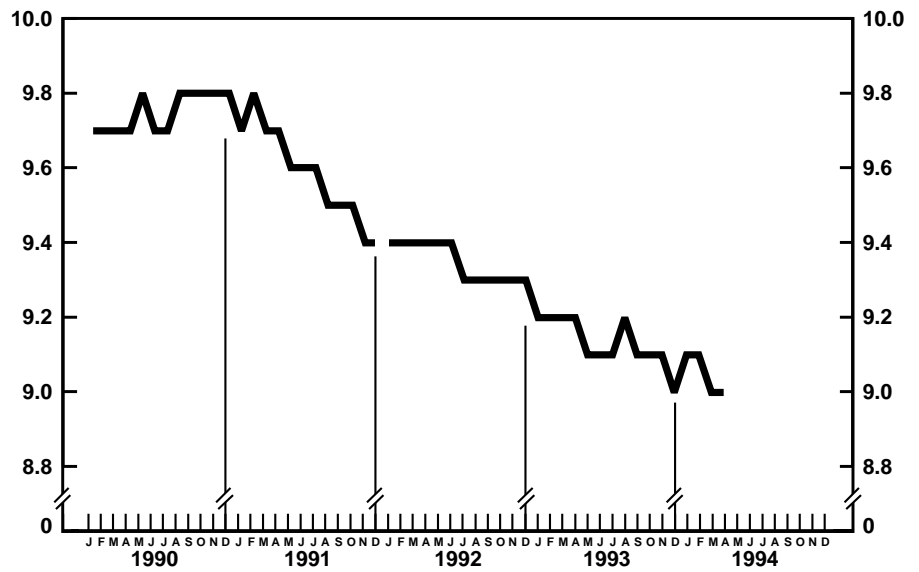
Among the major causes of death, the estimated death rate increased between the two successive 12-month periods for Diseases of heart, Cerebrovascular diseases, Accidents and adverse effects, Chronic obstructive pulmonary diseases and allied conditions, Pneumonia and influenza, Diabetes mellitus, and Human immunodeficiency virus infection.

The death rate for injury by firearms for the 12 months ending with March 1994 was 15.2 per 100,000 population, 5 percent higher than the rate of 14.5 for the comparable 12-month period a year earlier.

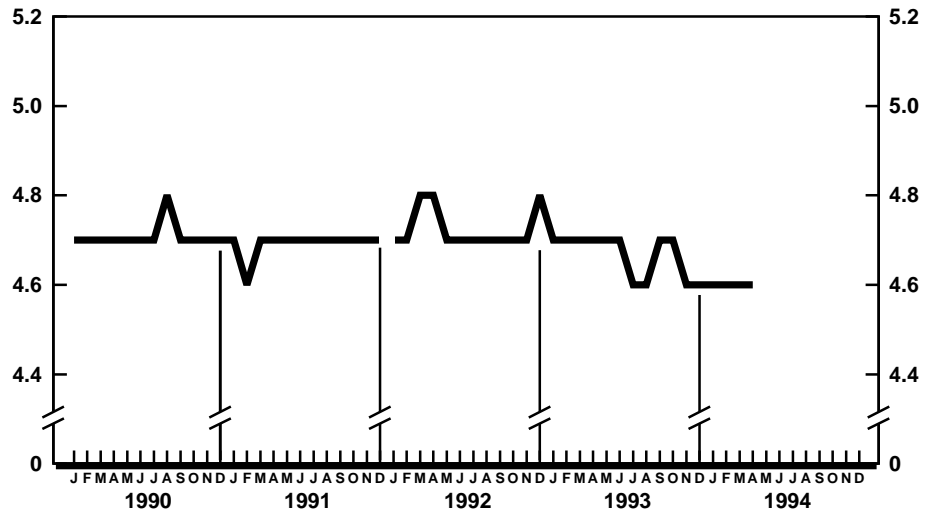
The infant mortality rate for the 12 months ending with March 1994 was 819.4 per 100,000 live births compared with a rate of 830.8 for the same 12-month period a year earlier. The change in the infant mortality rate was not statistically significant. For infants under 28 days, the 12-month rate ending with March 1994 was 534.2 compared with a rate of 523.2 for the 12-month period a year earlier. The infant mortality rate for infants 28 days to 11 months was 288.2 compared with a rate of 307.7 for the 12-month period a year earlier. The changes in the mortality rates for infants under 28 days and for those 28 days to 11 months were not statistically significant.

Mortality Surveillance System

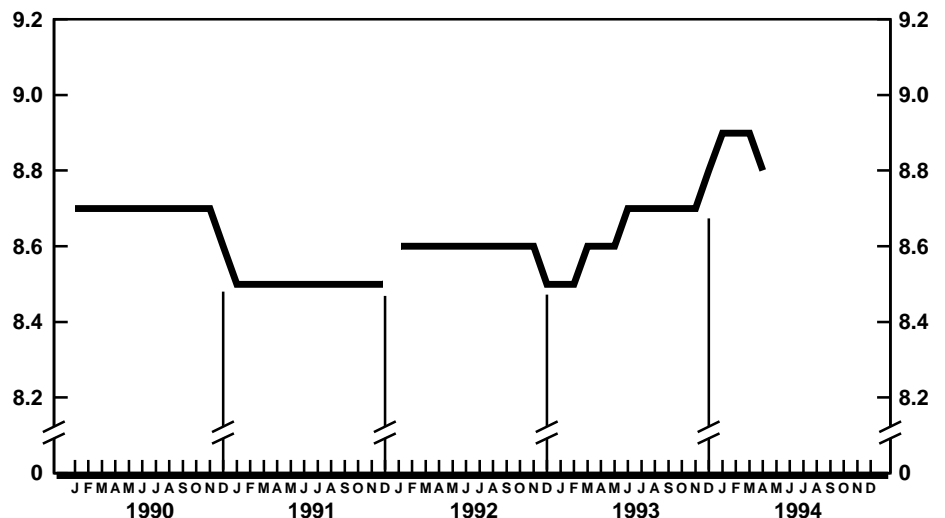
Discussed this month are recent trends in death rates for Diabetes mellitus for the black and white populations by



Provisional marriage rates per 1,000 population for successive 12-month periods ending with month indicated: United States, 1990-94



Provisional divorce rates per 1,000 population for successive 12-month periods ending with month indicated: United States, 1990-94



Provisional death rates per 1,000 population for successive 12-month periods ending with month indicated: United States, 1990-94

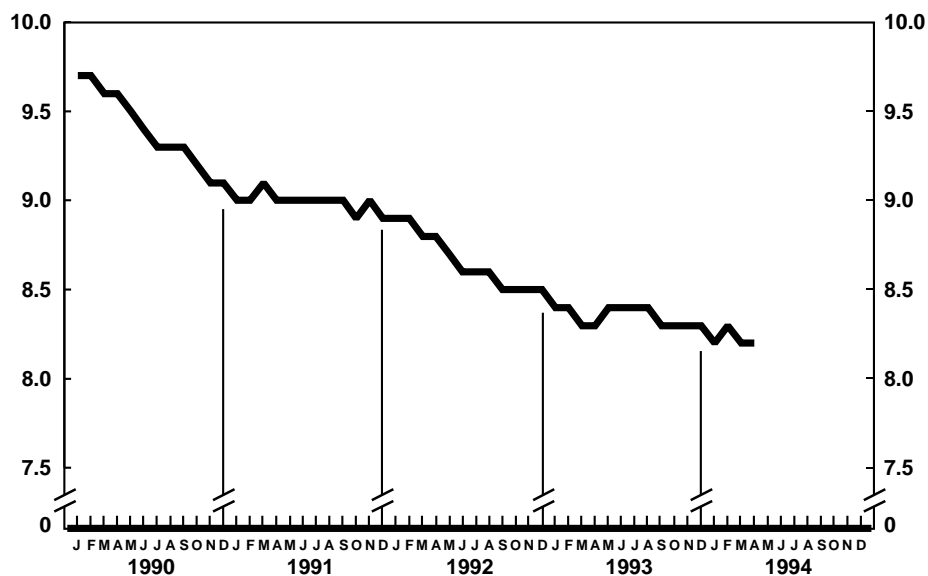
sex for ages 45–74 years. In this issue final mortality data are analyzed for data year 1991 and provisional data from January 1985 to October 1993.

In 1991, the latest year for which final mortality data are available, Diabetes mellitus was the fourth leading cause of death among black women aged 45–74 years. It accounted for 2,899 deaths or 6 percent of all deaths for this age-race-sex group. Among white women aged 45–74 years, Diabetes mellitus was the fifth leading cause of death and accounted for 9,181 deaths or 3 percent of all deaths for this age-race-sex group.

Among black men aged 45–74 years, Diabetes mellitus was the fifth leading cause of death and accounted for 2,036 deaths or 3 percent of all deaths for this age-race-sex group. Diabetes mellitus was the seventh leading cause of death for white men aged 45–74 years and accounted for 9,268 deaths or 2 percent of all deaths for this age-race-sex group.

Based on 1991 final data, the death rate for Diabetes mellitus for black men aged 45–74 years was 2.2 times the rate for white men, while the death rate for black women was 2.7 times the rate for white women of this age group. The rate for white men was 1.1 times the rate for white women, in contrast to blacks, where the rate for black women was 1.1 times the rate for black men.

Trends based on provisional data for Diabetes mellitus for these demographic groups are presented in the Mortality Surveillance System charts and accompanying text that follow.

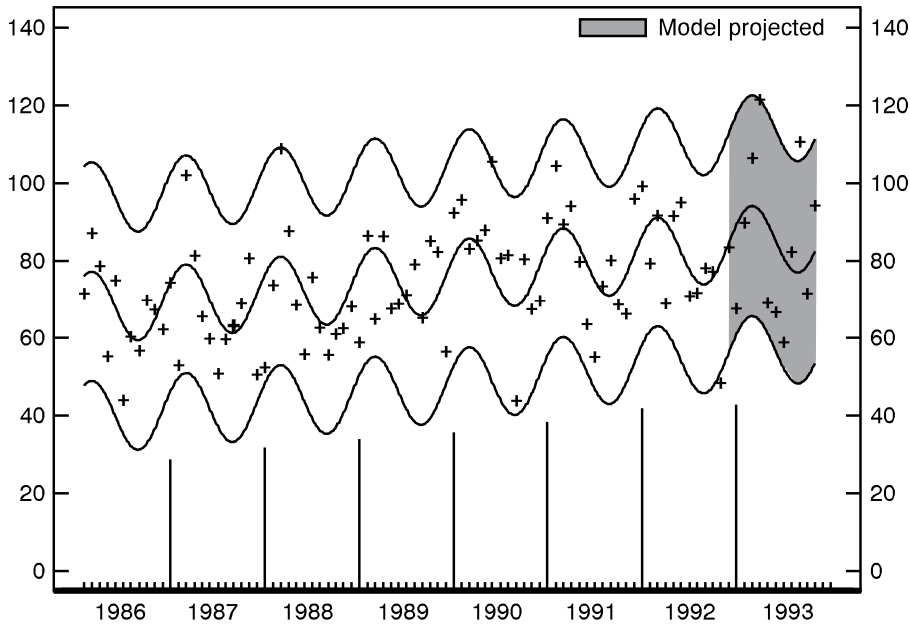


Provisional infant mortality rates per 1,000 live births for successive 12-month periods ending with month indicated: United States, 1990–94

Mortality Surveillance System charts

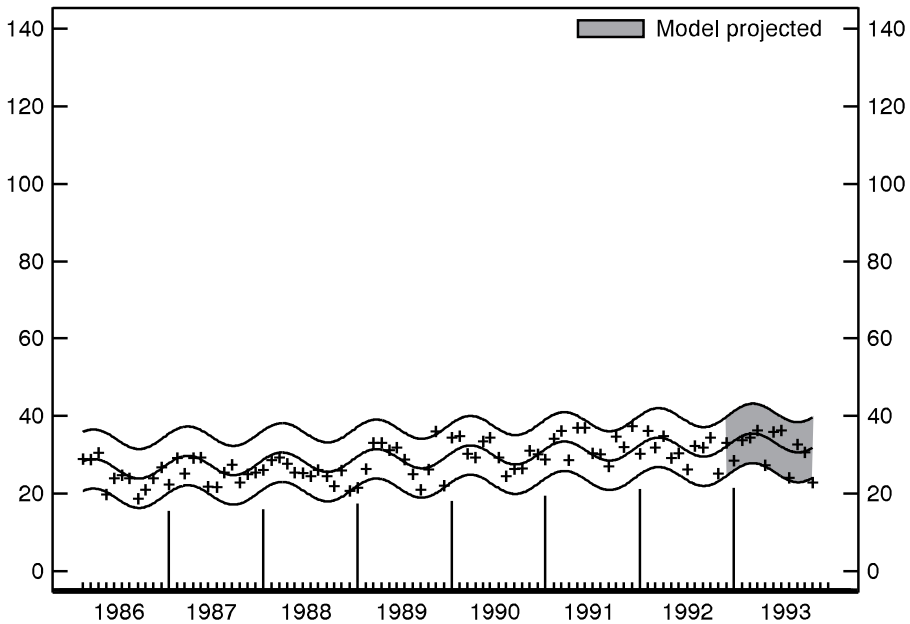
[Observed and fitted provisional monthly death rates and 95-percent prediction intervals. Model fitted using death rates for January 1985–October 1992; projected for November 1992–October 1993. See Technical notes]

Trends in mortality from Diabetes mellitus are presented in the charts below. Reduction of mortality from diabetes-related deaths (deaths from Diabetes mellitus as underlying or contributory cause) is addressed in *Healthy People 2000* (objective 17.9) (2).



Provisional death rates per 100,000 black females 45–74 years of age for Diabetes mellitus, by month: United States, 1986–93

- For the modeled period, provisional death rates increased.
- For the projection period, observed provisional monthly death rates, except for two, fell within 95-percent prediction intervals.
- Mortality shows a seasonal pattern with death rates higher in winter.



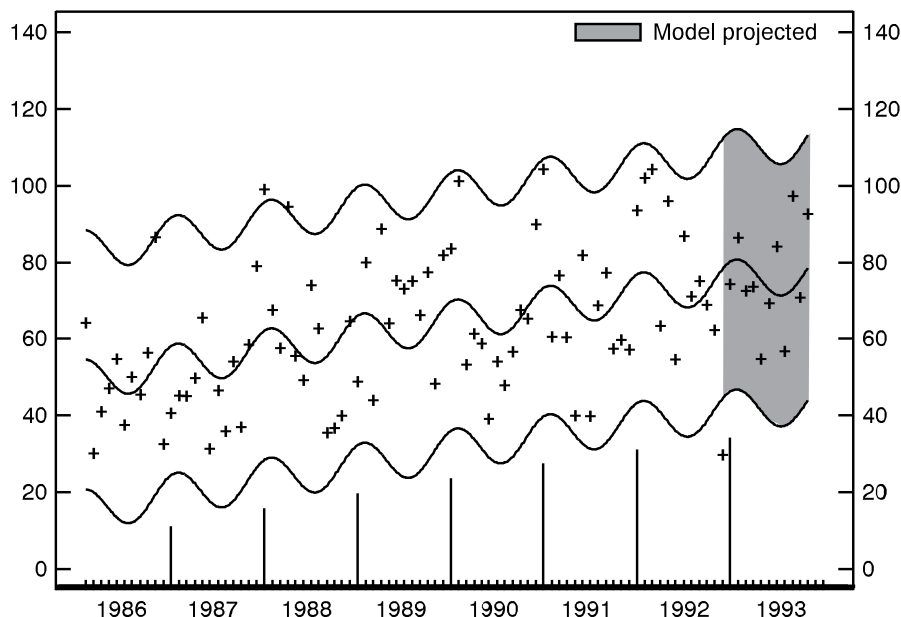
Provisional death rates per 100,000 white females 45–74 years of age for Diabetes mellitus, by month: United States, 1986–93

- For the modeled period, provisional death rates increased.
- For the projection period, observed provisional monthly death rates, except for one, fell within 95-percent prediction intervals.
- Mortality shows a seasonal pattern with death rates higher in winter.

Mortality Surveillance System charts—Con.

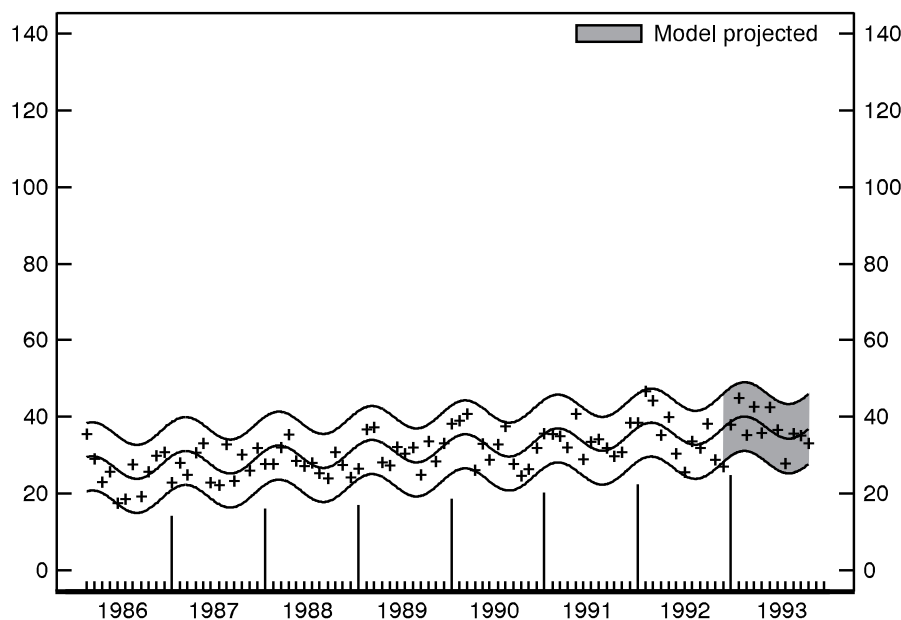
[Observed and fitted provisional monthly death rates and 95-percent prediction intervals. Model fitted using death rates for January 1985–October 1992; projected for November 1992–October 1993. See Technical notes]

Trends in mortality from Diabetes mellitus are presented in the charts below. Reduction of mortality from diabetes-related deaths (deaths from Diabetes mellitus as underlying or contributory cause) is addressed in *Healthy People 2000* (objective 17.9) (2).



Provisional death rates per 100,000 black males 45–74 years of age for Diabetes mellitus, by month: United States, 1986–93

- For the modeled period, provisional death rates increased.
- For the projection period, observed provisional monthly death rates, except for one, fell within 95-percent prediction intervals.
- Mortality shows a seasonal pattern with death rates higher in winter.

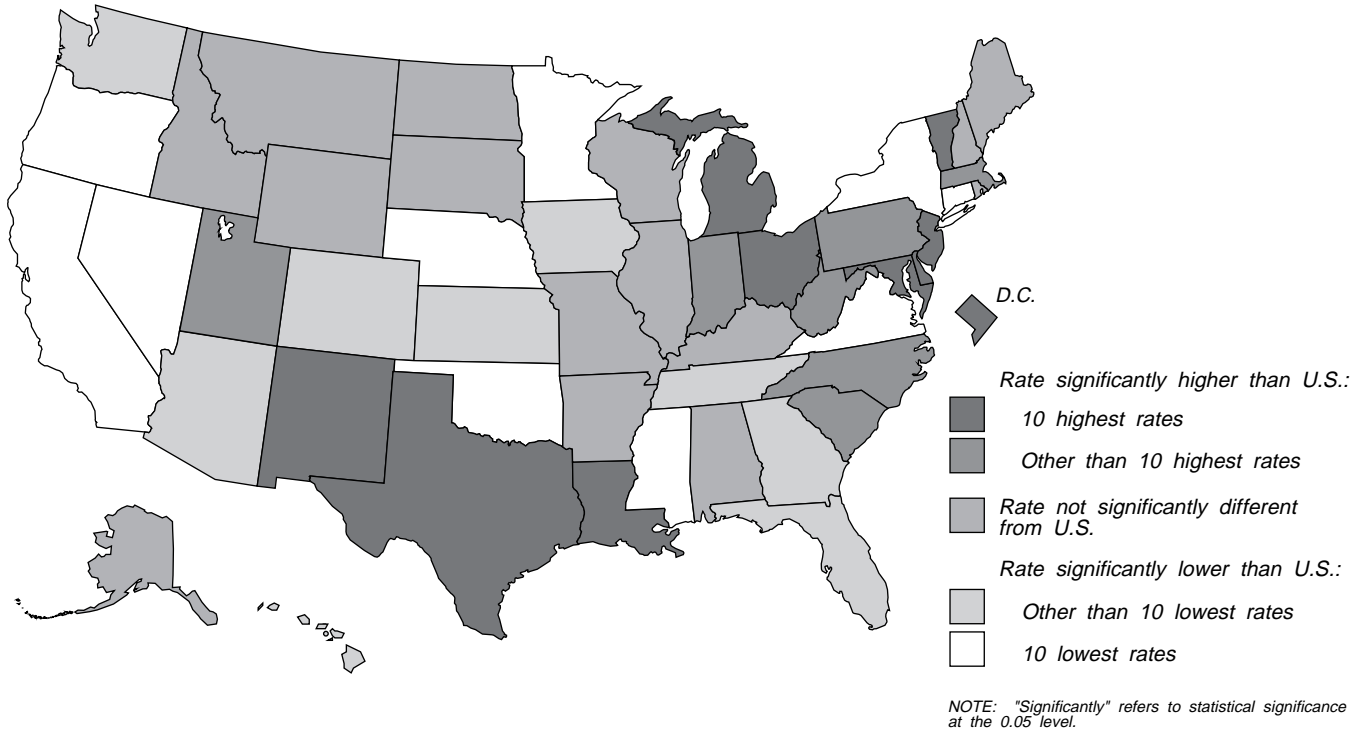


Provisional death rates per 100,000 white males 45–74 years of age for Diabetes mellitus, by month: United States, 1986–93

- For the modeled period, provisional death rates increased.
- For the projection period, observed provisional monthly death rates, except for one, fell within 95-percent prediction intervals.
- Mortality shows a seasonal pattern with death rates higher in winter.

Final 3-year total number of deaths and average annual age-adjusted death rates and 95-percent confidence limits for Diabetes mellitus for males: United States and each State, 1989–91

[Data are final by State of residence]

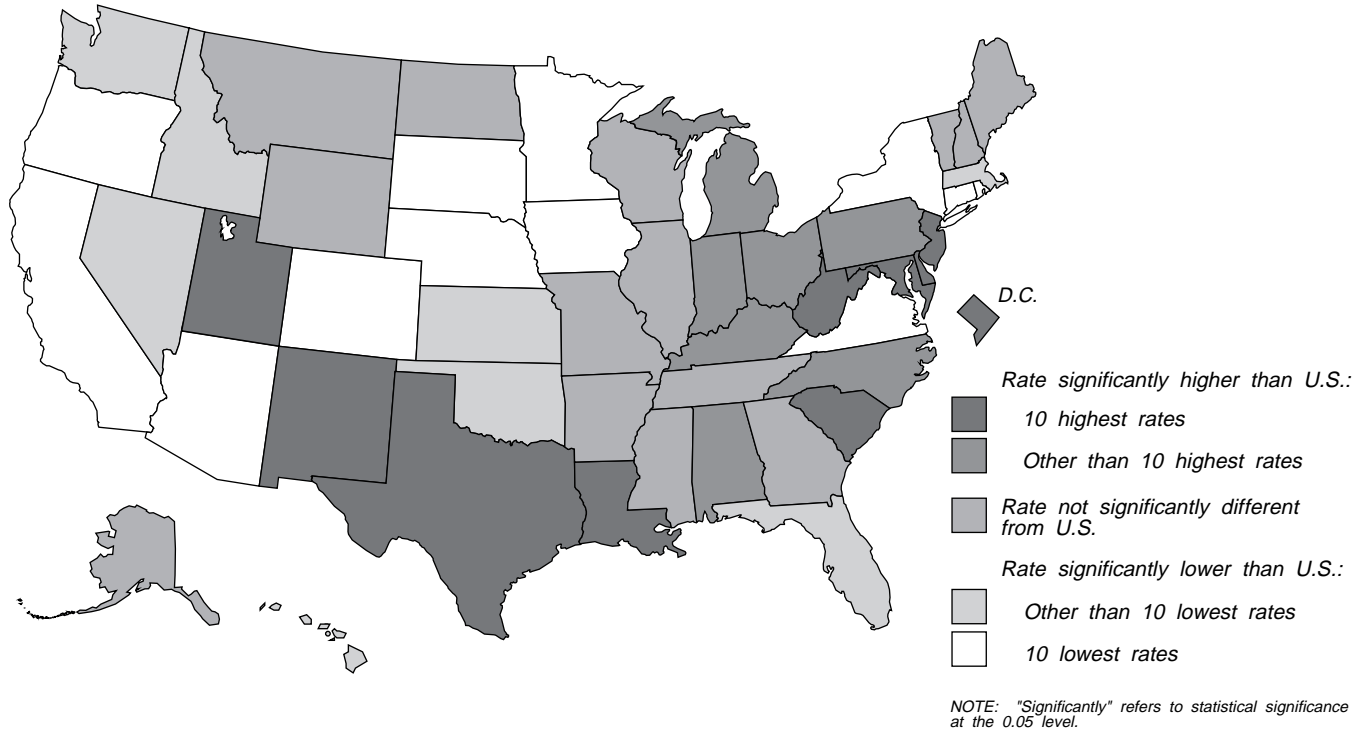


Area	Deaths, 3-year total (final)	Age-adjusted rate (final)	95-percent confidence limits		Area	Deaths, 3-year total (final)	Age-adjusted rate (final)	95-percent confidence limits	
			Lower	Upper				Lower	Upper
United States	61,092	12.4	12.3	12.5	South Atlantic—Con.				
New England					West Virginia	587	††14.4	13.2	15.6
Maine	351	13.7	12.2	15.2	North Carolina	1,732	††14.2	13.5	14.9
New Hampshire	265	12.9	11.3	14.5	South Carolina	875	††14.7	13.7	15.7
Vermont	163	†15.1	12.7	17.5	Georgia	1,188	††11.5	10.8	12.2
Massachusetts	1,668	††13.4	12.7	14.1	Florida	4,054	††11.6	11.2	12.0
Rhode Island	294	13.2	11.6	14.8	East South Central				
Connecticut	673	††9.8	9.0	10.6	Kentucky	943	13.1	12.2	14.0
Middle Atlantic					Tennessee	1,081	††11.4	10.7	12.1
New York	3,689	††10.3	10.0	10.6	Alabama	923	11.9	11.1	12.7
New Jersey	2,662	††16.5	15.9	17.1	Mississippi	473	††10.1	9.1	11.1
Pennsylvania	3,952	††14.6	14.1	15.1	West South Central				
East North Central					Arkansas	639	12.2	11.2	13.2
Ohio	3,512	††16.0	15.5	16.5	Louisiana	1,482	††20.4	19.3	21.5
Indiana	1,496	††13.7	13.0	14.4	Oklahoma	592	††9.4	8.6	10.2
Illinois	2,842	12.8	12.3	13.3	Texas	4,252	††15.0	14.5	15.5
Michigan	2,698	††15.1	14.5	15.7	Mountain				
Wisconsin	1,377	12.8	12.1	13.5	Montana	205	11.4	9.8	13.0
West North Central					Idaho	236	11.0	9.5	12.5
Minnesota	910	††9.7	9.0	10.4	Wyoming	97	11.3	9.0	13.6
Iowa	720	††10.8	9.9	11.7	Colorado	588	††10.4	9.5	11.3
Missouri	1,374	12.1	11.4	12.8	New Mexico	444	††15.7	14.2	17.2
North Dakota	209	13.1	11.1	15.1	Arizona	844	††11.2	10.4	12.0
South Dakota	180	11.2	9.4	13.0	Utah	399	††14.9	13.4	16.4
Nebraska	352	††9.9	8.8	11.0	Nevada	229	††10.1	8.8	11.4
Kansas	602	††11.1	10.1	12.1	Pacific				
South Atlantic					Washington	1,002	††10.6	9.9	11.3
Delaware	209	††16.3	14.0	18.6	Oregon	660	††10.3	9.5	11.1
Maryland	1,294	††15.4	14.5	16.3	California	4,472	††8.6	8.3	8.9
District of Columbia	208	††19.1	16.4	21.8	Alaska	70	12.5	9.5	15.5
Virginia	1,088	††10.3	9.7	10.9	Hawaii	237	†10.9	9.4	12.4

NOTES: Data are final. Rates per 100,000 U.S. standard million population; see Technical notes. The symbols † and †† denote statistical significance of the difference between the U.S. and State rates at the 0.05 and 0.01 levels, respectively. For method of computation of rates, confidence limits, and tests of statistical significance, see Technical notes.

Final 3-year total number of deaths and average annual age-adjusted death rates and 95-percent confidence limits for Diabetes mellitus for females: United States and each State, 1989–91

[Data are final by State of residence]



Area	Deaths, 3-year total (final)	Age-adjusted rate (final)	95-percent confidence limits		Area	Deaths, 3-year total (final)	Age-adjusted rate (final)	95-percent confidence limits	
			Lower	Upper				Lower	Upper
United States	82,356	11.1	11.0	11.2	South Atlantic—Con.				
New England					West Virginia	913	††15.0	13.9	16.1
Maine	447	11.6	10.3	12.9	North Carolina	2,420	††13.0	12.4	13.6
New Hampshire	342	9.9	8.7	11.1	South Carolina	1,304	††14.4	13.5	15.3
Vermont	203	11.5	9.6	13.4	Georgia	1,747	11.2	10.6	11.8
Massachusetts	2,143	††9.6	9.1	10.1	Florida	4,583	††9.5	9.2	9.8
Rhode Island	363	††9.0	7.9	10.1	East South Central				
Connecticut	864	††7.6	7.0	8.2	Kentucky	1,492	††13.2	12.4	14.0
Middle Atlantic					Tennessee	1,682	11.4	10.8	12.0
New York	4,816	††8.4	8.1	8.7	Alabama	1,566	††12.5	11.8	13.2
New Jersey	3,448	††13.8	13.3	14.3	Mississippi	862	11.9	11.0	12.8
Pennsylvania	5,681	††13.0	12.6	13.4	West South Central				
East North Central					Arkansas	918	11.5	10.6	12.4
Ohio	4,819	††13.7	13.3	14.1	Louisiana	2,282	††20.0	19.1	20.9
Indiana	2,217	††12.8	12.2	13.4	Oklahoma	956	††10.0	9.3	10.7
Illinois	3,890	11.2	10.8	11.6	Texas	5,784	††14.2	13.8	14.6
Michigan	3,482	††13.0	12.5	13.5	Mountain				
Wisconsin	1,789	11.0	10.4	11.6	Montana	299	11.9	10.3	13.5
West North Central					Idaho	275	††9.4	8.1	10.7
Minnesota	1,230	††8.5	7.9	9.1	Wyoming	117	10.2	8.1	12.3
Iowa	940	††8.5	7.8	9.2	Colorado	740	††8.8	8.1	9.5
Missouri	1,896	10.9	10.3	11.5	New Mexico	529	††14.5	13.2	15.8
North Dakota	254	10.8	9.1	12.5	Arizona	894	††9.0	8.3	9.7
South Dakota	222	††7.9	6.6	9.2	Utah	533	††14.6	13.2	16.0
Nebraska	447	††8.4	7.4	9.4	Nevada	258	††9.3	8.1	10.5
Kansas	855	††10.1	9.3	10.9	Pacific				
South Atlantic					Washington	1,236	††9.3	8.7	9.9
Delaware	373	††19.5	17.3	21.7	Oregon	799	††8.8	8.1	9.5
Maryland	1,770	††13.8	13.1	14.5	California	5,572	††7.8	7.6	8.0
District of Columbia	320	††17.4	15.2	19.6	Alaska	69	12.1	9.2	15.0
Virginia	1,472	††9.0	8.5	9.5	Hawaii	243	††9.1	7.9	10.3

NOTES: Data are final. Rates per 100,000 U.S. standard million population; see Technical notes. The symbols † and †† denote statistical significance of the difference between the U.S. and State rates at the 0.05 and 0.01 levels, respectively. For method of computation of rates, confidence limits, and tests of statistical significance, see Technical notes.

Table 1. Provisional number of live births, marriages, divorces, deaths, and infant deaths and rates, by month: United States, January 1993–April 1994

[Data are provisional and are subject to monthly reporting variation; see Technical notes]

Period	Live births				Marriages		Divorces		Deaths		Infant deaths	
	Number	Rate per 1,000 women aged 15–44 years			Number	Rate per 1,000 population	Number	Rate per 1,000 population	Number	Rate per 1,000 population	Number	Rate per 1,000 live births
		Rate per 1,000 population	Unadjusted	Seasonally adjusted ¹								
1993:												
January	325,000	14.9	64.7	68.1	103,000	4.8	92,000	4.2	198,000	9.1	2,800	8.4
February	308,000	15.6	68.0	69.6	154,000	7.9	87,000	4.4	187,000	9.5	2,700	8.7
March	360,000	16.5	71.7	73.1	157,000	7.3	113,000	5.2	217,000	10.0	3,000	8.7
April	328,000	15.5	67.5	69.1	174,000	8.3	98,000	4.6	196,000	9.3	2,800	8.6
May	335,000	15.3	66.8	67.7	221,000	10.1	103,000	4.7	185,000	8.5	2,900	8.8
June	321,000	15.2	66.1	65.1	252,000	11.9	101,000	4.8	178,000	8.4	2,700	8.4
July	357,000	16.3	71.2	68.4	235,000	10.7	100,000	4.6	184,000	8.4	2,700	7.7
August	367,000	16.7	73.0	69.0	254,000	11.6	100,000	4.6	180,000	8.2	2,700	7.8
September	356,000	16.8	73.3	68.6	218,000	10.3	101,000	4.8	174,000	8.2	2,600	7.5
October	344,000	15.6	68.4	68.6	218,000	9.9	102,000	4.7	188,000	8.5	2,800	8.0
November	316,000	14.8	64.9	66.9	162,000	7.6	94,000	4.4	180,000	8.5	2,600	8.1
December	323,000	14.7	64.3	65.9	185,000	8.4	96,000	4.4	202,000	9.2	2,800	8.6
1994:												
January	352,000	16.0	70.0	73.5	107,000	4.9	97,000	4.4	224,000	10.2	2,500	7.4
February	295,000	14.8	64.9	66.2	156,000	8.0	90,000	4.5	204,000	10.3	2,800	9.4
March	352,000	15.9	69.9	70.8	147,000	6.8	103,000	4.7	199,000	9.0	2,700	8.0
April	302,000	14.1	62.0	63.6	175,000	8.3	99,000	4.6	182,000	8.5	2,500	7.9

¹The method of seasonal adjustment, developed by the U.S. Bureau of the Census, is described in *The X-11 Variant of the Census Method II Seasonal Adjustment Program*, Technical Paper No. 15 (1967 revision).

NOTE: Figures include revisions received from the States and, therefore, may differ from those previously published.

Symbols

- - - Data not available
- . . . Category not applicable
- Quantity zero
- 0.0 Quantity more than zero but less than 0.05
- * Figure does not meet standards of reliability or precision (see Technical notes)

Table 2. Provisional number of live births and deaths: each division and State, April 1993 and 1994, and cumulative figures, 1992–94

[Data are estimates by State of residence; see Technical notes]

Area	Live births					Deaths				
	April		January–April			April		January–April		
	1994	1993	1994	1993	1992	1994	1993	1994	1993	1992
New England	18,388	15,874	137,118	58,657	63,971	10,087	10,987	40,249	42,526	40,116
Maine	---	1,300	---	4,642	4,786	1,173	721	4,031	3,490	3,541
New Hampshire	902	1,419	4,326	4,536	5,170	617	734	3,029	3,005	2,802
Vermont	480	766	1,947	2,328	2,529	419	529	1,614	1,672	1,724
Massachusetts	5,901	7,821	26,740	30,339	32,041	4,925	6,004	18,239	21,285	19,033
Rhode Island	1,105	1,153	4,105	4,162	4,442	726	838	3,218	3,504	3,134
Connecticut	---	3,415	---	12,650	15,003	2,227	2,161	10,118	9,570	9,882
Middle Atlantic	46,980	45,811	178,809	186,245	185,595	31,302	33,457	132,284	133,853	126,178
New York	25,386	24,291	92,590	93,373	95,869	14,867	16,747	61,053	63,214	59,067
New Jersey	9,050	9,291	34,502	39,750	34,697	5,763	6,398	25,137	25,963	24,463
Pennsylvania	12,544	12,229	51,717	53,122	55,029	10,672	10,312	46,094	44,676	42,648
East North Central	54,783	55,730	211,912	216,674	213,082	31,852	32,264	140,914	133,931	128,401
Ohio	14,286	14,169	54,767	53,596	57,738	8,554	8,463	39,067	35,138	34,722
Indiana	6,447	7,653	26,570	27,713	27,349	4,221	4,423	18,536	18,209	17,511
Illinois	15,747	15,635	60,661	61,558	58,304	8,954	8,931	37,907	36,962	35,238
Michigan	12,819	12,472	45,329	50,577	46,843	6,687	7,131	29,285	28,627	27,462
Wisconsin	5,484	5,801	24,585	23,230	22,848	3,436	3,316	16,119	14,995	13,468
West North Central	21,051	21,041	82,975	86,268	86,944	13,108	14,390	60,542	61,041	55,147
Minnesota	5,549	5,431	21,193	21,043	21,366	2,839	3,171	12,743	12,544	11,936
Iowa	2,621	3,323	10,879	12,607	12,638	2,083	2,386	9,293	10,589	9,624
Missouri	5,956	5,935	24,982	25,931	24,821	4,093	4,468	20,114	19,900	16,274
North Dakota	706	725	2,774	2,855	2,929	462	483	2,021	1,975	1,892
South Dakota	845	825	3,485	3,476	3,845	502	543	2,421	2,400	2,570
Nebraska	2,178	1,891	7,427	7,537	7,958	1,289	1,259	5,170	5,223	5,060
Kansas	3,196	2,911	12,235	12,819	13,387	1,840	2,080	8,780	8,410	7,791
South Atlantic	48,473	53,005	214,628	221,173	219,703	33,623	39,267	151,759	150,521	143,242
Delaware	826	988	3,370	3,614	3,497	493	532	2,125	2,097	2,066
Maryland	4,908	6,764	20,650	24,604	22,851	3,073	4,173	12,956	15,635	12,351
District of Columbia	850	825	2,938	3,305	3,345	534	491	1,976	2,276	2,327
Virginia	6,377	6,408	29,938	30,464	31,656	4,408	4,450	18,863	18,237	17,222
West Virginia	1,699	2,061	7,595	8,060	7,781	1,630	1,777	7,454	7,142	7,579
North Carolina	7,896	7,996	33,061	32,955	33,300	4,989	5,525	23,275	22,634	20,772
South Carolina	3,884	3,941	17,474	17,355	18,370	2,441	2,634	10,632	10,804	10,758
Georgia	7,016	8,408	35,747	37,154	37,047	4,154	5,789	20,557	19,026	18,787
Florida	15,017	15,614	63,855	63,662	61,856	11,901	13,896	53,921	52,670	51,380
East South Central	17,928	19,688	77,359	75,944	76,741	12,970	14,009	56,875	55,755	52,847
Kentucky	3,947	4,149	17,075	17,000	18,036	3,137	3,262	13,836	13,244	12,642
Tennessee	5,728	6,961	25,658	23,774	24,231	4,089	4,861	17,130	17,932	16,862
Alabama	4,885	5,403	20,264	21,593	20,910	3,547	3,707	16,121	15,196	14,579
Mississippi	3,368	3,175	14,362	13,577	13,564	2,197	2,179	9,788	9,383	8,764
West South Central	38,646	36,816	158,046	160,619	163,728	19,772	18,877	88,169	84,252	82,270
Arkansas	2,767	2,445	11,396	10,968	11,572	2,215	2,226	9,924	9,524	9,062
Louisiana	5,276	4,956	23,605	25,369	26,619	3,919	3,382	15,370	15,614	14,393
Oklahoma	3,325	4,055	15,328	15,327	16,048	2,443	2,672	11,541	11,533	10,658
Texas ²	27,278	25,360	107,717	108,955	109,489	11,195	10,597	51,334	47,581	48,157
Mountain	18,386	21,440	77,293	81,837	80,271	8,350	8,957	37,251	38,339	36,355
Montana	945	996	3,450	3,673	3,868	592	683	2,476	2,645	2,439
Idaho	1,609	1,498	5,859	5,800	5,618	654	715	2,909	2,824	2,719
Wyoming	538	536	2,028	2,098	2,156	258	266	1,154	1,149	1,117
Colorado	4,330	4,377	17,592	17,988	18,333	1,643	1,952	8,305	8,026	7,868
New Mexico	1,959	2,571	9,125	9,355	8,793	1,027	1,046	4,374	4,253	4,267
Arizona	4,295	6,845	18,407	23,998	22,058	2,356	2,504	10,248	12,323	10,955
Utah	2,898	3,074	12,639	11,952	12,199	806	881	3,687	3,411	3,378
Nevada	1,812	1,543	8,193	6,973	7,246	1,014	910	4,098	3,708	3,612
Pacific	42,269	57,545	235,137	243,000	251,627	21,322	23,654	101,760	97,627	102,599
Washington	4,779	5,603	23,701	20,405	24,131	3,862	2,483	13,593	12,243	13,238
Oregon	3,480	3,404	14,773	13,879	13,545	2,231	2,238	9,965	9,162	8,451
California ²	31,316	46,089	185,527	199,143	203,325	14,433	18,163	74,947	73,041	77,884
Alaska	1,123	808	4,919	3,107	3,919	180	203	788	627	654
Hawaii	1,571	1,641	6,217	6,466	6,707	616	567	2,467	2,554	2,372

¹Excludes figures for State(s) shown below as not available.

²Figures include adjustments for varying length of reporting periods; see Technical notes.

NOTES: Figures include all revisions received from the States. Cumulative figures for the current year reflect revisions received for previous months, and figures for earlier years may differ from those previously published.

Table 3. Provisional number of marriages and divorces: each division and State, April 1993 and 1994, and cumulative figures, 1992–94

[By State of occurrence. Number of events reported; see Technical notes. Divorces include reported annulments]

Area	Marriages					Divorces				
	April		January–April			April		January–April		
	1994	1993	1994	1993	1992	1994	1993	1994	1993	1992
New England	16,741	3,966	120,976	16,633	21,945	11,978	3,689	18,725	14,271	14,242
Maine	557	500	1,636	1,492	1,796	---	459	---	1,738	1,928
New Hampshire	540	352	1,756	1,392	1,919	457	422	1,619	1,506	1,777
Vermont	242	283	974	1,147	1,048	264	323	917	941	1,117
Massachusetts	4,901	1,195	15,320	7,608	11,578	1,063	1,366	5,148	5,285	4,375
Rhode Island	501	437	1,290	1,274	1,281	194	238	1,041	1,201	1,199
Connecticut	---	1,199	---	3,720	4,323	---	881	---	3,600	3,846
Middle Atlantic	18,697	18,566	57,856	63,325	67,880	9,605	8,350	37,863	38,846	41,303
New York ²	10,430	9,933	32,735	36,096	38,741	4,849	2,992	18,312	17,772	19,437
New Jersey	3,664	3,588	10,642	11,454	11,986	1,856	2,065	7,546	8,335	8,911
Pennsylvania	4,603	5,045	14,479	15,775	17,153	2,900	3,293	12,005	12,739	12,955
East North Central	21,700	22,481	71,799	74,980	77,709	112,454	111,662	147,700	149,288	149,773
Ohio	5,272	5,431	19,961	20,113	21,577	3,954	3,476	15,865	15,769	17,266
Indiana	3,909	3,171	11,206	11,645	12,030	---	---	---	---	---
Illinois	6,185	6,194	20,385	20,608	21,446	4,280	3,726	13,145	14,134	14,151
Michigan	4,428	4,420	13,717	14,232	14,211	2,660	3,067	12,858	13,387	12,336
Wisconsin	1,906	3,265	6,530	8,382	8,445	1,560	1,393	5,832	5,998	6,020
West North Central	9,192	9,268	31,696	34,776	33,635	7,440	7,228	26,530	25,571	25,686
Minnesota	2,105	1,788	5,931	5,754	6,230	1,362	1,710	5,467	5,809	4,852
Iowa	1,296	1,261	4,389	6,767	4,875	920	849	3,867	3,569	3,833
Missouri	2,835	3,001	10,110	11,094	11,335	2,351	2,046	8,892	8,276	8,526
North Dakota	282	287	870	932	860	186	187	706	700	772
South Dakota	401	446	1,511	1,615	1,648	255	278	923	979	959
Nebraska	858	1,084	2,827	2,968	2,986	633	533	2,296	2,083	2,279
Kansas	1,415	1,401	6,058	5,646	5,701	1,733	1,625	4,375	4,155	4,465
South Atlantic	36,777	36,293	126,524	127,404	125,477	19,277	21,054	75,305	77,387	77,386
Delaware	421	357	1,166	1,202	1,191	255	305	1,005	1,044	989
Maryland	2,999	3,129	10,198	10,172	10,980	1,104	1,492	5,076	5,570	5,762
District of Columbia	233	110	429	385	526	170	213	572	532	862
Virginia	5,455	5,452	18,083	18,274	18,234	2,654	2,387	9,238	9,123	9,273
West Virginia	632	1,488	2,510	3,958	2,882	461	585	2,938	3,058	3,232
North Carolina	4,214	3,886	12,289	11,863	12,820	3,232	3,413	11,472	11,436	11,517
South Carolina	4,712	4,758	15,490	15,305	15,952	1,327	1,495	4,807	4,901	5,553
Georgia	5,404	5,243	18,579	18,667	16,887	2,974	3,392	11,919	12,466	12,665
Florida	12,707	11,870	47,780	47,578	46,005	7,100	7,772	28,278	29,257	27,533
East South Central	13,451	14,129	51,190	51,645	51,756	8,377	7,462	31,493	30,633	32,627
Kentucky	3,386	3,777	12,962	11,765	14,033	2,434	1,952	7,809	7,032	7,336
Tennessee	5,176	5,629	20,015	21,409	20,118	3,164	2,508	10,885	10,722	11,462
Alabama	3,151	2,884	12,033	11,838	11,021	2,007	2,009	8,612	8,913	9,067
Mississippi	1,738	1,839	6,180	6,633	6,584	772	993	4,187	3,966	4,762
West South Central	119,076	21,816	183,398	89,719	88,267	112,491	111,149	148,467	147,122	149,951
Arkansas	2,560	2,397	11,462	10,464	10,690	1,726	1,616	6,433	5,603	6,107
Louisiana	---	3,099	---	9,098	8,804	---	---	---	---	---
Oklahoma	2,070	2,226	8,093	8,301	8,876	1,777	2,033	7,019	6,922	8,737
Texas ³	14,446	14,094	63,843	61,856	59,897	8,988	7,500	35,015	34,597	35,107
Mountain	19,971	20,627	78,834	73,890	70,983	15,859	16,571	124,476	125,485	126,036
Montana	385	359	1,313	1,401	1,514	320	372	1,363	1,371	1,482
Idaho	894	865	4,448	3,626	3,724	672	603	2,499	2,322	2,298
Wyoming	219	292	971	1,042	1,042	275	256	981	1,007	1,016
Colorado	2,151	2,109	8,061	7,982	7,790	1,157	1,601	5,802	6,375	6,367
New Mexico ^{4,5}	878	1,064	3,311	3,473	3,644	804	889	3,131	3,343	3,244
Arizona ²	2,853	3,766	12,013	13,393	11,481	1,838	1,992	7,611	8,091	8,370
Utah	1,416	1,675	5,655	5,655	5,667	793	858	3,089	2,976	3,259
Nevada	11,175	10,497	43,062	37,387	36,121	---	---	---	---	---
Pacific	17,459	18,012	75,856	82,346	96,265	13,619	13,981	117,579	115,451	116,469
Washington	3,263	1,189	10,057	8,470	9,990	1,764	2,034	9,506	7,810	8,485
Oregon	1,250	1,769	5,511	5,561	4,303	1,500	1,383	5,844	5,220	5,100
California	11,171	13,275	53,505	61,701	75,027	---	---	---	---	---
Alaska	363	347	1,439	1,250	1,519	280	248	1,097	871	1,318
Hawaii	1,412	1,432	5,344	5,364	5,426	75	316	1,132	1,550	1,566

¹Excludes figures for State(s) shown below as not available.

²Figures for marriages are marriage licenses issued for some counties.

³Figures include adjustments for varying length of reporting periods; see Technical notes.

⁴Figures for marriages are marriage licenses issued.

⁵Figures for divorces include estimates for some counties.

NOTES: Figures include all revisions received from the States. Cumulative figures for the current year reflect revisions received for previous months, and figures for earlier years may differ from those previously published.

Table 4. Provisional number of deaths under 1 year and infant mortality rates: each division and State, 12 months ending with April 1993 and 1994

[Data are estimates by State of residence; see Technical notes. Infant mortality rates are deaths under 1 year per 1,000 live births in specified area]

Area	12 months ending with April			
	1994		1993	
	Number	Rate	Number	Rate
New England	1,655	15.5	1,192	6.5
Maine	---	---	66	4.3
New Hampshire	87	5.9	73	4.8
Vermont	35	5.1	44	5.9
Massachusetts	430	5.2	565	6.5
Rhode Island	103	7.2	127	8.8
Connecticut	---	---	317	7.0
Middle Atlantic	12,302	18.4	4,908	8.6
New York	---	---	2,467	8.7
New Jersey	1,004	8.5	998	8.0
Pennsylvania	1,298	8.2	1,443	8.8
East North Central	5,856	9.1	6,010	9.1
Ohio	1,468	9.3	1,373	8.3
Indiana	737	8.8	824	9.8
Illinois	1,844	9.7	1,890	9.7
Michigan	1,274	9.2	1,408	9.9
Wisconsin	533	7.5	515	7.3
West North Central	2,046	8.0	1,995	7.7
Minnesota	479	7.5	454	7.0
Iowa	249	7.1	237	6.2
Missouri	629	8.2	672	8.8
North Dakota	62	7.2	56	6.3
South Dakota	120	11.1	110	10.1
Nebraska	180	7.9	167	7.4
Kansas	327	8.7	299	8.1
South Atlantic	6,186	9.3	6,576	9.6
Delaware	90	8.7	105	9.5
Maryland	667	9.3	699	9.0
District of Columbia	157	16.7	187	18.7
Virginia	777	8.2	930	9.6
West Virginia	177	8.2	211	9.4
North Carolina	1,028	10.2	1,071	10.4
South Carolina	486	9.0	552	9.9
Georgia	1,217	11.0	1,093	9.8
Florida	1,587	8.2	1,728	8.9
East South Central	2,137	9.2	2,342	10.0
Kentucky	432	8.3	481	9.1
Tennessee	624	8.3	684	9.3
Alabama	623	10.0	647	10.2
Mississippi	458	10.7	530	12.2
West South Central	3,843	8.0	3,836	8.1
Arkansas	303	8.7	315	9.2
Louisiana	640	9.4	679	9.6
Oklahoma	405	8.7	451	9.6
Texas ²	2,495	7.6	2,391	7.4
Mountain	1,719	7.1	1,866	7.6
Montana	86	7.7	86	7.6
Idaho	132	7.7	147	8.3
Wyoming	34	5.2	70	10.3
Colorado	376	6.9	409	7.5
New Mexico	259	9.4	208	7.2
Arizona	476	7.3	572	8.3
Utah	214	5.8	238	6.4
Nevada	142	6.4	136	6.2
Pacific	4,875	6.7	4,973	6.6
Washington	495	6.6	471	6.2
Oregon	296	6.9	302	7.2
California ²	3,882	6.7	3,978	6.6
Alaska	76	6.1	89	8.2
Hawaii	126	6.5	133	6.8

¹Excludes figures for State shown below as not available.

²Figures include adjustments for varying length of reporting periods; see Technical notes.

NOTES: Figures include all revisions received from the States. Figures for the current year reflect revisions received for previous months, and figures for earlier years may differ from those previously published.

Table 5. Provisional number of deaths and death rates, by age, race, and sex, and age-adjusted death rates by race and sex: United States, March 1993 and 1994, cumulative figures 1993 and 1994, and 12 months ending with March 1993 and 1994

[Data are provisional, estimated from a 10-percent sample of deaths. Age-specific rates on an annual basis per 100,000 population in specified group; age-adjusted rates per 100,000 U.S. standard million population; see Technical notes. Due to rounding of estimates, figures may not add to totals. For method of computation and information on standard errors of the estimates, see Technical notes]

Age, race, and sex	March				January–March				12 months ending with March			
	1994		1993		1994		1993		1994		1993	
	Number	Rate	Number	Rate	Number	Rate	Number	Rate	Number	Rate	Number	Rate
All races, both sexes¹												
All ages	199,000	902.7	217,000	996.0	627,000	980.4	602,000	950.9	2,293,000	886.5	2,192,000	856.7
Under 1 year	} 4,240	87.3	4,470	93.2	8,100	² 844.3	8,600	² 882.6	32,800	² 830.6	33,700	² 847.3
1–4 years					2,010	51.4	1,940	50.2	7,100	44.9	6,910	44.3
5–14 years					1,780	19.2	2,000	22.0	8,530	22.9	8,290	22.7
15–24 years					2,750	90.0	2,860	93.4	8,550	96.3	8,220	92.4
25–34 years	4,570	129.5	4,950	138.6	14,230	138.8	14,480	139.4	59,690	142.9	57,430	135.8
35–44 years	7,940	225.7	8,280	240.7	24,840	243.5	24,060	241.1	97,340	237.2	94,010	234.1
45–54 years	11,680	465.7	12,120	503.9	34,910	480.9	33,240	477.7	135,160	465.6	125,130	450.0
55–64 years	20,690	1,160.2	22,370	1,259.8	63,580	1,228.5	63,610	1,233.6	242,280	1,156.5	241,430	1,154.3
65–74 years	42,720	2,688.6	47,290	2,991.5	132,620	2,875.4	131,230	2,861.7	491,740	2,630.9	481,160	2,597.1
75–84 years	56,530	6,097.4	62,450	6,862.3	180,530	6,715.5	171,350	6,493.5	646,890	5,961.0	614,750	5,784.2
85 years and over	47,970	16,428.4	52,500	18,452.1	155,980	18,428.2	143,060	17,358.9	535,360	15,667.5	493,640	14,967.9
Not stated	50	...	70	...	140	...	190	...	830	...	770	...
Age-adjusted rate ³	...	518.0	...	569.4	...	555.2	...	547.8	...	515.3	...	504.9
All races, male¹												
All ages	101,140	938.9	109,420	1,027.1	317,770	1,016.9	305,140	987.3	1,178,790	933.3	1,126,340	901.9
Under 1 year	} 2,420	97.3	2,370	96.5	4,830	² 970.6	5,020	² 1,002.4	19,140	² 944.3	18,510	² 910.0
1–4 years					1,210	60.0	1,080	54.6	4,100	50.7	3,840	48.1
5–14 years					1,010	21.4	1,150	24.6	5,040	26.5	5,070	27.1
15–24 years					2,120	135.8	2,040	130.3	6,630	146.3	6,110	134.2
25–34 years	3,190	180.7	3,520	196.9	10,150	198.1	10,470	201.6	44,020	210.5	42,340	200.0
35–44 years	5,660	324.4	5,780	338.9	17,480	345.7	16,760	339.0	67,360	331.0	65,260	328.0
45–54 years	7,410	604.4	7,880	670.3	22,250	627.1	21,060	619.1	85,670	603.8	78,970	581.1
55–64 years	12,770	1,507.3	13,000	1,544.2	38,910	1,582.7	37,980	1,554.0	147,850	1,487.3	144,970	1,462.6
65–74 years	24,600	3,500.7	27,340	3,921.4	76,630	3,757.2	74,920	3,704.7	282,650	3,423.6	274,860	3,368.0
75–84 years	27,650	7,777.3	30,470	8,791.0	88,400	8,580.2	83,980	8,357.8	320,950	7,737.5	303,270	7,506.7
85 years and over	15,300	18,571.7	16,960	21,334.4	50,230	21,055.3	46,490	20,192.5	174,590	18,243.5	162,520	17,646.0
Not stated	20	...	50	...	50	...	120	...	480	...	500	...
Age-adjusted rate ³	...	669.2	...	728.7	...	718.9	...	705.0	...	669.8	...	653.3
All races, female¹												
All ages	98,000	868.1	107,940	966.4	309,650	945.5	296,840	916.1	1,114,490	842.0	1,065,750	813.7
Under 1 year	} 1,820	76.7	2,100	89.8	3,410	² 714.4	3,600	² 754.9	13,760	² 711.5	15,160	² 781.4
1–4 years					810	42.4	860	45.6	2,990	38.8	3,070	40.3
5–14 years					770	17.1	850	19.0	3,490	19.2	3,220	18.0
15–24 years					640	42.8	820	54.8	1,920	44.5	2,110	48.6
25–34 years	1,380	78.2	1,430	80.1	4,090	79.8	4,010	77.3	15,670	75.1	15,090	71.4
35–44 years	2,290	129.1	2,500	144.1	7,370	143.2	7,290	145.1	29,980	144.9	28,750	141.9
45–54 years	4,270	333.0	4,240	344.8	12,660	340.9	12,180	342.4	49,480	333.4	46,170	324.8
55–64 years	7,910	845.0	9,370	1,003.4	24,670	907.6	25,630	945.2	94,430	857.8	96,460	876.5
65–74 years	18,120	2,044.7	19,940	2,256.6	55,990	2,176.3	56,310	2,196.3	209,100	2,003.8	206,310	1,990.3
75–84 years	28,870	5,050.8	31,980	5,675.9	92,130	5,557.6	87,370	5,346.6	325,940	4,861.9	311,480	4,728.0
85 years and over	32,660	15,568.6	35,540	17,334.5	105,750	17,386.4	96,580	16,262.1	360,770	14,665.4	331,130	13,930.6
Not stated	30	...	20	...	90	...	70	...	350	...	270	...
Age-adjusted rate ³	...	392.5	...	440.0	...	420.3	...	419.5	...	387.8	...	383.3
White												
All ages	171,210	933.5	186,520	1,025.7	540,420	1,015.5	518,850	983.3	1,971,570	916.1	1,884,510	883.0
Under 1 year	} 2,770	71.8	3,060	80.3	5,270	² 688.8	5,750	² 749.3	21,160	² 682.4	21,700	² 693.7
1–4 years					1,320	42.7	1,350	44.1	4,890	39.1	4,930	39.9
5–14 years					1,270	17.2	1,440	20.1	6,310	21.3	5,970	20.4
15–24 years					1,850	75.7	1,890	76.9	5,880	82.7	5,510	77.2
25–34 years	3,180	110.0	3,580	121.9	9,700	115.4	10,390	121.8	42,530	124.1	40,750	117.0
35–44 years	5,490	187.1	5,740	199.5	17,190	202.1	17,070	204.5	68,750	200.6	67,760	201.5
45–54 years	9,080	422.2	9,180	444.1	26,930	432.6	25,510	426.3	104,100	417.8	97,160	406.3
55–64 years	16,850	1,090.3	18,250	1,182.7	52,020	1,159.5	51,940	1,158.9	198,060	1,089.6	197,490	1,085.0
65–74 years	37,000	2,619.8	40,410	2,869.7	114,700	2,797.3	113,330	2,773.5	425,330	2,558.4	416,710	2,522.8
75–84 years	50,680	6,032.9	55,950	6,781.6	162,070	6,653.0	154,150	6,443.6	582,380	5,922.7	552,830	5,736.5
85 years and over	44,270	16,610.7	48,420	18,649.2	143,970	18,633.9	132,290	17,589.1	492,790	15,804.7	454,240	15,091.0
Not stated	40	...	40	...	80	...	120	...	550	...	550	...
Age-adjusted rate ³	...	488.7	...	535.2	...	524.4	...	517.8	...	487.1	...	477.2

See footnotes at end of table.

Table 5. Provisional number of deaths and death rates, by age, race, and sex, and age-adjusted death rates by race and sex: United States, March 1993 and 1994, cumulative figures 1993 and 1994, and 12 months ending with March 1993 and 1994—Con.

[Data are provisional, estimated from a 10-percent sample of deaths. Age-specific rates on an annual basis per 100,000 population in specified group; age-adjusted rates per 100,000 U.S. standard million population; see Technical notes. Due to rounding of estimates, figures may not add to totals. For method of computation and information on standard errors of the estimates, see Technical notes]

Age, race, and sex	March				January–March				12 months ending with March			
	1994		1993		1994		1993		1994		1993	
	Number	Rate	Number	Rate	Number	Rate	Number	Rate	Number	Rate	Number	Rate
White male												
All ages	85,330	948.7	92,940	1,042.5	269,990	1,034.6	260,360	1,006.5	1,001,970	949.4	959,620	917.3
Under 1 year					2,990	² 759.4	3,380	² 858.5	12,060	² 758.0	12,130	² 755.8
1–4 years	} 1,530	77.3	1,640	83.8	800	50.5	790	49.7	2,840	44.3	2,820	44.5
5–14 years					700	18.6	860	23.2	3,780	24.9	3,670	24.5
15–24 years					1,380	110.1	1,300	103.0	4,500	123.5	3,990	108.8
25–34 years	2,260	154.7	2,630	177.3	7,100	167.2	7,710	178.8	31,750	183.3	30,680	174.4
35–44 years	3,920	266.5	4,160	288.5	12,180	285.5	12,180	291.3	48,410	281.8	48,090	285.5
45–54 years	5,760	542.5	6,000	588.1	17,360	565.2	16,350	553.8	66,680	542.0	61,920	524.8
55–64 years	10,450	1,407.9	10,680	1,444.2	32,250	1,497.0	31,400	1,462.7	122,000	1,399.2	120,290	1,379.9
65–74 years	21,280	3,385.0	23,660	3,786.0	66,470	3,642.9	65,410	3,607.6	246,860	3,340.5	239,870	3,276.5
75–84 years	24,760	7,667.8	27,480	8,730.6	79,580	8,502.8	75,740	8,303.2	289,710	7,692.8	273,630	7,457.9
85 years and over	13,970	18,776.9	15,370	21,391.2	46,030	21,348.5	42,480	20,414.4	159,040	18,386.1	148,070	17,796.9
Not stated	20	...	30	...	40	...	70	...	320	...	340	...
Age-adjusted rate ³	625.5	...	685.8	...	676.8	...	667.2	...	632.4	...	618.4
White female												
All ages	85,880	918.8	93,580	1,009.4	270,430	997.1	258,490	960.9	969,600	884.0	924,890	849.9
Under 1 year					2,290	² 609.3	2,370	² 634.4	9,100	² 602.6	9,580	² 629.0
1–4 years	} 1,240	66.0	1,420	76.5	530	34.5	570	38.2	2,040	33.5	2,110	35.1
5–14 years					570	16.0	580	16.5	2,530	17.6	2,300	16.2
15–24 years					470	39.5	590	49.4	1,370	39.6	1,520	43.5
25–34 years	920	64.3	940	64.7	2,600	62.8	2,680	63.2	10,780	63.6	10,070	58.5
35–44 years	1,570	107.3	1,590	110.7	5,010	118.1	4,890	117.4	20,330	119.0	19,680	117.3
45–54 years	3,330	305.8	3,180	303.7	9,570	303.6	9,160	302.4	37,420	296.6	35,250	291.0
55–64 years	6,390	795.5	7,580	943.2	19,770	847.3	20,540	879.9	76,050	804.1	77,200	813.9
65–74 years	15,720	2,006.0	16,750	2,138.5	48,230	2,120.1	47,920	2,108.2	178,470	1,932.5	176,840	1,922.8
75–84 years	25,920	5,012.1	28,470	5,579.4	82,500	5,499.0	78,410	5,298.0	292,660	4,823.8	279,200	4,678.3
85 years and over	30,290	15,766.6	33,040	17,594.7	97,940	17,581.6	89,810	16,507.0	333,750	14,813.6	306,180	14,057.9
Not stated	20	...	10	...	40	...	50	...	230	...	210	...
Age-adjusted rate ³	375.3	...	412.9	...	398.4	...	395.3	...	366.9	...	361.2
Black												
All ages	24,860	900.3	27,700	1,019.5	77,210	964.2	73,980	938.9	285,290	883.1	272,850	858.5
Under 1 year					2,660	² 1,697.0	2,650	² 1,672.2	10,700	² 1,651.2	10,780	² 1,681.7
1–4 years	} 1,250	165.4	1,320	177.3	550	87.3	530	86.5	1,810	72.2	1,670	67.6
5–14 years					440	30.3	450	32.4	1,890	33.1	1,960	35.1
15–24 years					780	170.7	860	189.8	2,340	176.5	2,400	182.4
25–34 years	1,250	269.5	1,220	261.9	3,970	294.6	3,670	271.3	15,190	277.6	15,040	273.5
35–44 years	2,310	544.8	2,300	560.9	7,160	583.1	6,330	532.9	26,290	534.7	23,580	495.4
45–54 years	2,330	903.6	2,670	1,088.9	7,100	953.0	6,970	983.1	27,820	936.4	24,960	881.4
55–64 years	3,370	1,904.9	3,720	2,129.3	10,200	1,990.5	10,430	2,057.7	39,020	1,884.1	39,110	1,910.6
65–74 years	5,170	3,806.9	6,080	4,533.7	15,940	4,043.8	15,800	4,063.7	58,980	3,700.1	56,970	3,633.3
75–84 years	5,230	7,509.6	5,770	8,387.3	16,270	8,048.9	15,150	7,594.1	56,540	6,895.1	54,820	6,809.9
85 years and over	3,170	15,296.8	3,710	17,902.6	10,520	17,485.4	9,510	15,846.4	37,400	15,203.3	34,670	14,506.3
Not stated	10	...	30	...	60	...	70	...	280	...	220	...
Age-adjusted rate ³	803.8	...	907.9	...	853.5	...	841.2	...	789.1	...	771.5
Black male												
All ages	14,000	1,068.8	14,720	1,142.9	42,240	1,112.1	39,780	1,065.1	155,980	1,018.2	147,220	977.4
Under 1 year					1,670	² 1,122.5	1,510	² 1,884.3	6,470	² 1,972.6	5,820	² 1,796.3
1–4 years	} 790	206.2	700	185.7	300	95.7	270	87.1	1,020	80.3	850	68.0
5–14 years					270	37.6	230	31.3	1,060	36.6	1,170	41.3
15–24 years					660	289.1	670	296.0	1,880	283.8	1,900	289.1
25–34 years	810	369.1	810	367.8	2,660	417.2	2,500	391.0	10,800	417.3	10,550	405.6
35–44 years	1,620	819.3	1,480	775.5	4,980	869.8	4,210	759.8	17,510	764.3	15,580	703.7
45–54 years	1,470	1,256.9	1,730	1,556.1	4,350	1,287.7	4,330	1,344.1	17,050	1,265.8	15,250	1,187.7
55–64 years	2,080	2,697.2	2,160	2,838.4	5,880	2,629.1	5,940	2,694.2	22,840	2,535.0	21,940	2,459.6
65–74 years	2,980	5,292.2	3,200	5,769.9	9,030	5,520.5	8,360	5,199.6	31,890	4,831.8	30,950	4,776.2
75–84 years	2,580	10,297.4	2,570	10,398.5	7,760	10,680.9	7,090	9,905.9	26,710	9,054.2	25,670	8,882.4
85 years and over	1,020	16,915.0	1,370	22,403.7	3,470	19,820.8	3,390	19,038.6	12,990	18,041.7	12,210	17,442.9
Not stated	—	...	20	...	10	...	50	...	160	...	160	...
Age-adjusted rate ³	1,118.8	...	1,194.6	...	1,155.3	...	1,112.2	...	1,059.8	...	1,021.9

See footnotes at end of table.

Table 5. Provisional number of deaths and death rates, by age, race, and sex, and age-adjusted death rates by race and sex: United States, March 1993 and 1994, cumulative figures 1993 and 1994, and 12 months ending with March 1993 and 1994—Con.

[Data are provisional, estimated from a 10-percent sample of deaths. Age-specific rates on an annual basis per 100,000 population in specified group; age-adjusted rates per 100,000 U.S. standard million population; see Technical notes. Due to rounding of estimates, figures may not add to totals. For method of computation and information on standard errors of the estimates, see Technical notes]

Age, race, and sex	March				January–March				12 months ending with March							
	1994		1993		1994		1993		1994		1993					
	Number	Rate	Number	Rate	Number	Rate	Number	Rate	Number	Rate	Number	Rate				
Black female																
All ages	10,860	748.3	12,990	908.9	34,960	830.7	34,200	825.2	129,310	761.2	125,630	751.4				
Under 1 year	} 460	123.5	620	168.7	990	² 1,285.4	1,140	² 1,455.4	4,230	² 1,321.9	4,960	² 1,564.7				
1–4 years					250	81.9	260	85.9	790	63.8	820	67.2				
5–14 years					170	24.3	220	32.1	830	29.5	800	29.0				
15–24 years					120	52.5	190	83.8	460	67.8	500	77.4	1,900	70.9	1,960	73.4
25–34 years					440	180.1	410	166.9	1,310	184.5	1,180	164.0	4,390	152.3	4,490	154.9
35–44 years	690	305.0	820	374.1	2,180	334.2	2,120	335.3	8,780	334.3	8,000	314.2				
45–54 years	860	610.4	940	701.4	2,750	675.3	2,650	681.3	10,760	662.6	9,720	627.9				
55–64 years	1,290	1,292.7	1,570	1,592.2	4,330	1,496.8	4,490	1,569.8	16,180	1,382.9	17,170	1,486.6				
65–74 years	2,190	2,754.9	2,880	3,662.0	6,920	2,998.3	7,440	3,262.8	27,090	2,900.4	26,030	2,829.3				
75–84 years	2,650	5,943.2	3,200	7,259.6	8,510	6,586.2	8,060	6,297.7	29,830	5,681.9	29,150	5,649.2				
85 years and over	2,150	14,632.7	2,340	16,018.4	7,050	16,527.0	6,130	14,482.4	24,410	14,028.7	22,460	13,289.9				
Not stated	10	...	10	...	50	...	20	...	120	...	60	...				
Age-adjusted rate ³	561.2	...	688.8	...	622.6	...	634.1	...	580.3	...	580.4				

¹Includes races other than white and black.

²Death rates under 1 year (based on population estimates) differ from infant mortality rates (based on live births); see table 9 for infant mortality rates.

³For method of computation, see Technical notes.

NOTES: Figures include all revisions received from the States. Cumulative and 12-month figures for the current year reflect revisions received for previous months, and figures for earlier years may differ from those previously published.

Table 6. Provisional number of deaths and death rates for 72 selected causes and Human immunodeficiency virus infection: United States, March 1993 and 1994, cumulative figures 1993 and 1994, and 12 months ending with March 1993 and 1994—Con.

[Data are provisional, estimated from a 10-percent sample of deaths. Rates on an annual basis per 100,000 estimated population. Due to rounding of estimates, figures may not add to totals. For method of computation and information on standard errors of the estimates, see Technical notes. For explanation of the asterisk preceding cause-of-death codes, see Technical notes]

Cause of death (Ninth Revision International Classification of Diseases, 1975)	March		January–March				12 months ending with March					
	1994		1993		1994		1993		1994		1993	
	Number	Rate	Number	Rate	Number	Rate	Number	Rate	Number	Rate	Number	Rate
All causes	199,000	902.7	217,000	996.0	627,000	980.4	602,000	950.9	2,293,000	886.5	2,192,000	856.7
Shigellosis and amebiasis	—	*	—	*	10	*	—	*	10	*	—	*
Certain other intestinal infections	60	*	40	*	240	0.4	180	0.3	640	0.2	690	0.3
Tuberculosis	110	0.5	130	0.6	380	0.6	390	0.6	1,510	0.6	1,400	0.5
Tuberculosis of respiratory system	70	*	100	*	300	0.4	320	0.5	1,210	0.5	1,110	0.4
Other tuberculosis	40	*	30	*	80	*	80	*	300	0.1	290	0.1
Whooping cough	—	*	—	*	20	*	10	*	20	*	20	*
Streptococcal sore throat, scarlatina, and erysipelas	—	*	—	*	—	*	—	*	—	*	—	*
Meningococcal infection	30	*	60	*	90	*	90	*	280	0.1	250	0.1
Septicemia	1,970	8.9	1,910	8.7	5,950	9.3	5,490	8.7	20,840	8.1	19,810	7.7
Acute poliomyelitis	—	*	—	*	—	*	—	*	—	*	—	*
Measles	—	*	—	*	—	*	—	*	—	*	—	*
Viral hepatitis	240	1.1	270	1.2	720	1.1	600	0.9	2,640	1.0	2,040	0.8
Syphilis	20	*	10	*	60	*	10	*	150	0.1	50	*
All other infectious and parasitic diseases ¹	3,880	17.6	3,670	16.8	11,640	18.2	10,690	16.9	45,100	17.4	39,750	15.5
Malignant neoplasms, including neoplasms of lymphatic and hematopoietic tissues	45,490	206.2	47,530	217.8	136,500	213.3	134,630	212.6	533,140	206.1	525,700	205.5
Malignant neoplasms of lip, oral cavity, and pharynx	760	3.4	740	3.4	1,990	3.1	2,010	3.2	8,140	3.1	8,040	3.1
Malignant neoplasms of digestive organs and peritoneum	10,640	48.2	11,220	51.4	31,790	49.7	29,990	47.4	125,260	48.4	122,110	47.7
Malignant neoplasms of respiratory and intrathoracic organs	12,610	57.2	13,750	63.0	38,760	60.6	39,660	62.6	153,030	59.2	153,150	59.9
Malignant neoplasm of breast	3,720	16.9	4,130	18.9	11,070	17.3	11,420	18.0	44,360	17.1	43,590	17.0
Malignant neoplasms of genital organs	5,140	23.3	5,540	25.4	15,620	24.4	15,880	25.1	60,470	23.4	59,760	23.4
Malignant neoplasms of urinary organs	2,080	9.4	2,010	9.2	5,900	9.2	5,810	9.2	22,220	8.6	22,530	8.8
Malignant neoplasms of all other and unspecified sites	5,800	26.3	5,530	25.3	17,080	26.7	16,600	26.2	66,870	25.9	64,470	25.2
Leukemia	1,760	8.0	1,810	8.3	5,370	8.4	5,100	8.1	19,210	7.4	19,800	7.7
Other malignant neoplasms of lymphatic and hematopoietic tissues	2,980	13.5	2,810	12.9	8,910	13.9	8,160	12.9	33,590	13.0	32,250	12.6
Benign neoplasms, carcinoma in situ, and neoplasms of uncertain behavior and of unspecified nature	640	2.9	810	3.7	2,020	3.2	1,960	3.1	8,110	3.1	7,360	2.9
Diabetes mellitus	4,840	21.9	5,490	25.1	15,170	23.7	14,900	23.5	55,300	21.4	50,800	19.9
Nutritional deficiencies	150	0.7	290	1.3	900	1.4	810	1.3	3,420	1.3	3,040	1.2
Anemias	380	1.7	370	1.7	1,010	1.6	1,200	1.9	4,340	1.7	4,270	1.7
Meningitis	90	*	120	0.5	330	0.5	290	0.5	860	0.3	760	0.3
Major cardiovascular diseases	81,590	369.8	92,470	423.7	263,490	411.7	256,740	405.5	947,250	366.2	918,520	359.0
Diseases of heart	63,170	286.3	72,360	331.6	204,720	319.9	200,600	316.8	741,100	286.5	721,780	282.1
Rheumatic fever and rheumatic heart disease	400	1.8	550	2.5	1,430	2.2	1,460	2.3	5,560	2.1	5,670	2.2
Hypertensive heart disease	2,000	9.1	2,630	12.0	6,510	10.2	6,580	10.4	23,200	9.0	22,980	9.0
Hypertensive heart and renal disease	140	0.6	230	1.0	460	0.7	550	0.9	2,180	0.8	2,240	0.9
Ischemic heart disease	42,210	191.3	48,210	220.9	134,990	210.9	132,630	209.5	487,880	188.6	478,830	187.1
Acute myocardial infarction	20,090	91.1	21,530	98.7	63,300	98.9	61,220	96.7	228,770	88.4	226,530	88.5
Other acute and subacute forms of ischemic heart disease	220	1.0	280	1.3	790	1.2	800	1.3	2,950	1.1	2,820	1.1
Angina pectoris	70	*	90	*	260	0.4	190	0.3	800	0.3	920	0.4
Old myocardial infarction and other forms of chronic ischemic heart disease	21,830	99.0	26,310	120.6	70,640	110.4	70,420	111.2	255,360	98.7	248,560	97.1
Other diseases of endocardium	1,220	5.5	1,300	5.9	4,050	6.3	3,820	6.0	14,710	5.7	14,630	5.7
All other forms of heart disease	17,200	78.0	19,450	89.1	57,280	89.5	55,560	87.8	207,580	80.2	197,420	77.2
Hypertension with or without renal disease	1,020	4.6	950	4.3	3,300	5.2	2,820	4.4	11,020	4.3	10,110	4.0
Cerebrovascular diseases	13,690	62.0	14,700	67.4	42,760	66.8	40,990	64.8	151,260	58.5	145,180	56.7
Intracerebral and other intracranial hemorrhage	2,050	9.3	2,310	10.6	5,640	8.8	6,130	9.7	20,780	8.0	21,520	8.4
Cerebral thrombosis and unspecified occlusion of cerebral arteries	1,370	6.2	1,410	6.5	4,090	6.4	4,310	6.8	15,590	6.0	15,490	6.1

See footnotes at end of table.

Table 6. Provisional number of deaths and death rates for 72 selected causes and Human immunodeficiency virus infection: United States, March 1993 and 1994, cumulative figures 1993 and 1994, and 12 months ending with March 1993 and 1994—Con.

[Data are provisional, estimated from a 10-percent sample of deaths. Rates on an annual basis per 100,000 estimated population. Due to rounding of estimates, figures may not add to totals. For method of computation and information on standard errors of the estimates, see Technical notes. For explanation of the asterisk preceding cause-of-death codes, see Technical notes.]

Cause of death (Ninth Revision International Classification of Diseases, 1975)	March		January–March				12 months ending with March					
	1994		1993		1994		1993		1994		1993	
	Number	Rate	Number	Rate	Number	Rate	Number	Rate	Number	Rate	Number	Rate
Cerebral embolism 434.1	120	0.5	60	*	270	0.4	160	0.2	600	0.2	620	0.2
All other and late effects of cerebrovascular diseases 430,433,435–438	10,150	46.0	10,920	50.0	32,770	51.2	30,390	48.0	114,290	44.2	107,550	42.0
Atherosclerosis 440	1,450	6.6	1,870	8.6	5,310	8.3	5,080	8.0	17,280	6.7	16,770	6.6
Other diseases of arteries, arterioles, and capillaries 441–448	2,260	10.2	2,590	11.9	7,400	11.6	7,240	11.4	26,580	10.3	24,690	9.6
Acute bronchitis and bronchiolitis 466	70	*	130	0.6	300	0.5	270	0.4	590	0.2	580	0.2
Pneumonia and influenza 480–487	8,150	36.9	9,660	44.3	29,830	46.6	24,480	38.7	85,070	32.9	74,730	29.2
Pneumonia 480–486	8,100	36.7	9,410	43.1	28,680	44.8	23,980	37.9	83,490	32.3	74,120	29.0
Influenza 487	50	*	250	1.1	1,150	1.8	500	0.8	1,580	0.6	610	0.2
Chronic obstructive pulmonary diseases and allied conditions 490–496	9,570	43.4	11,350	52.0	31,620	49.4	28,330	44.7	103,920	40.2	91,660	35.8
Bronchitis, chronic and unspecified 490–491	330	1.5	450	2.1	1,240	1.9	1,230	2.0	3,600	1.4	3,800	1.5
Emphysema 492	1,520	6.9	2,120	9.7	5,070	7.9	5,200	8.2	17,850	6.9	17,200	6.7
Asthma 493	530	2.4	560	2.6	1,730	2.7	1,280	2.0	5,310	2.1	4,500	1.8
Other chronic obstructive pulmonary diseases and allied conditions 494–496	7,180	32.5	8,220	37.7	23,590	36.9	20,610	32.5	77,160	29.8	66,160	25.9
Ulcer of stomach and duodenum 531–533	520	2.4	490	2.2	1,570	2.4	1,580	2.5	5,540	2.1	5,820	2.3
Appendicitis 540–543	40	*	100	*	70	*	120	0.2	400	0.2	350	0.1
Hernia of abdominal cavity and intestinal obstruction without mention of hernia 550–553,560	620	2.8	550	2.5	1,620	2.5	1,440	2.3	5,960	2.3	5,720	2.2
Chronic liver disease and cirrhosis 571	2,290	10.4	2,360	10.8	6,500	10.1	6,280	9.9	24,880	9.6	24,620	9.6
Cholelithiasis and other disorders of gallbladder 574–575	210	0.9	230	1.0	660	1.0	770	1.2	2,560	1.0	3,060	1.2
Nephritis and nephrotic syndrome, and nephrosis 580–589	2,220	10.1	2,790	12.8	6,730	10.5	7,160	11.3	24,230	9.4	23,680	9.3
Acute glomerulonephritis and nephrotic syndrome 580–581	30	*	40	*	80	*	90	*	320	0.1	300	0.1
Chronic glomerulonephritis, nephritis and nephropathy, not specified as acute or chronic, and renal sclerosis, unspecified 582–583,587	150	0.7	210	1.0	370	0.6	380	0.6	1,560	0.6	1,480	0.6
Renal failure, disorders resulting from impaired renal function, and small kidney of unknown cause 584–586,588–589	2,040	9.2	2,540	11.6	6,280	9.8	6,700	10.6	22,340	8.6	21,900	8.6
Infections of kidney 590	100	*	80	*	340	0.5	250	0.4	1,080	0.4	1,020	0.4
Hyperplasia of prostate 600	30	*	30	*	110	0.2	100	*	460	0.2	360	0.1
Complications of pregnancy, childbirth, and the puerperium 630–676	20	*	30	*	70	*	110	0.2	260	0.1	340	0.1
Pregnancy with abortive outcome 630–638	10	*	10	*	30	*	30	*	60	*	60	*
Other complications of pregnancy, childbirth, and the puerperium 640–676	10	*	20	*	40	*	80	*	200	0.1	280	0.1
Congenital anomalies 740–759	980	4.4	1,020	4.7	2,970	4.7	2,950	4.7	11,630	4.5	12,310	4.8
Certain conditions originating in the perinatal period 760–779	1,250	5.7	1,370	6.3	3,570	5.6	3,610	5.7	15,580	6.0	15,210	5.9
Birth trauma, intrauterine hypoxia, birth asphyxia, and respiratory distress syndrome 767–769	230	1.0	220	1.0	710	1.1	660	1.0	2,980	1.2	3,040	1.2
Other conditions originating in the perinatal period 760–766,770–779	1,020	4.6	1,140	5.2	2,850	4.4	2,950	4.7	12,600	4.9	12,180	4.8
Symptoms, signs, and ill-defined conditions 780–799	3,290	14.9	3,590	16.4	10,710	16.7	10,010	15.8	40,000	15.5	36,030	14.1
All other diseases Residual	18,570	84.2	19,170	87.8	57,520	89.9	53,550	84.6	201,430	77.9	182,710	71.4
Accidents and adverse effects E800–E949	6,950	31.5	6,610	30.3	20,700	32.4	19,150	30.2	88,570	34.2	83,560	32.7
Motor vehicle accidents E810–E825	3,080	14.0	2,900	13.3	8,950	14.0	8,520	13.5	41,210	15.9	40,320	15.8
All other accidents and adverse effects E800–E807,E826–E949	3,860	17.5	3,710	17.0	11,750	18.4	10,630	16.8	47,350	18.3	43,240	16.9
Suicide E950–E959	2,580	11.7	2,540	11.6	7,390	11.5	7,200	11.4	30,180	11.7	28,630	11.2
Homicide and legal intervention E960–E978	1,970	8.9	1,790	8.2	6,080	9.5	5,830	9.2	25,030	9.7	24,870	9.7
All other external causes E980–E999	230	1.0	270	1.2	510	0.8	770	1.2	2,330	0.9	2,360	0.9
Human immunodeficiency virus infection ² *042–*044	3,310	15.0	2,910	13.3	9,820	15.4	8,880	14.0	37,910	14.7	33,170	13.0

¹Includes data for deaths due to Human immunodeficiency virus infection (category numbers *042–*044) shown separately below; see Technical notes.

²Included in All other infectious and parasitic diseases shown above.

NOTES: Figures include all revisions received from the States. Cumulative and 12-month figures for the current year reflect revisions received for previous months, and figures for earlier years may differ from those previously published.

Table 7. Provisional number of deaths and death rates for 16 selected subcategories of Malignant neoplasms, including neoplasms of lymphatic and hematopoietic tissues: United States, March 1993 and 1994, cumulative figures 1993 and 1994, and 12 months ending with March 1993 and 1994

[Data are provisional, estimated from a 10-percent sample of deaths. Rates on an annual basis per 100,000 estimated population. Due to rounding of estimates, figures may not add to totals. For method of computation and information on standard errors of the estimates, see Technical notes]

Cause of death (Ninth Revision International Classification of Diseases, 1975)	March				January–March				12 months ending with March			
	1994		1993		1994		1993		1994		1993	
	Number	Rate	Number	Rate	Number	Rate	Number	Rate	Number	Rate	Number	Rate
Malignant neoplasms, including neoplasms of lymphatic and hematopoietic tissues ¹140–208	45,490	206.2	47,530	217.8	136,500	213.3	134,630	212.6	533,140	206.1	525,700	205.5
Malignant neoplasm of esophagus150	1,060	4.8	840	3.8	2,840	4.4	2,350	3.7	10,730	4.1	10,540	4.1
Malignant neoplasm of stomach151	940	4.3	1,030	4.7	3,260	5.1	3,220	5.1	13,880	5.4	12,860	5.0
Malignant neoplasms of colon, rectum, rectosigmoid junction, and anus153,154	5,100	23.1	5,110	23.4	14,860	23.2	13,340	21.1	58,100	22.5	56,090	21.9
Malignant neoplasm of pancreas157	2,230	10.1	2,610	12.0	6,820	10.6	6,990	11.0	26,410	10.2	26,930	10.5
Malignant neoplasms of trachea, bronchus, and lung162	12,170	55.2	13,380	61.3	37,500	58.6	38,530	60.8	147,850	57.2	148,290	58.0
Malignant melanoma of skin172	610	2.8	610	2.8	1,640	2.5	1,740	2.7	6,680	2.6	6,890	2.7
Malignant neoplasm of cervix uteri180	280	1.3	450	2.1	1,110	1.7	1,310	2.1	4,610	1.8	4,550	1.8
Malignant neoplasms of body of uterus and of uterus, part unspecified179,182	450	2.0	510	2.3	1,420	2.2	1,670	2.6	5,750	2.2	6,420	2.5
Malignant neoplasm of ovary183.0	1,050	4.8	1,260	5.8	3,230	5.0	3,370	5.3	12,610	4.9	13,040	5.1
Malignant neoplasm of prostate185	3,210	14.5	3,200	14.7	9,230	14.4	9,150	14.4	35,430	13.7	34,050	13.3
Malignant neoplasm of bladder188	990	4.5	1,060	4.9	2,900	4.5	3,040	4.8	10,880	4.2	11,270	4.4
Malignant neoplasms of kidney and other and unspecified urinary organs189	1,090	4.9	950	4.3	3,000	4.7	2,770	4.4	11,340	4.4	11,260	4.4
Malignant neoplasms of brain and other and unspecified parts of nervous system191,192	920	4.2	910	4.2	2,920	4.6	2,870	4.5	11,190	4.3	11,100	4.3
Hodgkin's disease201	140	0.6	120	0.5	400	0.6	430	0.7	1,570	0.6	1,730	0.7
Malignant lymphoma other than Hodgkin's disease200,202	1,920	8.7	1,680	7.7	5,670	8.9	5,100	8.1	21,910	8.5	20,950	8.2
Multiple myeloma and other immunoproliferative neoplasms203	930	4.2	1,010	4.6	2,850	4.4	2,630	4.2	10,100	3.9	9,570	3.7

¹Includes figures for subcategories not shown below.

NOTES: Figures include all revisions received from the States. Cumulative and 12-month figures for the current year reflect revisions received for previous months, and figures for earlier years may differ from those previously published.

Table 8. Provisional number of deaths and death rates for injury by firearms: United States, March 1993 and 1994, cumulative figures 1993 and 1994, and 12 months ending with March 1993 and 1994

[Data are provisional, estimated from a 10-percent sample of deaths. Rates on an annual basis per 100,000 estimated population. Due to rounding of estimates, figures may not add to totals. For method of computation and information on standard errors of the estimates, see Technical notes]

Cause of death (Ninth Revision International Classification of Diseases, 1975)	March				January–March				12 months ending with March			
	1994		1993		1994		1993		1994		1993	
	Number	Rate	Number	Rate	Number	Rate	Number	Rate	Number	Rate	Number	Rate
Injury by firearmsE922,E955.0–E955.4,E965.0–965.4,E970,E985.0–E985.4	3,250	14.7	2,990	13.7	9,480	14.8	9,030	14.3	39,250	15.2	37,090	14.5
Accident caused by firearm missileE922	70	*	130	0.6	300	0.4	420	0.6	1,560	0.6	1,720	0.7
Suicide by firearmsE955.0–E955.4	1,710	7.7	1,520	7.0	4,800	7.5	4,380	6.9	19,230	7.4	17,900	7.0
Homicide and legal intervention by firearmsE965.0–E965.4,E970	1,430	6.5	1,290	5.9	4,350	6.8	4,120	6.5	18,170	7.0	17,140	6.7
Injury by firearms, undetermined whether accidentally or purposely inflictedE985.0–E985.4	30	*	40	*	40	*	120	0.2	290	0.1	330	0.1

NOTES: Figures include all revisions received from the States. Cumulative and 12-month figures for the current year reflect revisions received for previous months, and figures for earlier years may differ from those previously published.

Table 9. Provisional number of deaths under 1 year and infant mortality rates, by age and for 10 selected causes: United States, March 1993 and 1994, cumulative figures 1993 and 1994, and 12 months ending with March 1993 and 1994

[Data are provisional, estimated from a 10-percent sample of deaths. Rates on an annual basis per 100,000 live births. Due to rounding of estimates, figures may not add to totals. For method of computation and information on standard errors of the estimates, see Technical notes]

Age and cause of death (Ninth Revision International Classification of Diseases, 1975)	March		January–March				12 months ending with March					
	1994		1993		1994		1993		1994		1993	
	Number	Rate	Number	Rate	Number	Rate	Number	Rate	Number	Rate	Number	Rate
Total, under 1 year	2,700	799.9	3,000	869.8	8,100	822.4	8,600	860.5	32,800	819.4	33,700	830.8
Under 28 days	1,680	489.6	1,730	493.8	4,900	495.6	4,920	491.4	21,370	534.2	21,200	523.2
28 days to 11 months	1,180	343.9	1,320	376.8	3,350	338.8	3,690	368.5	11,530	288.2	12,470	307.7
Certain gastrointestinal diseases008–009,535,555–558	10	*	20	*	60	*	50	*	210	5.2	300	7.4
Pneumonia and influenza480–487	120	35.0	80	*	190	19.2	170	17.0	480	12.0	550	13.6
Congenital anomalies740–759	570	166.1	540	154.1	1,700	171.9	1,700	169.8	6,730	168.2	7,390	182.4
Disorders relating to short gestation and unspecified low birthweight765	250	72.9	350	99.9	900	91.0	960	95.9	4,030	100.7	3,770	93.0
Birth trauma767	20	*	10	*	70	*	20	*	190	4.7	140	3.5
Intrauterine hypoxia and birth asphyxia768	40	*	60	*	160	16.2	160	16.0	650	16.2	690	17.0
Respiratory distress syndrome769	170	49.5	160	45.7	470	47.5	480	47.9	2,080	52.0	2,170	53.5
Other conditions originating in the perinatal period760–764,766,770–779	750	218.6	800	228.4	1,850	187.1	1,980	197.7	8,290	207.2	8,290	204.6
Sudden infant death syndrome798.0	280	81.6	450	128.5	1,050	106.2	1,230	122.8	4,120	103.0	4,140	102.2
All other causesResidual	650	189.4	590	168.4	1,790	181.0	1,860	185.8	6,120	153.0	6,230	153.7

NOTES: Figures include all revisions received from the States. Cumulative and 12-month figures for the current year reflect revisions received for previous months, and figures for earlier years may differ from those previously published.

Technical notes

Nature and sources of data

Data in this report are provisional unless otherwise specified and include only events occurring within the United States. Mortality data exclude fetal deaths.

Birth, death, and infant death figures in tables 2 and 4 for each State are estimates by State of residence. These estimates are derived by applying adjustment ratios to the actual counts of certificates for all events occurring in the State and received in registration offices during a 1-month period regardless of date of the event. The adjustment ratios for each data year represent the observed relationship between final State occurrence and residence figures for the three most recent years for which final data were available and are expressed as a single ratio for each State. As in previous years, monthly State marriage and divorce figures represent the actual count of all events occurring in the State (State of occurrence) that were received in the registration offices during the 1-month period. Delay in the receipt of certificates in a registration office may result in a low State figure for a given month followed by a high figure for the month(s) in which the delayed records are received. Data for previous months and cumulative data include revised figures received from the States.

Figures for births, deaths, and infant deaths for California shown in tables 2 and 4 contain adjustments for varying length of State reporting periods. Figures for Texas for all events shown in tables 2-4 also are adjusted for varying length of State reporting periods. The figures for both States are adjusted by the ratio between the number of days in the data month and the number of days in the State reporting period. The adjusted figures are included in the U.S. totals shown elsewhere in this report.

U.S. totals for births, deaths, and infant deaths are based on the State estimates by State of residence and, therefore, in effect, exclude events to nonresidents of the United States. Events to nonresidents of the United

States are included in all marriage and divorce figures. The effect of excluding events to nonresidents from the U.S. totals is small.

Provisional totals for the United States include estimates for State data shown as not available. Provisional totals for births and marriages for the entire United States include adjustments for observed differences between provisional and final monthly figures.

Divorce figures include reported annulments. The monthly national divorce estimate is obtained by multiplying the total for the reporting areas by the ratio observed between the most recent final annual divorce total for the United States and the provisional total for the reporting areas combined.

Random variation—Although the counts in this report are not subject to sampling variability (except the Current Mortality Sample), they may be affected by random variation. When the number of events is small and the probability of such an event is small, considerable caution must be observed in interpreting the data. Such infrequent events may be assumed to follow a Poisson probability distribution. For this distribution a simple approximation may be used to estimate the random variation as follows:

If N is the number of events in the population and R is the corresponding rate, the chances are 19 in 20 that

$$1. N - 2\sqrt{N} \text{ and } N + 2\sqrt{N}$$

covers the "true" number of events.

$$2. R - 2 \frac{R}{\sqrt{N}} \text{ and } R + 2 \frac{R}{\sqrt{N}}$$

covers the "true" rate.

If the rate R_1 corresponding to N_1 events is compared with the rate R_2 corresponding to N_2 events, the difference between the two rates may be regarded as statistically significant at the 0.05 level if it exceeds

$$2 \sqrt{\frac{R_1^2}{N_1} + \frac{R_2^2}{N_2}}$$

Additional information on random variation in numbers of events, rates, and ratios may be found in the technical

appendixes of *Vital Statistics of the United States, 1989*, volumes I and II.

Rates

Rates are on an annual basis and, except for infant mortality rates, are per 1,000 or 100,000 estimated population residing in the United States. The populations used for computing these rates are furnished by the U.S. Bureau of the Census. Rates shown in this report were computed using populations comparable to those used for final data. Monthly rates are based on populations estimated for the specific month. Year-to-date rates are averages of monthly rates that have been weighted by the number of days in the corresponding months. Rates for 12-month periods are the sum of events for the period per population estimated at the midpoint of the period.

Infant mortality rates are deaths under 1 year of age for the specified period (monthly, year-to-date, or 12-month period) per 1,000 or 100,000 live births. Births used for computing monthly and year-to-date infant mortality rates are adjusted for monthly variation in the number of births. Births used to compute 12-month rates do not contain this adjustment. Births used for computing infant mortality rates are not corrected for observed differences between provisional and final monthly figures as described in Nature and sources of data. Because monthly infant mortality rates are based on relatively few events, they are highly variable. Therefore, comparisons of monthly infant mortality rates should be interpreted cautiously; see Random variation.

Age-adjusted death rates are used to compare relative mortality risks across groups and over time. However, they should be viewed as constructs or indexes rather than as direct or actual measures of mortality risk. Statistically, they are weighted averages of the age-specific death rates, where the weights represent the fixed population proportions by age. See chapter 5 of an earlier report (3). The age-adjusted death rates presented in this report were computed by the direct method, that is, by applying age-specific death rates to the U.S. standard million population (4). See also chapter 10 of an earlier report (3). Age groups in table 5 were used to compute the age-adjusted

rates shown in that table. The age-adjusted death rates on which the State maps are based and which are shown with the State maps were computed from average annual age-specific death rates in 10-year age groups for the specified 3-year period. The average annual age-specific death rates were computed by dividing the number of deaths in an age group for the 3-year period by three times the population in that age group estimated at the midpoint of the period (5). It is important not to compare age-adjusted rates with crude rates.

Current Mortality Sample

The Current Mortality Sample (CMS) is a 10-percent systematic sample of death certificates drawn each month after the certificates are counted in the State registration offices. Deaths and death rates for the United States by age, race, sex, and cause are estimated based on the sample. Because of the additional time required to select and process the certificates, data based on the CMS are published 1 month after publication of the U.S. and State counts. Complete information concerning the underlying cause of death sometimes is not available when the sample is drawn. As a result, estimates based on sample counts for certain causes are biased. Correction for bias is not made in this report but is made in the annual summary (issue number 13 in this series) each year.

Estimated numbers of deaths based on the sample were proportionately adjusted to be consistent with estimates based on the count of death certificates received in State registration offices.

HIV infection—Beginning with data for 1987, the National Center for Health Statistics introduced category numbers *042–*044 for classifying and coding Human immunodeficiency virus infection. The asterisk before the category numbers indicates that these codes are not part of the *Ninth Revision of the International Classification of Diseases*. Deaths classified to these categories are included in All other infectious and parasitic diseases in the List of 72 Selected Causes of Death and are also shown separately at the bottom of table 6.

Sampling variability—Because the estimates of deaths and death rates presented in this report (with the exception of total deaths and deaths under 1 year) are based on a sample of death certificates, they are subject to sampling variability. The estimated relative standard error shown in the following table is a measure of the sampling error of the estimated number of deaths (or of the estimated death rate) expressed as a percent of the estimate. The first column refers to monthly estimates; the second, to annual; cumulative year-to-date totals fall between the two.

The chances are about 2 in 3 that the percent difference between an estimate and the result of a complete count is less than the percent shown. The chances are about 19 in 20 that the percent difference is less than twice the percent shown. A figure based on 100 or fewer estimated deaths has a relative standard error of 30 percent or more and is, therefore, considered unreliable. A rate based on 100 or fewer estimated deaths has been replaced by an asterisk.

Unless otherwise specified, comparisons made in the text between death rates based on the CMS were statistically significant at the 0.05 level of significance. Lack of comment in the text about any two rates does not mean

that the difference was tested and found not to be significant at this level.

Mortality Surveillance System—The Mortality Surveillance System (MSS) charts are based entirely on monthly provisional data from the CMS. Where sample size permits, age-race-sex comparisons are made for the causes of death. Where sample size is too small, only age-sex comparisons are made. A time series regression model of the following form was used:

$$Y(t) = A_0 + A_1t + A_2t^2 + C \cos(2\pi t/12) + S \sin(2\pi t/12) + \epsilon_t$$

where

$Y(t)$ = monthly death rate at time t

t = month number

A_0 = coefficient, which, together with C determines the Y -intercept

A_1 = coefficient of t

A_2 = coefficient of t^2

C, S = coefficients of the harmonic terms

ϵ_t = error terms, assumed to be independent and normally distributed with means 0 and constant variances,

and $\cos(2\pi t/12)$ and $\sin(2\pi t/12)$ are 12-month period harmonic functions.

The coefficients of this model were estimated using provisional monthly death rates for January 1985 through the month that is 12 months prior to the latest month shown in the chart. The graph of the estimated equation and 95-percent prediction intervals is shown for January 1986 through the month that is 12 months prior to the latest month shown in the chart; the graph for the subsequent 12 months is projected (6). Symbols in each chart represent actual monthly death rates based on the CMS. In some cases the data are converted by the natural logarithm before fitting the model. For graphical purposes the data are converted back to rates by the inverse of the natural logarithm. This procedure has the advantage of avoiding negative prediction intervals for the model. The models, parameter estimates, and statistical tests for lack of fit are available on request for the charts published in the MSS. Time series

Relative standard errors for estimated numbers of deaths from the Current Mortality Sample expressed as a percent of the estimate

Estimated number of deaths	Relative standard error of estimate (as percent)	
	170,000 estimated deaths each month	2,000,000 estimated deaths each year
10	94.9	94.9
20	67.1	67.1
50	42.4	42.4
100	30.0	30.0
200	21.2	21.2
500	13.4	13.4
1,000	9.5	9.5
2,000	6.7	6.7
5,000	4.2	4.2
10,000	2.9	3.0
20,000	2.0	2.1
50,000	1.1	1.3
100,000	0.6	0.9
200,000	0.6
500,000	0.4
1,000,000	0.2

regression models have been used previously to describe trends in mortality data (7–9). A list of MSS cause-of-death topics and comparable *Healthy People 2000* (2) objectives is presented on the back of this report.

State maps

Unlike other data presented in this report, the State maps are based on final data instead of provisional data. The age-adjusted death rates used to produce the State maps were computed by using a 3-year total number of deaths for 1989–91 and the 1990 census population enumerated as of April 1, 1990 (5). Assigning the States into the given categories on the maps was carried out in two steps: a) determining whether the State age-adjusted death rate differed significantly from the corresponding U.S. rate at the 0.05 level of significance; b) then grouping the State rates found to be significantly different from the U.S. rate into the four categories: 10 highest State rates of those significantly greater than the U.S. rate, remaining State rates significantly greater than the U.S. rate, 10 lowest State rates of those significantly lower than the U.S. rate, and remaining State rates significantly lower than the U.S. rate. Age-adjusted death rates and the corresponding 95-percent confidence intervals are shown in the tables. The symbols † and †† in the tables are used to denote State rates that differ significantly from the U.S. rate at the 0.05 and 0.01 levels of significance, respectively. Different procedures were used to determine tests of statistical significance and confidence intervals, depending on the number of deaths.

For 50 deaths or more, the standard normal Z statistic was used to perform the significance test:

$$Z = (R'_s - R'_{us}) / \sqrt{S^2(R'_s) + S^2(R'_{us})}$$

where

R'_s = age-adjusted rate for

1989–91 for the given State per 100,000 U.S. standard million population

R'_{us} = age-adjusted rate for 1989–91 for the United States per 100,000 U.S. standard million population

$S^2(R'_s)$ = estimated variance of the age-adjusted death rate for 1989–91 for the State

$S^2(R'_{us})$ = estimated variance of the age-adjusted death rate for 1989–91 for the United States

The variance of the age-adjusted death rate was computed in terms of the variances of age-specific death rates (10) under the assumption that the age-specific death rates are binomial proportions (11). The 95-percent confidence limits were estimated as follows:

$$\text{Lower limit} = R'_s - 1.96 \cdot S(R'_s)$$

and

$$\text{Upper limit} = R'_s + 1.96 \cdot S(R'_s)$$

For 1–49 deaths the lower and upper 95-percent confidence limits were estimated as described elsewhere (12). The difference between the State and U.S. age-adjusted rates was determined to be statistically significant at the 0.05 or 0.01 level if the rates' respective 95-percent or 99-percent confidence limits did not overlap.

For zero deaths, the following test statistic (λ) was used to perform the significance test:

$$\lambda = \left[\sum_{x=1}^n M_{x(us)} \cdot P_{x(s)} \right] / 100,000$$

where

$M_{x(us)}$ = age-specific death rate per 100,000 population in the x^{th} age group for the United States

$P_{x(s)}$ = population in the x^{th} age group for the given State

n = number of age groups = 11.

The difference between the State and U.S. age-adjusted rates was determined to be statistically significant at the 0.05 level

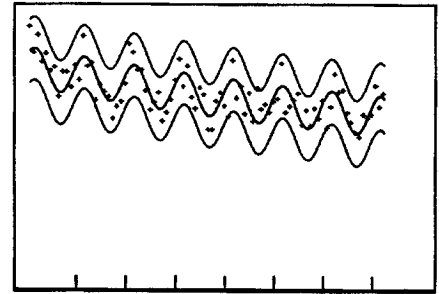
if $3.00 \leq \lambda < 4.61$. The difference between the State and U.S. age-adjusted rates was determined to be statistically significant at 0.01 level if $\lambda \geq 4.61$ (13). For zero deaths, confidence limits for the age-adjusted death rates are not applicable.

References

- Centers for Disease Control and Prevention. Morbidity and mortality weekly report; vol 43 no 10. Washington: Public Health Service. 1994.
- U.S. Department of Health and Human Services. *Healthy People 2000: National health promotion and disease prevention objectives*. Washington: Public Health Service. 1991.
- Feinleib M, Zarate AO, eds. *Reconsidering age adjustment procedures: Workshop proceedings*. National Center for Health Statistics. *Vital Health Stat* 4(29). 1992.
- Grove RD, Hetzel AM. *Vital statistics rates in the United States, 1940–60*. Public Health Service. Washington: National Center for Health Statistics. 1968.
- U.S. Bureau of the Census. Unpublished data from the 1990 census consistent with State population estimates by age and sex: 1980 to 1992; series P-25, no 1106. U.S. Government Printing Office, 1993.
- Ostle B. *Statistics in research*. 2d ed. Ames, Iowa: The Iowa State University Press. 159–221. 1963.
- Lui KJ, Kendal AP. Impact of influenza epidemics on mortality in the United States from October 1972 to May 1985. *Am J Public Health* 77(6):712–6. 1987.
- Serfling RE. Methods for current statistical analysis of excess pneumonia-influenza deaths. *Public Health Rep* 78(6):494–506. 1963.
- Shumway RH. *Applied statistical time series analysis*. Englewood Cliffs, New Jersey: Prentice-Hall 1988.
- Chiang CL. Standard error of the age-adjusted death rate. *Vital statistics-Special reports*. 47(9). National Office of Vital Statistics. Washington: Public Health Service. 1961.
- Seal HL. Mortality data and the binomial probability law. *Skand. Actuar*. 33:188–216. 1949.
- Haenszel W, Loveland DB, Sirken MG. Lung cancer mortality as related to residence and smoking histories. I. White males. *JNCI* 28:947–1001. 1962.
- Louis TA. Confidence intervals for a binomial parameter after observing no successes. *The American Statistician* 35(3):154. 1981.

Mortality Surveillance System topics

<i>MVSR issue</i>	<i>Cause-of-death</i>	<i>Healthy People 2000 Objective Number</i>
Vol. 42 No. 5	Diseases of heart	1.1 (2.1, 3.1, 15.1)
Vol. 42 No. 6	Malignant neoplasms including neoplasms of lymphatic and hematopoietic tissues	2.2 (16.1)
Vol. 42 No. 7	Malignant neoplasms of trachea, bronchus, and lung	3.2 (16.2)
Vol. 42 No. 8	Malignant neoplasm of prostate, Malignant neoplasm of breast	(¹), 16.3
Vol. 42 No. 9	Motor vehicle accidents	9.3
Vol. 42 No. 10	Suicide	6.1 (7.2)
Vol. 42 No. 11	Accidents and adverse effects, Homicide and legal intervention	9.1, 7.1 (²)
Vol. 42 No. 12	Infant mortality, Neonatal mortality, Postneonatal mortality, and Sudden infant death syndrome	14.1 (³)
Vol. 43 No. 1	Human immunodeficiency virus infection	(⁴)
Vol. 43 No. 2	Cerebrovascular diseases	15.2
Vol. 43 No. 3	Chronic obstructive pulmonary diseases and allied conditions	3.3
Vol. 43 No. 4	Diabetes mellitus	17.9



¹No *Healthy People 2000* objective addresses mortality from Malignant neoplasm of prostate.
²No *Healthy People 2000* objective addresses mortality from Legal intervention.
³No *Healthy People 2000* objective addresses mortality from Sudden infant death syndrome.
⁴No *Healthy People 2000* objective addresses mortality from this cause. See Chapter 18 for objectives related to Human immunodeficiency virus infection.

NOTE: The cause-of-death categories used in *Healthy People 2000* objective(s) may differ from those used in NCHS Mortality Tabulation Lists.

Suggested citation

National Center for Health Statistics. Births, marriages, divorces, and deaths for April 1994. Monthly vital statistics report; vol 43 no 4. Hyattsville, Maryland: Public Health Service. 1994.

Copyright information

All material appearing in this report is in the public domain and may be reproduced or copied without permission; citation as to source, however, is appreciated.

National Center for Health Statistics

Director
 Manning Feinleib, M.D., Dr. P.H.
 Deputy Director
 Jack R. Anderson

U.S. DEPARTMENT OF HEALTH AND HUMAN SERVICES
 Public Health Service
 Centers for Disease Control and Prevention
 National Center for Health Statistics
 6525 Belcrest Road
 Hyattsville, Maryland 20782

FIRST CLASS MAIL
 POSTAGE & FEES PAID
 PHS/NCHS
 PERMIT NO. G-281

OFFICIAL BUSINESS
 PENALTY FOR PRIVATE USE, \$300

To receive this publication regularly, contact the National Center for Health Statistics by calling 301-436-8500

DHHS Publication No. (PHS) 95-1120
 4-1062 (10/94)